

# National Standards Commission



## Certificate of Approval

**No 6/18/27**

Issued under Regulation 9  
of the  
National Measurement (Patterns of Instruments) Regulations

This is to certify that an approval for use for trade has been granted in respect of the

Colonial Scale Model CSC-TS Overhead Weighing Instrument

submitted by Colonial Scale Co. Pty Ltd  
16-18 First Avenue  
Sunshine VIC 3020.

Signed and sealed by a person authorised under Regulation 9 of the National Measurement (Patterns of Instruments) Regulations to exercise the powers and functions of the Commission under this Regulation.

A handwritten signature in black ink, appearing to read 'J. Birch'.

### CONDITIONS OF APPROVAL

This approval is subject to review on or after 1/4/95.

This approval expires in respect of new instruments on 1/4/96.

Instruments purporting to comply with this approval shall be marked NSC No 6/18/27 and only by persons authorised by the submittor.

It is the submittor's responsibility to ensure that all instruments marked with this approval number are constructed as described in the drawings and specifications lodged with the Commission and with the relevant Certificate of Approval and Technical Schedule. Failure to comply with this Condition may attract penalties under Section 19B of the National Measurement Act and may result in cancellation or withdrawal of the approval, in accordance with the Commission's Document 106.

Auxiliary devices used with this instrument shall comply with the requirements of General Supplementary Certificate No S1/0.

The values of the performance criteria (maximum number of scale intervals etc.) applicable to an instrument incorporating the pattern approved herein shall be within the limits specified herein and in any approval documentation for the other components.

The Commission reserves the right to examine any instrument or component of an instrument purporting to comply with this approval.

### DESCRIPTIVE ADVICE

**Pattern:** approved 6/3/90

- A Colonial Scale model CSC-TS self-indicating overhead weighing instrument of 600 kg maximum capacity.

**Variants:** approved 6/3/90

1. Of 1 000 kg maximum capacity.

Technical Schedule No 6/18/27 describes the pattern and variant 1.

### FILING ADVICE

The documentation for this approval comprises.

Certificate of Approval No 6/18/27 dated 21/8/90  
Technical Schedule No 6/18/27 dated 21/8/90 (incl. Test Procedure)  
Figure 1 dated 21/8/90



6/18/27  
21/8/90

## National Standards Commission

TECHNICAL SCHEDULE No 6/18/27

**Pattern:** Colonial Scale Model CSC-TS Overhead Weighing Instrument.

**Submittor:** Colonial Scale Co. Pty Ltd  
16-18 First Avenue  
Sunshine VIC 3020.

### 1. Description of Pattern

A Colonial Scale model CSC-TS overhead weighing instrument of 600 kg maximum capacity and approved for use with up to 3 000 verification scale intervals.

#### 1.1 Trackwork

The model CSC trackwork (Figure 1) has the weigh-rail between 300 mm and 1 200 mm long suspended from two load cells.

#### 1.2 Load Cells

Two Kelba model KA1000-C3 load cells of 1 000 kg capacity are used as described in the documentation of NSC approval No S155.

#### 1.3 Indicator

An AND Mercury model AD-4322 digital indicator is used as described in the documentation of NSC approval No S250.

#### 1.5 Verification Mark

Provision is made for a verification mark to be applied.

## 1.5 Markings

Instruments are marked with the following data, together in one location:

Manufacturer's name or mark	
NSC approval numbers	- instrument NSC No 6/18/27
	- indicator NSC No .....
	- load cell NSC No .....
Serial number	
Accuracy class	III
Load cell serial numbers (#)	
Maximum capacity	Max ..... kg *
Minimum capacity	Min ..... kg *
Verification scale interval	e = d = ..... kg *
Maximum subtractive tare	T = - ..... kg

\* Repeated adjacent to each reading face.

# Alternatively, these may be marked adjacent to the verification mark.

## 2. Description of Variant 1

With a maximum capacity of 1 000 kg and with a verification scale interval of 0.5 kg.

### TEST PROCEDURE

Instruments should be tested in conjunction with any tests specified in the approval documentation for the indicator used, and in accordance with any relevant tests specified in the Inspector's Handbook.

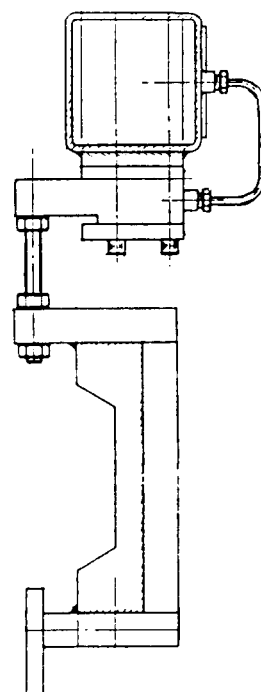
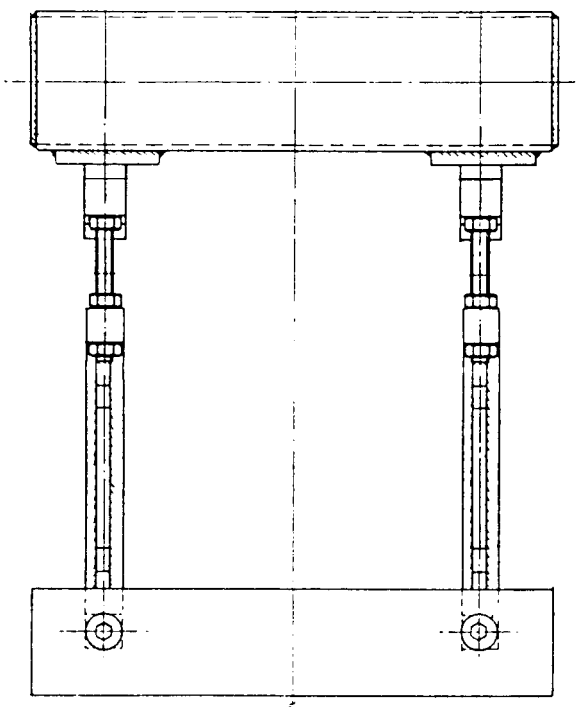
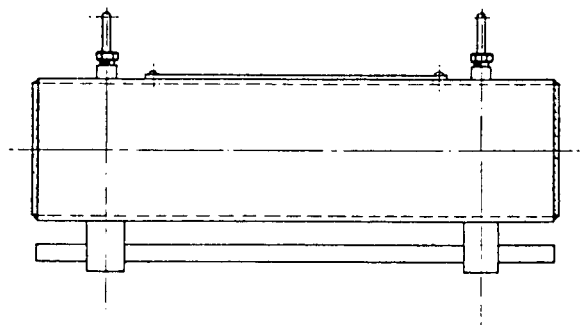
#### Maximum Permissible Errors at Verification/Certification

The maximum permissible errors for increasing and decreasing loads, expressed in terms of verification scale interval (e), with the instrument adjusted to zero within  $\pm 0.25e$  at no load, are:

- $\pm 0.5e$  for loads from 0 to  $500e$ ;
- $\pm 1.0e$  for loads over  $500e$  up to  $2\,000e$ ; and
- $\pm 1.5e$  for loads over  $2\,000e$ .

6/18/27  
21/8/90

FIGURE 6/18/27 - 1



Model CSC-TS Trackwork