



6/18/26
12/2/90

National Standards Commission

NATIONAL MEASUREMENT (PATTERNS OF INSTRUMENTS) REGULATIONS

REGULATION 9

CERTIFICATE OF APPROVAL No 6/18/26

This is to certify that an approval for use for trade has been granted in respect of the pattern of the

Queensland Weighing Machines Model ETS Overhead Weighing Instrument

— submitted by Queensland Weighing Machines Pty Ltd
Cnr Burrows and Taylor Streets
Bowen Hills QLD 4006.

Conditions of Approval

This approval is subject to review on or after 1/8/94.

This approval expires in respect of new instruments on 1/8/95.

Instruments purporting to comply with this approval shall be marked NSC No 6/18/26 and only by persons authorised by the submitter.

This approval may be withdrawn if instruments are constructed other than in accordance with the drawings and specifications lodged with the Commission.

The values of the performance criteria (maximum number of scale intervals etc.) applicable to the instrument shall be within the limits specified in this approval and in any approval documentation for the components, where they are approved separately.

Signed and sealed by a person authorised under Regulation 9 of the National Measurement (Patterns of Instruments) Regulations to exercise the powers and functions of the Commission under this Regulation.

Descriptive Advice

Pattern: approved 21/7/89

- A Queensland Weighing Machines model ETS self-indicating overhead weighing instrument of 600 kg maximum capacity.

Technical Schedule No 6/18/26 describes the pattern.

Filing Advice

The documentation for this approval comprises:

Certificate of Approval No 6/18/26 dated 12/2/90
Technical Schedule No 6/18/26 dated 12/2/90
Test Procedure No 6/18/26 dated 12/2/90
Figures 1 and 2 dated 12/2/90



National Standards Commission

TECHNICAL SCHEDULE No 6/18/26

Pattern: Queensland Weighing Machines Model ETS Overhead Weighing Instrument.

Submitter: Queensland Weighing Machines Pty Ltd
Cnr Burrows and Taylor Streets
Bowen Hills QLD 4006.

1. Description of Pattern

A Queensland Weighing Machines model ETS overhead weighing Instrument of 600 kg maximum capacity and approved for use with up to 3000 verification scale intervals.

1.1 Trackwork

The model ETS trackwork (Figures 1 and 2) has the weigh-rail up to 1200 mm long suspended from two load cells.

1.2 Load Cells

Two Kelba model KA1000-C3 load cells of 1000 kg capacity are used as described in the documentation of NSC approval No S155.

1.3 Indicator

An AND Mercury model AD-4316 digital indicator is used as described in the documentation of NSC approval No S161.

1.4 Markings

Instruments are marked with the following data, together in one location:

Manufacturer's name or mark	
NSC approval numbers – Instrument	NSC No 6/18/26
– Indicator	NSC No.....
– load cell	NSC No.....
Serial number	
Accuracy class	III
Load cell serial numbers (#)	
Maximum capacity	Max..... kg *
Minimum capacity	Min..... kg *
Verification scale interval	e = d =..... kg *
Maximum subtractive tare	T = -..... kg

* Repeated adjacent to each reading face.

Alternatively, these may be marked adjacent to the verification mark.

1.5 Verification Mark

Provision is made for a verification mark to be applied.

TEST PROCEDURE No 6/18/26

Instruments should be tested in conjunction with any tests in the approval documents for the digital indicator, and in accordance with any relevant tests in the Inspector's Handbook.

The results should not exceed the maximum permissible errors specified in Document 118, Second Edition, October 1986.



National Standards Commission

Notification of Change

Certificate of Approval No 6/18/26

Change No 1

The following changes are made to the approval documentation for the

Queensland Weighing Machines Model ETS Overhead Weighing Instrument

submitted by Queensland Weighing Machines Pty Ltd
now of 45 Wentworth Place
Northgate QLD 4013.

A. In Certificate of Approval No 6/18/26 dated 12 February 1990, the Descriptive Advice should be amended to read, in part:

“... of **300 or** 600 kg maximum capacity.”

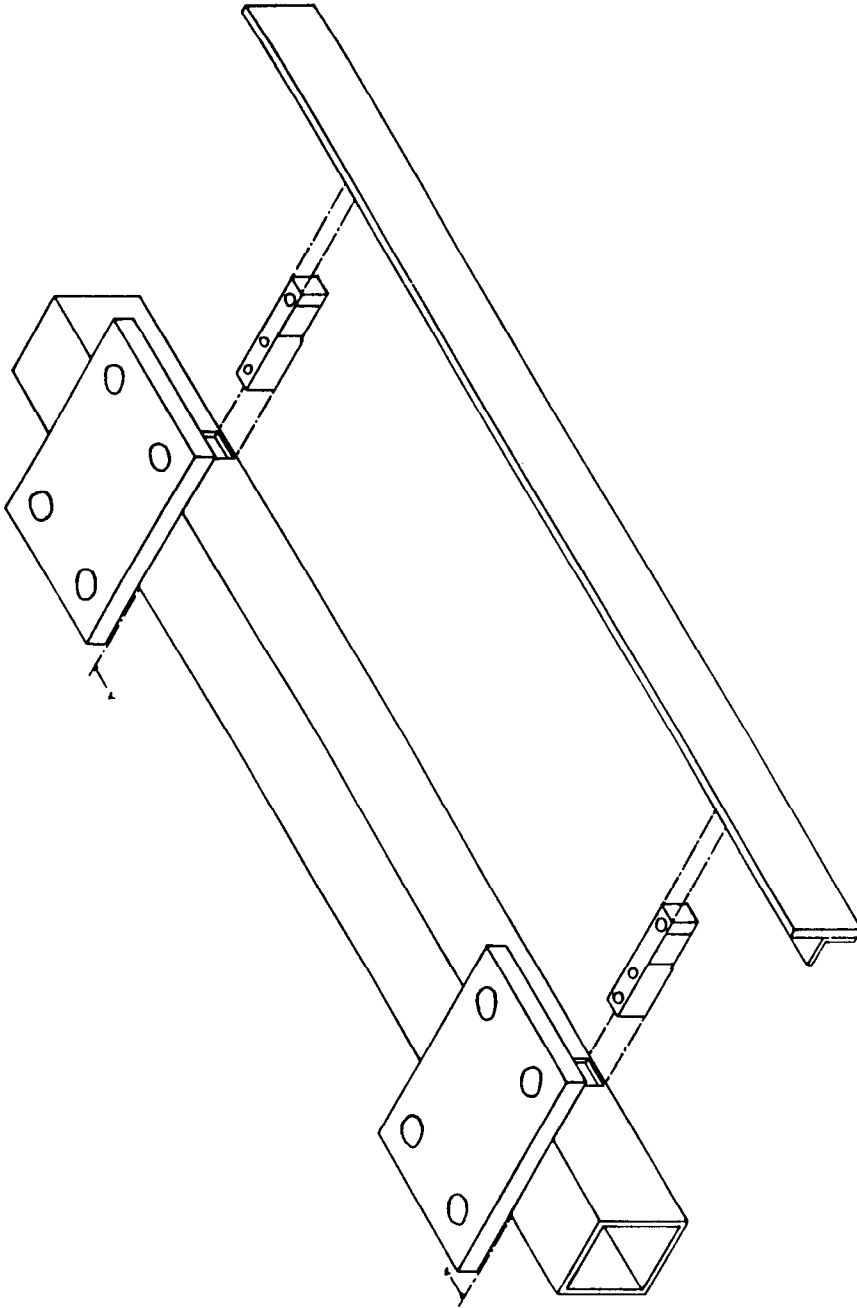
B. In Technical Schedule No 6/18/26 dated 12 February 1990, clause 1. Description of Pattern should be amended to read, in part:

“... of **300 or** 600 kg maximum capacity and ...”

NOTE: This approval expired in respect of new instruments on 1 August 1995.

Signed and sealed by a person authorised under Regulation 9 of the National Measurement (Patterns of Measuring Instruments) Regulations to exercise the powers and functions of the Commission under this Regulation.

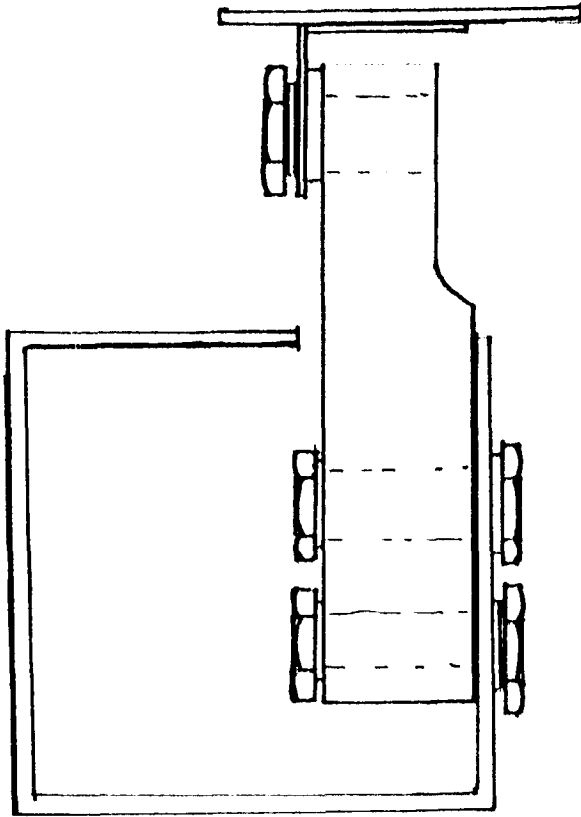
Figure 6/18/26 - 1



Model ETS Trackwork

6/18/26
12/2/90

Figure 6/18/26 - 2



Load Cell Mounting