

National Standards Commission



Certificate of Approval No 6/18/22

Issued under Regulation 9
of the
National Measurement (Patterns of Instruments) Regulations

This is to certify that an approval for use for trade has been granted in respect of the

RCM Products Model TS-1220 Overhead-track Weighing Instrument

submitted by RCM Products Pty Ltd
Industrial Sector, Potato Point Road
Bodalla NSW 2545.

Signed and sealed by a person authorised under Regulation 9 of the National Measurement (Patterns of Instruments) Regulations to exercise the powers and functions of the Commission under this Regulation.



CONDITIONS OF APPROVAL

This approval is subject to review on or after 1/4/93.
This approval expires in respect of new Instruments on 1/4/94.

Instruments purporting to comply with this approval shall be marked NSC No 6/18/22 and only by persons authorised by the submittor.

It is the submittor's responsibility to ensure that all instruments marked with this approval number are constructed as described in the drawings and specifications lodged with the Commission and with the relevant Certificate of Approval and Technical Schedule. Failure to comply with this Condition may attract penalties under Section 19B of the National Measurement Act and may result in cancellation or withdrawal of the approval, in accordance with the Commission's Document 106.

The Commission reserves the right to examine any instrument or component of an instrument purporting to comply with this approval.

Auxiliary devices used with this instrument shall comply with the requirements of General Supplementary Certificate No S1/0.

The values of the performance criteria (maximum number of scale intervals etc.) applicable to the instrument shall be within the limits specified herein and in any approval documentation for the components where they are approved separately.

DESCRIPTIVE ADVICE

Pattern: approved 7/3/88

- An RCM Products model TS-1220 self-indicating overhead-track weighing instrument of 400 kg maximum capacity.

Technical Schedule No 6/18/22 describes the pattern.

Variant: approved 27/9/89

1. Of 600 kg maximum capacity.

Technical Schedule No 6/18/22 Variation No 1 describes variant 1.

FILING ADVICE

Certificate of Approval No 6/18/22 dated 1/6/88 is superseded by this Certificate and may be destroyed. The documentation for this approval now comprises:

Certificate of Approval No 6/18/22 dated 13/4/90
Technical Schedule No 6/18/22 dated 1/6/88
Technical Schedule No 6/18/22 Variation No 1 dated 13/4/90
Test Procedure No 6/18/22 dated 1/6/88
Figures 1 to 3 dated 1/6/88



6/18/22

1/6/88

NATIONAL STANDARDS COMMISSION

NATIONAL MEASUREMENT (PATTERNS OF INSTRUMENTS) REGULATIONS

REGULATION 9

CERTIFICATE OF APPROVAL No 6/18/22

This is to certify that an approval for use for trade has been granted in respect of the pattern of the

RCM Products Model TS-1220 Overhead-track Weighing Instrument

submitted by RCM Products Pty Ltd
Industrial Sector, Potato Point Road
Bodalla NSW 2545.

CONDITIONS OF APPROVAL

This approval is subject to review on or after 1/4/93.

This approval expires in respect of new instruments on 1/4/94.

Instruments purporting to comply with this approval shall be marked NSC No 6/18/22.

This approval may be withdrawn if instruments are constructed other than in accordance with the drawings and specifications lodged with the Commission.

The values of the performance criteria (maximum number of scale intervals etc.) applicable to the instrument shall be within the limits specified in this approval or in any approval documentation for the components, where they are approved separately.

Signed

Executive Director

Descriptive Advice

Pattern: approved 7/3/88

- RCM Products model TS-1220 self-indicating overhead-track weighing instrument of 400 kg maximum capacity.

Technical Schedule No 6/18/22 describes the pattern.

Filing Advice

The documentation for this approval comprises:

Certificate of Approval No 6/18/22 dated 1/6/88
Technical Schedule No 6/18/22 dated 1/6/88
Test Procedure No 6/18/22 dated 1/6/88
Figures 1 to 3 dated 1/6/88



6/18/22
1/6/88

NATIONAL STANDARDS COMMISSION

TECHNICAL SCHEDULE No 6/18/22

Pattern: RCM Products Model TS-1220 Overhead-track Weighing Instrument.

Submittor: RCM Products Pty Ltd
Industrial Sector, Potato Point Road
Bodalla NSW 2545.

1. Description of Pattern

A model TS-1220 overhead-track weighing instrument of 400 kg maximum capacity.

1.1 Trackwork

The model TS-1220 trackwork (Figures 1 and 2) is approved for use with a maximum of 2000 verification scale intervals, has the weigh-rail up to 1220 mm long suspended from two load cells and has a horizontal tie rod.

1.2 Load Cells (Figure 3)

Two Precision Transducers model LS500 load cells of 500 kg capacity are used as described in the documentation of NSC approval No S224.

1.3 Indicator

A Gedge model GS1650 digital indicator is used as described in the documentation of NSC approval No S193.

1.4 Markings

Instruments are marked with the following data, together in one location:

Manufacturers name or mark	
NSC approval numbers - Instrument:	NSC No 6/18/22
Indicator:	NSC No
Load cell:	NSC No
Serial number	
Accuracy number	(III)
Load cell serial number (#)	
Maximum capacity	Max kg *
Minimum capacity	Min kg *
Verification scale interval	e = d = ... kg *
Maximum subtractive tare	T = - kg

Alternatively, this may be marked adjacent to the verification mark.

* Repeated adjacent to each reading face.

1.5 Verification Mark

Provision is made for a verification mark to be applied.



NATIONAL STANDARDS COMMISSION

6/18/22

1/6/88

TEST PROCEDURE No 6/18/22

All load applications should be in accordance with the Commission's recommended testing procedure for the elimination of rounding error, as set out in Document 104.

Where applicable, this Test Procedure should be carried out in conjunction with any tests in the approval documents for the load cell and/or for the digital indicator, and in accordance with any relevant tests in the Inspector's Handbook.

The results shall not exceed the maximum permissible errors specified in Document 118, Second Edition, October 1986.

1. Test Loads

1.1 Initial Verification

1.1.1 Test loads are to be applied to the instrument at the centre of the weigh-rail in not less than 5 approximately equal steps increasing to maximum capacity, followed by decreasing loads in not less than 5 approximately equal steps to zero load.

1.1.2 The above test should be repeated at each end of the weigh-rail.

1.2 Subsequent Verifications

1.2.1 Perform 1.1.1.

1.2.2 Sufficient testing should be undertaken to ensure that the instrument performs within the maximum permissible errors at each end of the weigh-rail.

Note: The instrument should display these loads within the applicable maximum permissible error as listed above.



National Standards Commission

TECHNICAL SCHEDULE No 6/18/22

VARIATION No 1

Pattern: RCM Products Model TS-1220 Overhead-track Weighing Instrument.

Submittor: RCM Products Pty Ltd
Industrial Sector, Potato Point Road
Bodalla NSW 2545.

1. Description of Variant 1

An RCM model TS-1220 overhead-track weighing instrument of 600 kg maximum capacity.

1.1 Trackwork

The trackwork is similar to that shown in Figures 1 and 2, but with additional supports for the weigh-rail. It is approved for use with a maximum of 3000 verification scale intervals.

1.2 Load Cells

Two Kelba model KA-1000C3 load cells of 1000 kg capacity are used as described in the documentation of NSC approval No S155.

1.3 Indicator

A Toledo model 8142 digital indicator is used as described in the documentation of NSC approval No S206.

6/18/22
5 December 1994

National Standards Commission



NOTIFICATION OF CHANGE

CERTIFICATE OF APPROVAL No 6/18/22

CHANGE No 1

The following change is made to the approval documentation for the

RCM Model TS-1220 Overhead-track Weighing Instrument

submitted by RCM Products Pty Ltd
23 Potato Point Road
Bodalla NSW 2545.

In Certificate of Approval No 6/18/22 dated 13 April 1990, the Condition of Approval referring to the expiry of the approval should be amended to now read:

"This approval expires in respect of new instruments on 1 June 1995."

Signed and sealed by a person authorised under Regulation 9 of the National Measurement (Patterns of Measuring Instruments) Regulations to exercise the powers and functions of the Commission under this Regulation.



National Standards Commission



NOTIFICATION OF CHANGE
CERTIFICATE OF APPROVAL No 6/18/22
CHANGE No 2

The following change is made to the approval documentation for the

RCM Model TS-1220 Overhead-track Weighing Instrument

submitted by RCM Products Pty Ltd
23 Potato Point Road
Bodalla NSW 2545.

In Certificate of Approval No 6/18/22 dated 13 April 1990, the Condition of Approval referring to the expiry of the approval should be amended to now read:

"This approval expires in respect of new instruments on 1 August 1995."

NOTE: This was previously amended by Notification of Change No 1 dated 5 December 1994.

Signed and sealed by a person authorised under Regulation 9 of the National Measurement (Patterns of Measuring Instruments) Regulations to exercise the powers and functions of the Commission under this Regulation.



National Standards Commission



NOTIFICATION OF CHANGE
CERTIFICATE OF APPROVAL No 6/18/22
CHANGE No 3

The following change is made to the approval documentation for the

RCM Model TS-1220 Overhead-track Weighing Instrument

submitted by RCM Products Pty Ltd
23 Potato Point Road
Bodalla NSW 2545.

In Certificate of Approval No 6/18/22 dated 13 April 1990, the Condition of Approval referring to the expiry of the approval should be amended to now read:

"This approval expires in respect of new instruments on 1 November 1995."

NOTE: This was previously amended by Notification of Change No 2 dated 19 June 1995.

Signed and sealed by a person authorised under Regulation 9 of the National Measurement (Patterns of Measuring Instruments) Regulations to exercise the powers and functions of the Commission under this Regulation.

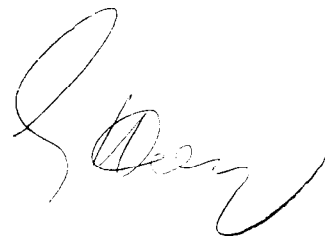
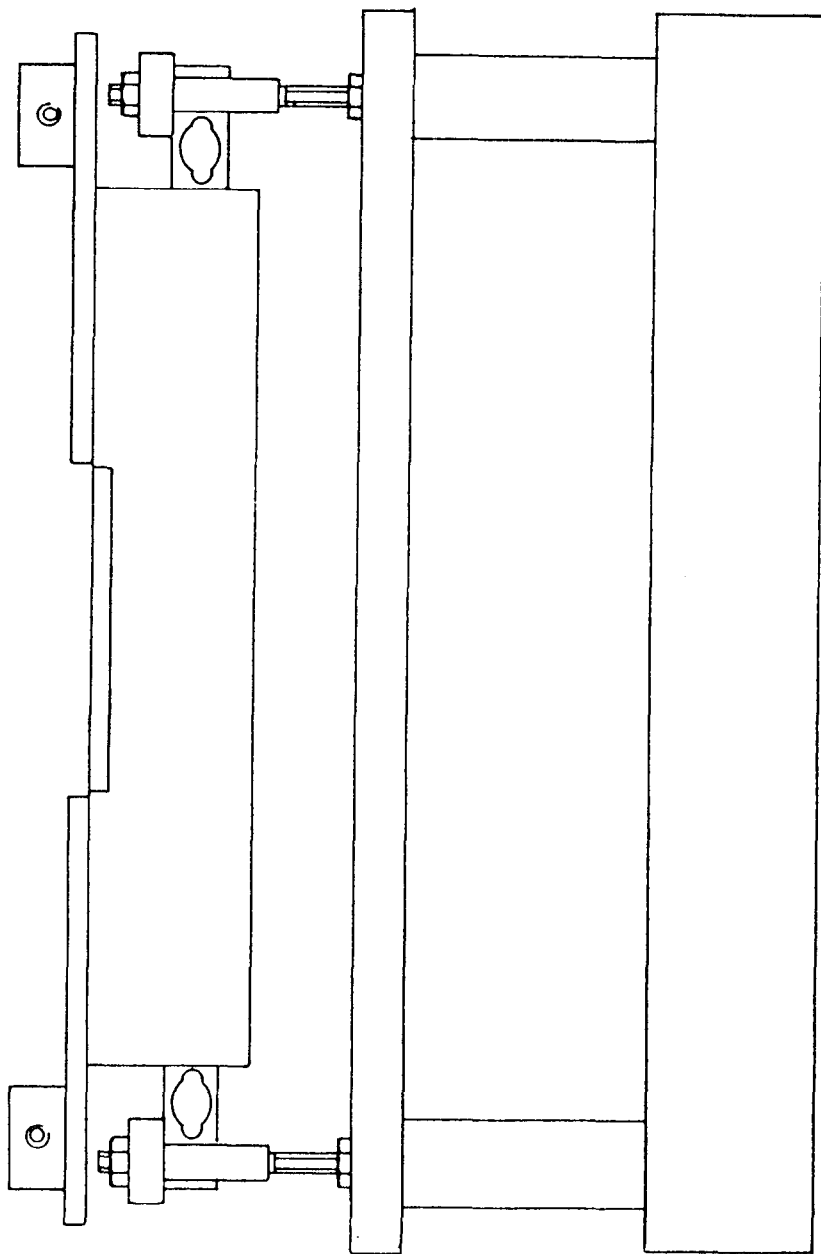


FIGURE 6/18/22 - 1



RCM Model1 TS-1220 Overhead Trackwork

FIGURE 6/18/22 - 2

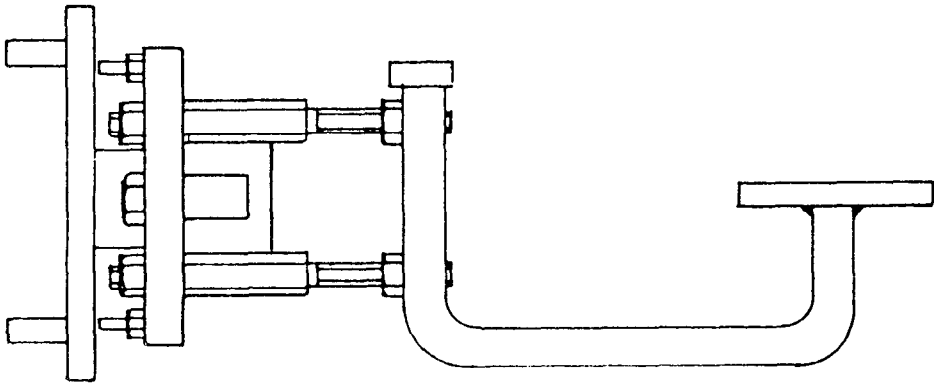
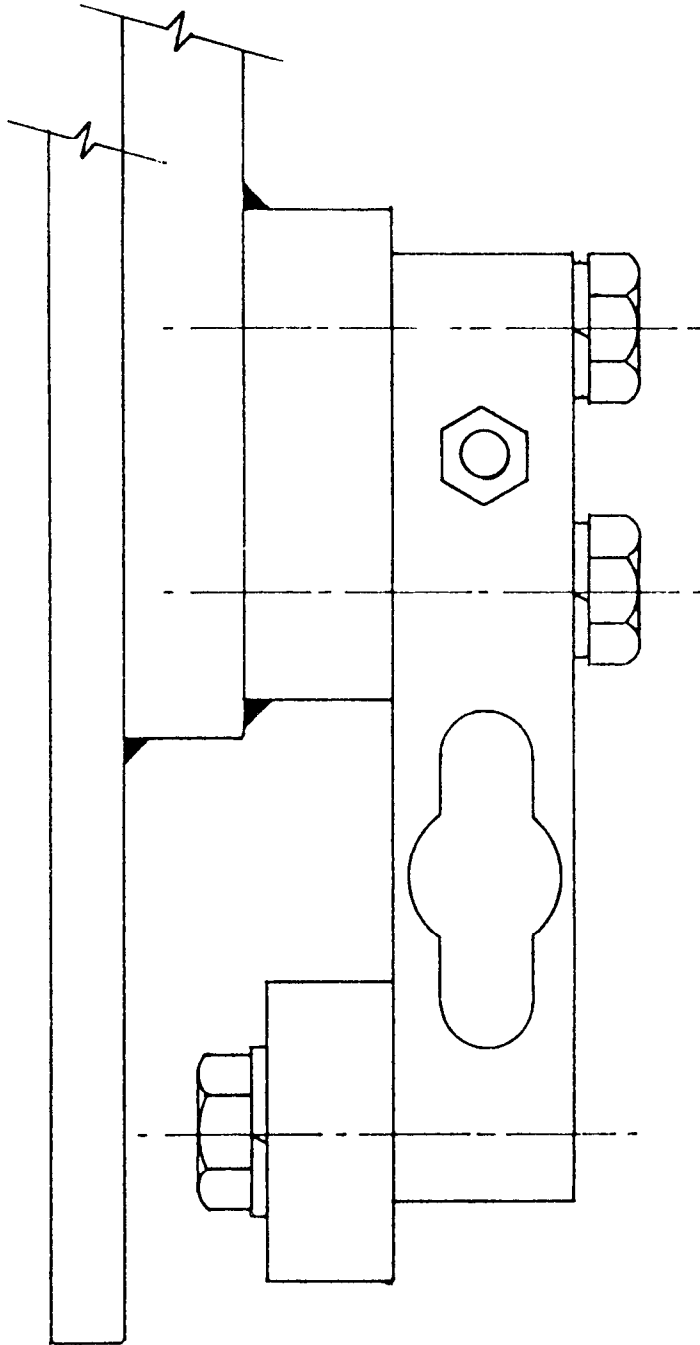


FIGURE 6/18/22 - 3



Showing Load Cell Mounting