



6/18/19  
5/6/87

## NATIONAL STANDARDS COMMISSION

### NATIONAL MEASUREMENT (PATTERNS OF INSTRUMENTS) REGULATIONS

#### REGULATION 9

#### CERTIFICATE OF APPROVAL No 6/18/19

This is to certify that an approval for use for trade has been granted in respect of the pattern and variants of the

Teraoka Model DS-260 Overhead-track Weighing Instrument

submitted by J W Wedderburn & Sons Pty Ltd  
90 Parramatta Road  
Summer Hill NSW 2130.

#### CONDITIONS OF APPROVAL

This approval is subject to review on or after 1/10/90.  
This approval expires in respect of new instruments on 1/10/91.

Instruments purporting to comply with this approval shall be marked NSC No 6/18/19.

This approval may be withdrawn if instruments are constructed other than in accordance with the drawings and specifications lodged with the Commission.

Auxiliary devices used with this instrument shall comply with the requirements of General Supplementary Certificates Nos S1/0 and/or S2/0, as appropriate.

The load cells shall be subject to regular certification by the Commission.

Signed

Executive Director

#### Descriptive Advice

Pattern: approved 16/9/85

- An overhead-track weighing instrument of 300 kg maximum capacity with a weigh rail up to 300 mm long.

Variant: approved 16/9/85

1. Of 600 kg capacity.

Technical Schedule No 6/18/19 describes the pattern and variant 1.

...../2

6/18/19  
5/6/87

Certificate of Approval No 6/18/19

Page 2

Variant:            approved 12/2/87

2.    With a weigh rail up to 1220 mm long.

Technical Schedule No 6/18/19 Variation No 1 describes variant 2.

Filing Advice

Certificate of Approval No 6/18/19 dated 6/3/86 is superseded by this Certificate and may be destroyed. The documentation for this approval now comprises:

Certificate of Approval No 6/18/19 dated 5/6/87  
Technical Schedule No 6/18/19 dated 6/3/86  
Technical Schedule No 6/18/19 Variation No 1 dated 5/6/87  
Test Procedure No 6/18/19 dated 6/3/86  
Figures 1 to 4 dated 6/3/86  
Figure 5 dated 5/6/87



# NATIONAL STANDARDS COMMISSION

## TECHNICAL SCHEDULE No 6/18/19

Pattern: Teraoka Model DS-260 Overhead-track Weighing Instrument

Submittor: J W Wedderburn & Sons Pty Ltd  
90 Parramatta Road  
Summer Hill NSW 2130

### 1. Description of Pattern

A model DS-260 self-indicating overhead-track weighing instrument (Figure 1) of 300 kg maximum capacity with a weigh rail up to 300 mm long and approved for use with up to 3000 verification scale intervals.

#### 1.1 Basework

The model DS-260 basework has the weigh rail suspended from the load cell by a vertical load support beam (Figures 2 and 3).

#### 1.2 Indicator

The Teraoka model DS-260 digital indicator (Figure 4) is described in the documentation of NSC approval No S166 and may be marked as specified in that approval or alternatively as specified in 1.4.1 below, when fitted in this instrument.

#### 1.3 Load Cell

The Teraoka Seiko RW-300 load cell of 300 kg capacity is described in the documentation of NSC approval No S167 and may be marked as specified in that approval or alternatively as specified in 1.4.2 below, when fitted in this instrument.

#### 1.4 Markings

##### 1.4.1

The instrument is marked with the following data, together in one location:

Manufacturer's name or mark	
Serial number	
NSC approval number	NSC No 6/18/19
Accuracy class	(III)
Maximum capacity	Max ..... kg *
Minimum capacity	Min ..... kg *
Verification scale interval	e = d = ... kg *
Maximum subtractive tare	T = - ..... kg

\* These markings are repeated adjacent to each reading face, if not already in that vicinity.

1.4.2

The following is the minimum data required to be marked on the load cell:

Manufacturer's name or mark  
Model number  
Serial number  
Maximum capacity

Load cell serial numbers may alternatively be marked on a nameplate attached to the indicator or marked on metal tags attached to the indicator via a lead and wire seal.

1.5 Verification Provision

Provision is made for a verification mark to be applied.

2. Description of Variant 1

Of 600 kg maximum capacity using a model RW-600 load cell of 600 kg capacity.

TEST PROCEDURE No 6/18/19

Where applicable, this Test Procedure should be carried out in conjunction with any tests specified in the approval documentation for the load cell and/or the indicator.

All load applications to the instrument should be in accordance with the Commission's recommended testing procedure for the elimination of rounding error as set out in Document 104.

The maximum permissible errors are:

- ± 0.5e for loads between 0 and 500e;
- ± 1.0e for loads between 501e and 2000e; and
- ± 1.5e for loads above 2000e.

1. Zero Range

The maximum range of operation of the zero setting device should not exceed 4% of the maximum capacity (± 2% approximately).

2. Load Test

Test loads are to be applied to the instrument at the centre of the weigh rail in not less than 5 approximately equal steps increasing to maximum capacity, followed by decreasing loads in not less than 5 approximately equal steps to zero load.

This test should be repeated at each end of the weigh rail.

The instrument should display these loads within the applicable maximum permissible error as listed above.



# NATIONAL STANDARDS COMMISSION

6/18/19  
5/6/87

## TECHNICAL SCHEDULE No 6/18/19

### VARIATION No 1

Pattern: Teraoka Model DS-260 Overhead-track Weighing Instrument

Submittor: J W Wedderburn & Sons Pty Ltd  
90 Parramatta Road  
Summer Hill NSW 2130

#### 1. Description of Variant 2

A model DS-260 self-indicating overhead-track weighing instrument with a weigh rail up to 1220 mm long (Figure 5).

The weigh rail is supported at each end by a Teraoka Seiko RW series load cell.

Baseworks are of either 300 kg or 600 kg capacity, and use either model RW-300 (300 kg) or model RW-600 (600 kg) load cells respectively.

# National Standards Commission



## NOTIFICATION OF CHANGE

### CERTIFICATE OF APPROVAL No 6/18/19

#### CHANGE No 1

The following changes are made to the approval documentation for the

Teraoka Model DS-260 Overhead-track Weighing Instrument

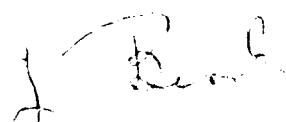
submitted by J W Wedderburn & Sons Pty Ltd  
(now W W Wedderburn Pty Ltd)  
90 Parramatta Road  
Summer Hill NSW 2130.

In Certificate of Approval No 6/18/19 dated 5/6/87, the Condition of Approval referring to the expiry of the approval should be amended to now read:

"This approval expires in respect of new instruments on 1/7/93."

NOTE: The Commission does not allow the load cells specified in overhead weighing instrument approvals to be replaced by any other cell even if that replacement cell has a Supplementary Certificate of Approval. Only the Teraoka Seiko model RW-300 or RW-600 load cells shall be used in the model DS-260 overhead weighing instruments. (The Supplementary approval (NSC No S167) for the RW series load cells has expired, however this does not effect their use in these instruments.)

Signed and sealed by a person authorised under Regulation 9 of the National Measurement (Patterns of Instruments) Regulations to exercise the powers and functions of the Commission under this Regulation.



## National Standards Commission



### NOTIFICATION OF CHANGE

CERTIFICATE OF APPROVAL No 6/18/19

CHANGE No 2

The following changes are made to the approval documentation for the

Teraoka Model DS-260 Overhead-track Weighing Instrument

submitted by J W Wedderburn & Sons Pty Ltd  
(now W W Wedderburn Pty Ltd)  
90 Parramatta Road  
Summer Hill NSW 2130.

In Certificate of Approval No 6/18/19 dated 5/6/87, the Condition of Approval referring to the expiry of the approval should be amended to now read:

"This approval expires in respect of new instruments on 31/12/93."

NOTE: The Commission does not allow the load cells specified in overhead weighing instrument approvals to be replaced by any other cell even if that replacement cell has a Supplementary Certificate of Approval. Only the Teraoka Seiko model RW-300 or RW-600 load cells shall be used in the model DS-260 overhead weighing instruments. (The Supplementary approval (NSC No S167) for the RW series load cells has expired, however this does not effect their use in these instruments.)

Signed and sealed by a person authorised under Regulation 9 of the National Measurement (Patterns of Instruments) Regulations to exercise the powers and functions of the Commission under this Regulation.



# National Standards Commission



## NOTIFICATION OF CHANGE

CERTIFICATE OF APPROVAL No 6/18/19

CHANGE No 3

The following change is made to the approval documentation for the

Teraoka Model DS-260 Overhead-track Weighing Instrument

submitted by W W Wedderburn Pty Ltd  
90 Parramatta Road  
Summer Hill NSW 2130.

In Certificate of Approval No 6/18/19 dated 5/6/87, the Condition of Approval referring to the expiry of the approval (previously amended by Notification of Change No 2 dated 23/7/93) should be amended to now read:

"This approval expires in respect of new instruments on 30/6/94."

NOTE: The Commission does not allow the load cells specified in overhead weighing instrument approvals to be replaced by any other cell even if that replacement cell has a Supplementary Certificate of Approval. Only the Teraoka Seiko model RW-300 or RW-600 load cells shall be used in model DS-260 overhead weighing instruments. (The Supplementary approval (NSC No S167) for the RW series load cells has expired, however this does not effect their use in these instruments.)

Signed and sealed by a person authorised under Regulation 9 of the National Measurement (Patterns of Measuring Instruments) Regulations to exercise the powers and functions of the Commission under this Regulation.

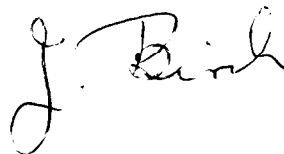
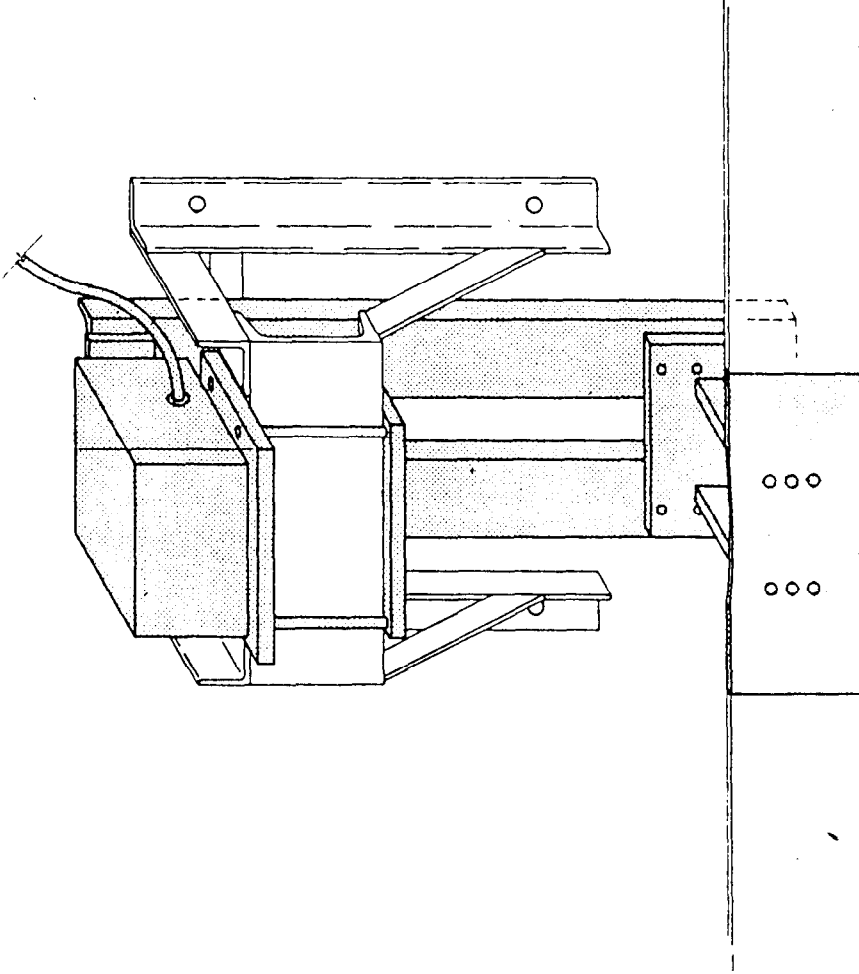


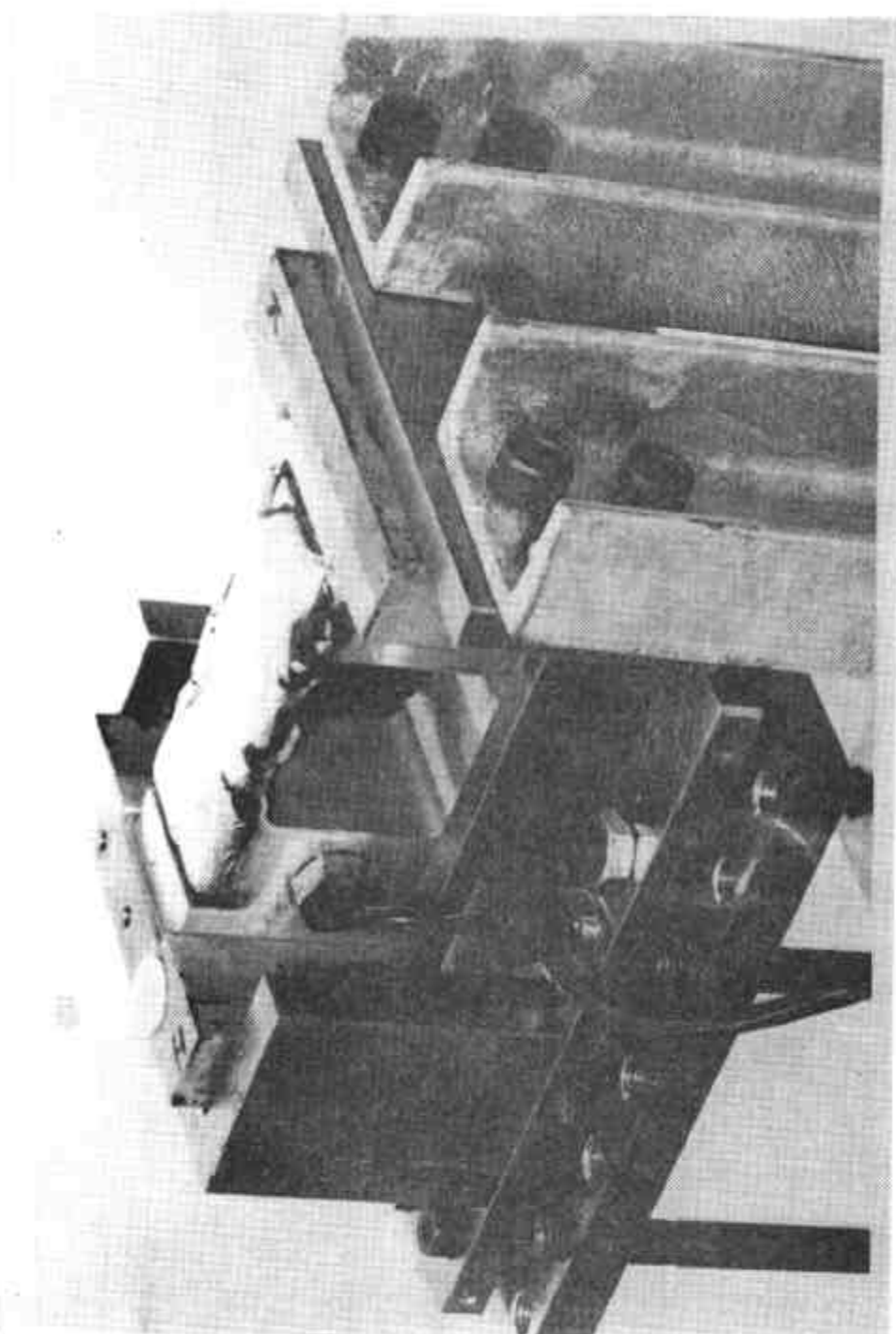
FIGURE 6/18/19 - 1



EXISTING RAIL.

Terooka DS-260 Overhead-track Instrument

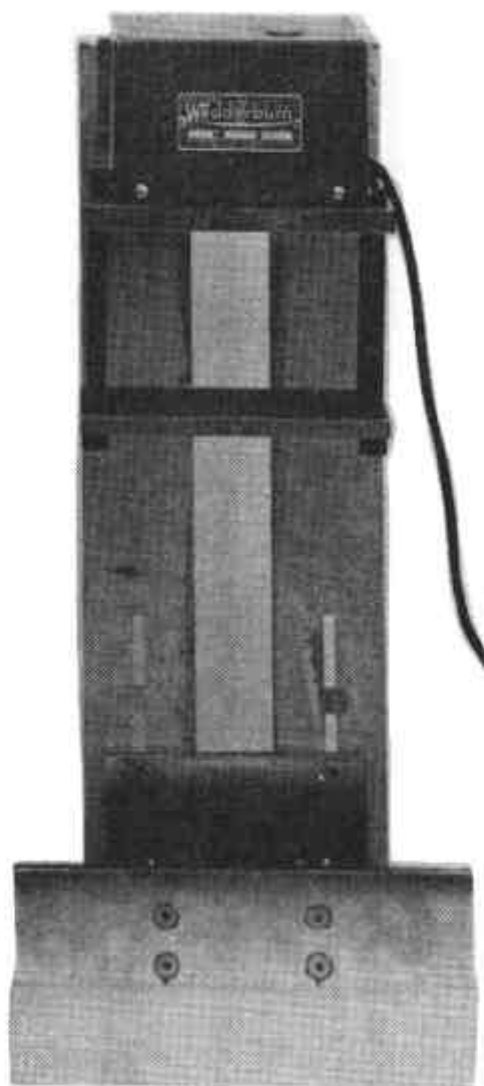
FIGURE 6/18/19 - 2



Load Cell Mounting

6/18/19  
6/3/86

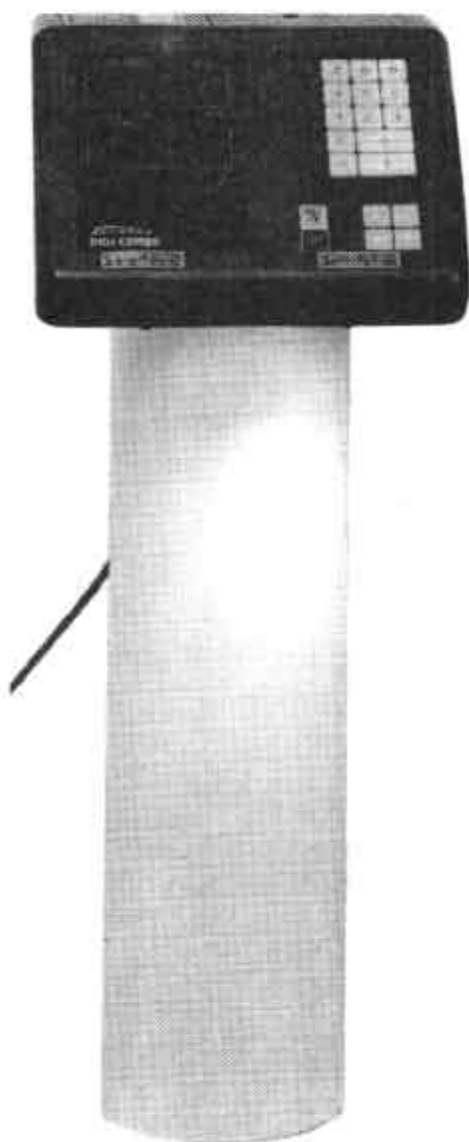
FIGURE 6/18/19 - 3



Model DS-260 Basework

6/18/19  
6/3/86

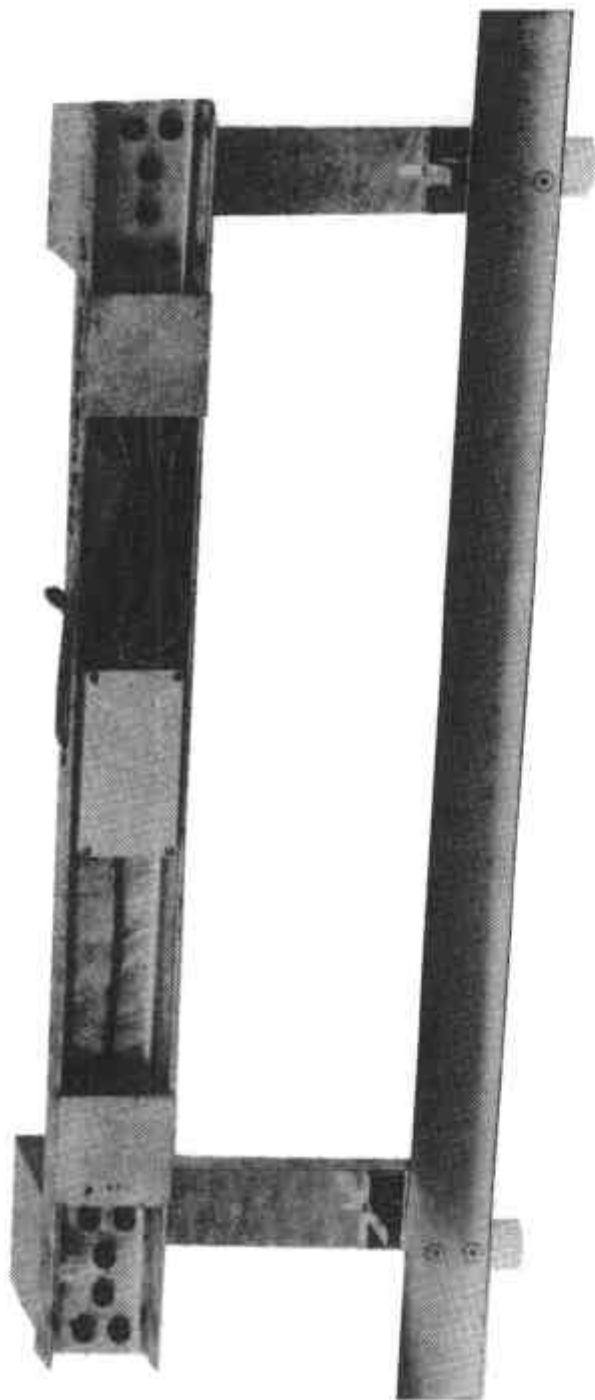
FIGURE 6/18/19 - 4



Model DS-260 Indicator

6/18/19  
5/6/87

FIGURE 6/18/19 - 5



With 1220 mm Weigh Roll