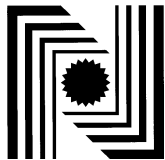
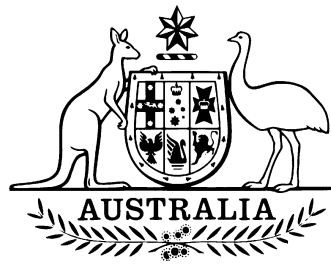


6/18/17B  
28 November 2002



## National Standards Commission

12 Lyonpark Road, North Ryde NSW

### Cancellation

### Certificate of Approval

**No 6/18/17B**

Issued under Regulation 60  
of the  
National Measurement Regulations 1999

This is to certify that the approval for use for trade granted in respect of the

A & D Mercury Model OHT-600 Overhead-track Weighing Instrument

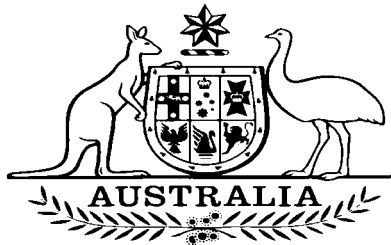
submitted by A & D Mercury Pty Ltd  
32 Dew Street  
Thebarton SA 5031

has been cancelled in respect of new instruments as from 1 December 2002.

Signed by a person authorised under Regulation 60  
of the National Measurement Regulations 1999 to  
exercise the powers and functions of the Commission  
under this Regulation.



## National Standards Commission



### Certificate of Approval

**No 6/18/17B**

Issued under Regulation 9  
of the  
National Measurement (Patterns of Measuring Instruments) Regulations

This is to certify that an approval for use for trade has been granted in respect of the

A & D Mercury Model OHT-600 Overhead-track Weighing Instrument

submitted by A & D Mercury Pty Ltd  
32 Dew Street  
Thebarton SA 5031.

**NOTE:** This Certificate relates to the suitability of the pattern of the instrument for use for trade only in respect of its metrological characteristics. This Certificate does not constitute or imply any guarantee of compliance by the manufacturer or any other person with any requirements regarding safety.

#### CONDITIONS OF APPROVAL

This approval becomes subject to review on 1 July 2002, and then every 5 years thereafter.

Instruments purporting to comply with this approval shall be marked NSC No 6/18/17B and only by persons authorised by the submitter.

Auxiliary devices used with this instrument shall comply with the requirements of General Supplementary Certificate No S1/0/A.

It is the submittor's responsibility to ensure that all instruments marked with this approval number are constructed as described in the documentation lodged with the Commission and with the relevant Certificate of Approval and Technical Schedule. Failure to comply with this Condition may attract penalties under Section 19B of the National Measurement Act and may result in cancellation or withdrawal of the approval, in accordance with the Commission's Document 106.

The Commission reserves the right to examine any instrument or component of an instrument purporting to comply with this approval.

### DESCRIPTIVE ADVICE

**Pattern:** approved 26 June 1997

- An A & D Mercury model OHT-600 overhead-track weighing instrument of 600 kg maximum capacity.

Technical Schedule No 6/18/17B describes the pattern.

**Variation:** approved 15 October 1997

1. With 'check stops' fitted to limit movement.

Technical Schedule No 6/18/17B Variation No 1 describes variation 1.

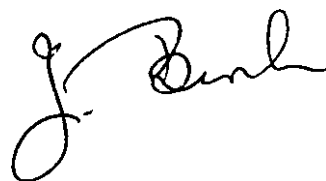
### FILING ADVICE

Certificate of Approval No 6/18/17B dated 21 August 1997 is superseded by this Certificate and may be destroyed. The documentation for this approval now comprises:

Certificate of Approval No 6/18/17B dated 24 December 1997  
Technical Schedule No 6/18/17B dated 21 August 1997 (incl. Test  
Procedure)

Technical Schedule No 6/18/17B Variation No 1 dated 24 December 1997  
Figure 1 dated 21 August 1997  
Figure 2 dated 24 December 1997

Signed and sealed by a person authorised under Regulation 9 of the National Measurement (Patterns of Measuring Instruments) Regulations to exercise the powers and functions of the Commission under this Regulation.



## TECHNICAL SCHEDULE No 6/18/17B

**Pattern:** A & D Mercury Model OHT-600 Overhead-track Weighing Instrument.

**Submitter:** A & D Mercury Pty Ltd  
32 Dew Street  
Thebarton SA 5031.

### **1. Description of Pattern**

An A & D Mercury model OHT-600 self-indicating overhead-track weighing instrument of 600 kg maximum capacity and approved for use with up to 3000 verification scale intervals.

#### **1.1 Basework**

The model OHT-600 trackwork (Figure 1) has the weigh-rail up to 1200 mm long suspended from two load cells.

#### **1.2 Load Cells**

Two Kelba model KA-1000-C3 load cells of 1000 kg capacity are used, as described in the documentation of NSC approval No S155A and mounted as shown in Figure 1.

Note that only this make, model and capacity of load cell shall be used.

#### **1.3 Indicator**

An A & D model AD-4322A MkII digital indicator is used. This is also described in the documentation of NSC approval No S250A.

#### **1.4 Verification/Certification Provision**

Provision is made for the application of a verification/certification mark.

#### **1.5 Sealing Provision**

Provision is made for the calibration adjustments in the indicator to be sealed by the method described in the approval documentation for the indicator.

## 1.6 Markings

Instruments shall carry the following markings, in the form shown at right:

Manufacturer's mark, or name written in full	
Indication of accuracy class	Ⓜ
Maximum capacity	Max ..... kg *
Minimum capacity	Min ..... kg *
Verification scale interval	e = ..... kg *
Serial number of the instrument	
Pattern approval mark for the instrument	NSC No 6/18/17B

- \* These markings shall also be repeated near each reading face if they are not already located there.

### TEST PROCEDURE

Instruments should be tested in accordance with any relevant tests specified in the Inspector's Handbook.

#### Maximum Permissible Errors at Verification/Certification

The maximum permissible errors for increasing and decreasing loads on initial verification/certification for loads,  $m$ , expressed in verification scale intervals,  $e$ , are:

- $\pm 0.5e$  for loads  $0 \leq m \leq 500$ ;
- $\pm 1.0e$  for loads  $500 < m \leq 2\,000$ ; and
- $\pm 1.5e$  for loads  $2\,000 < m \leq 10\,000$ .

TECHNICAL SCHEDULE No 6/18/17B

VARIATION No 1

**Pattern:** A & D Mercury Model OHT-600 Overhead-track Weighing Instrument.

**Submittor:** A & D Mercury Pty Ltd  
32 Dew Street  
Thebarton SA 5031.

**1. Description of Variant 1**

With 'check stops' fitted as shown in Figure 2 to limit movement of the weigh-rail.



# National Standards Commission

## Notification of Change

### Certificate of Approval No 6/18/17B

### Change No 1

The following change is made to the approval documentation for the

A & D Model OHT-600 Overhead-track Weighing Instrument

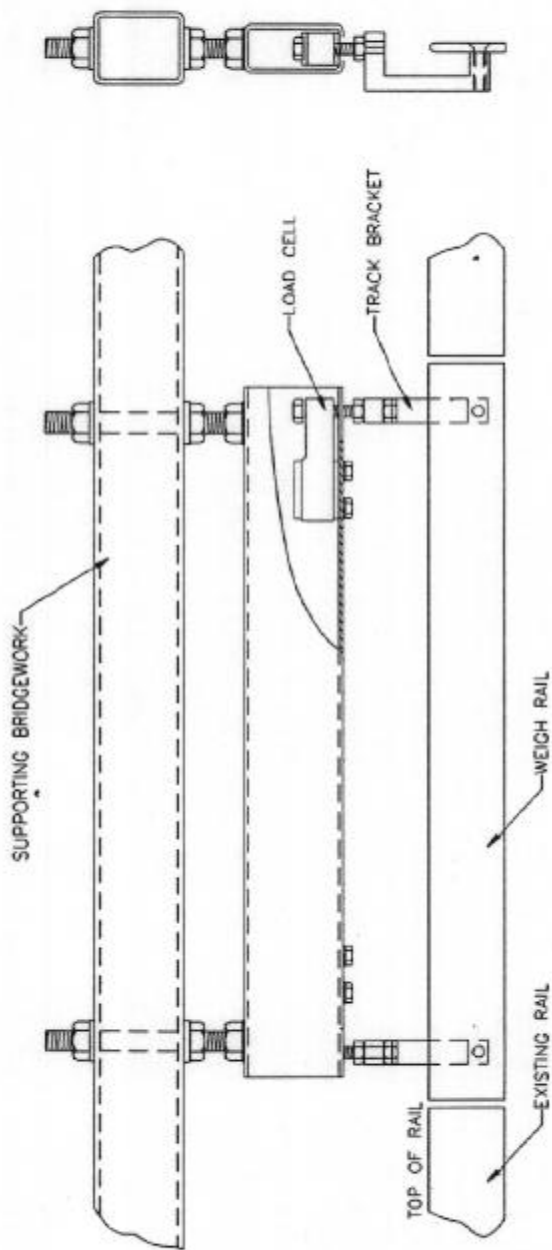
submitted by A & D Mercury Pty Ltd  
32 Dew Street  
Thebarton SA 5031.

Clause **1.2 Load Cells** in Technical Schedule No 6/18/17B dated 21 August 1997, is amended by adding the following:

“Alternatively, two Kelba model KA1000 C3 load cells of 1000 kg capacity may be used, as described in the documentation of NSC approval No S155B, and mounted as shown in Figure1.”

Signed and sealed by a person authorised under Regulation 63 of the National Measurement Regulations 1999 to exercise the powers and functions of the Commission under this Regulation.

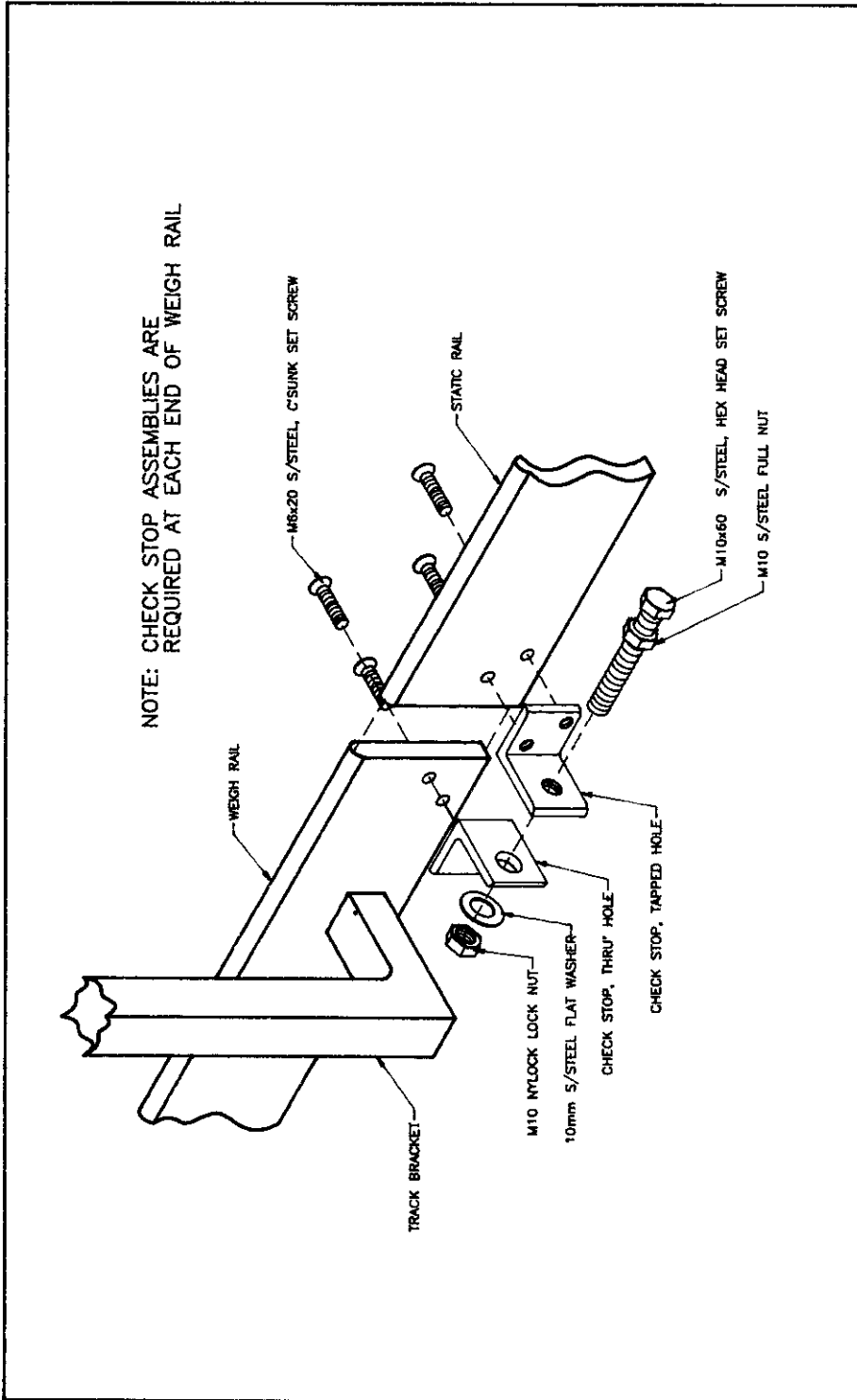
FIGURE 6/18/17B - 1



A & D Mercury Model OHT-600 Overhead-track Weighing Instrument



FIGURE 6/18/17B - 2



OHT-600 Trackwork With 'Check Stops'