



CANCELLED d3
31-12-90

NATIONAL STANDARDS COMMISSION

CERTIFICATE OF APPROVAL No 6/18/11

This is to certify that the pattern of the

A.W.A. Type 1KA70708 Overhead-track Weighing Instrument

submitted by A.W.A. (Aust.) Ltd,
Engineering Products Division,
422 Lane Cove Road,
North Ryde, New South Wales, 2113,

has been approved under the Weights and Measures (Patterns of Instruments) Regulations as being suitable for use for trade.

Pattern: approved 24/10/80

Self-indicating overhead-track weighing instrument of
capacity 90 kg by 0,10 kg, with HBM-Z3H load cell.

The pattern is described in Technical Schedule No 6/18/11 and in drawings and specifications lodged with the Commission.

The approval is subject to review on or after 30/6/85.

All instruments conforming to this approval shall be marked with the approval number "NSC No 6/18/11".

Signed

Executive Director



NATIONAL STANDARDS COMMISSION

TECHNICAL SCHEDULE No 6/18/11

Pattern: A.W.A. Type 1KA70708 Overhead-track Weighing Instrument

Submittor: A.W.A. (Aust.) Ltd,
Engineering Products Division,
422 Lane Cove Road,
North Ryde, New South Wales, 2113.

1. Description of Pattern

A self-indicating overhead-track weighing instrument (Figures 1, 2 and 3).

Maximum capacity	90,0 kg
Scale interval	0,10 kg
Tare capacity	90,0 kg
Track length	510 mm
Load cell	HBM-Z3H 100 kg
Load cell cable length	3 m nominal

1.1 Zero

By hand-operated zero button.

1.2 Tare

(a) A semi-automatic subtractive taring device operated by a push button.

(b) A tare indicator indicates that a tare has been entered and remains illuminated throughout the weighing operation.

1.3 Check Button

When the button marked CHECK/RESET is pressed, an electrical self check of the instrument's equilibrium is initiated. With the button held in, all '8's' then 'hello' is indicated. When the button is released the tare resets to zero.

1.4 Markings

Instruments under this approval are marked with the following data:

Manufacturer's name	
Serial number of instrument	
NSC approval number in the form:	NSC No 6/18/11
Accuracy class in the form:	<u>III</u>
Maximum capacity in the form:	Max*
Minimum capacity in the form:	Min*
Verification scale interval in the form:	$d = e = \dots *$
Maximum subtractive tare in the form:	$T = -\dots$

1.5 Sealing

A lead and wire seal passes through the heads of retaining screws (Figure 4).

2. Test Procedures

1. Zero Range

The maximum range of operation of the zero device should not exceed 4% of the capacity of the instrument ($\pm 2\%$ approximately). Satisfactory setting may be checked by the following method:

With zero balance indicated, apply a load of between 2% and 2.4% of maximum capacity to the instrument and zero the instrument; the instrument should not indicate zero balance.

2. Range of Indication

The maximum mass indicated should not exceed the maximum capacity (Max); above this indicated mass the indicator should blank.

3. Load-cell Creep

Leaving a maximum-capacity load on the load receptor for a period of 30 minutes should not cause the mass indicated to be incorrect, and on removal of the load the mass indicated should be zero $\pm 0,25e$.

4. Test Loads

The application of the test loads specified in Table 1 and the indication of these loads within the applicable tolerance, checks that the instrument operates in accordance with the approved design.

* Repeated in the vicinity of every reading face

TABLE 1

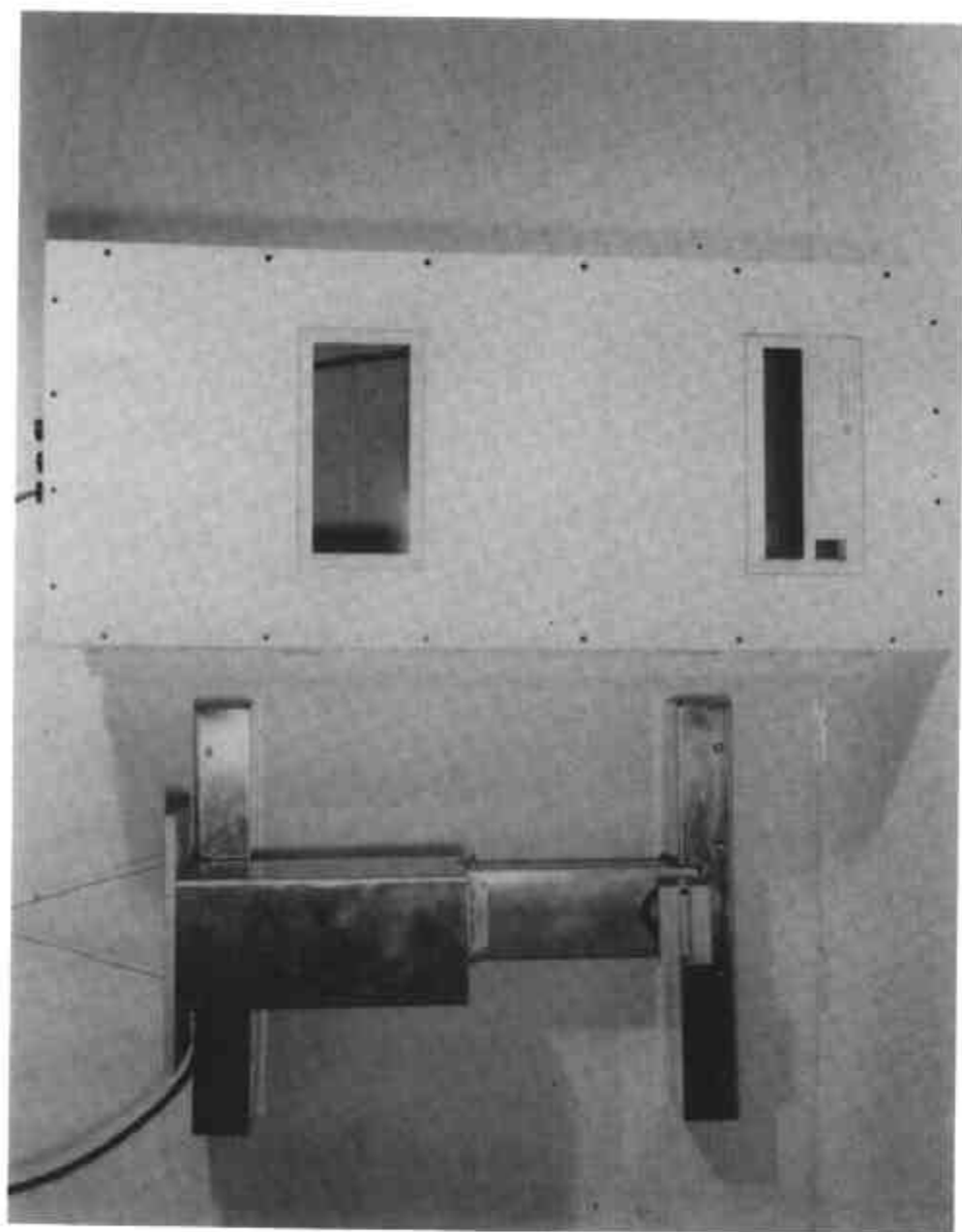
Test load in scale intervals*

50	544,5
99	633,5
188	722,5
277	811,5
366	899,5
455	

* Test Load = Number of scale intervals x scale interval

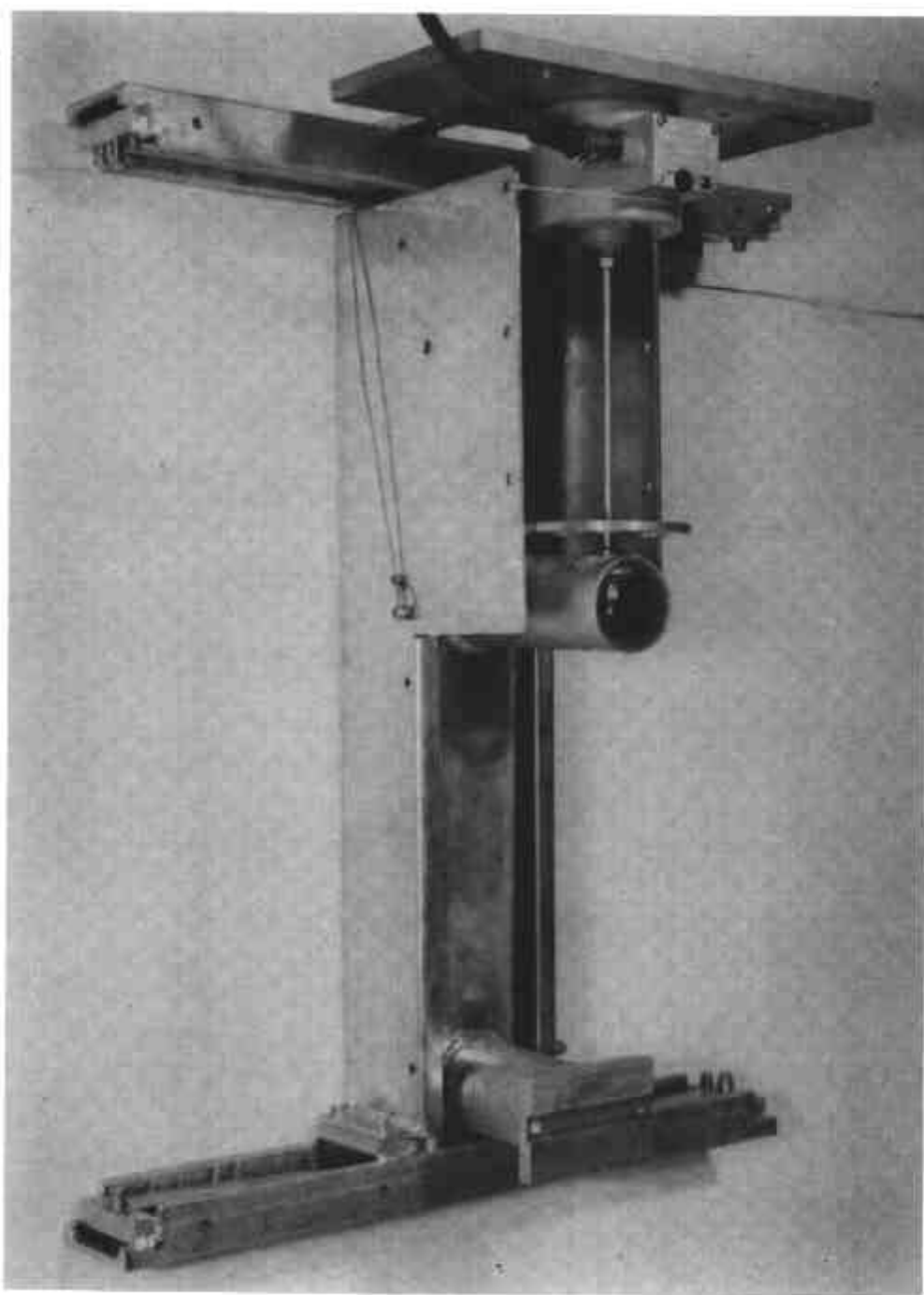
Note: The test load should include a test at capacity, less the tolerance and less 0,5 scale interval.

FIGURE 6/18/11 - 1



A.W.A. Type 1KA70708 Overhead Track Weighing Instrument
with Weighing Rail removed

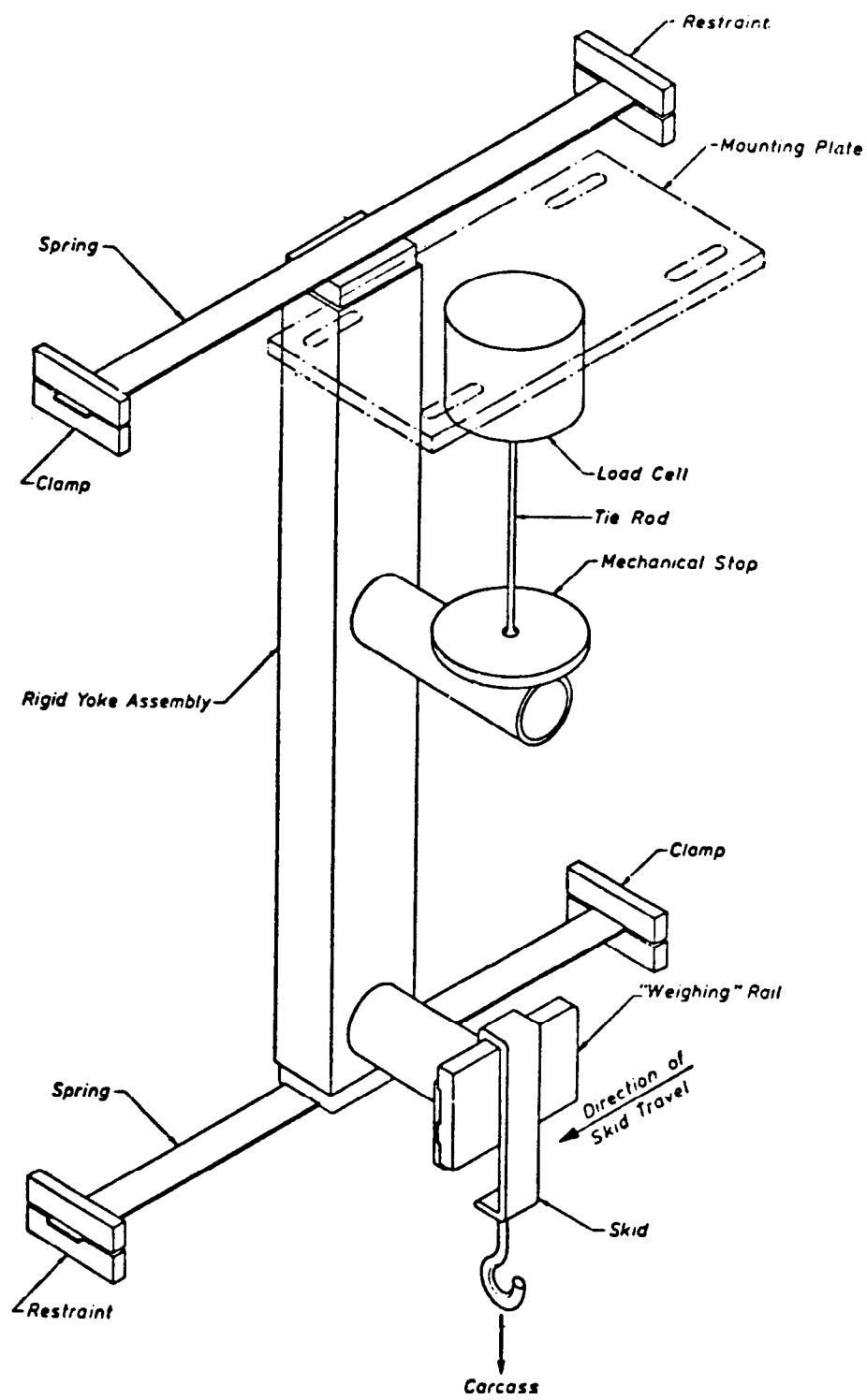
FIGURE 6/18/11 - 2



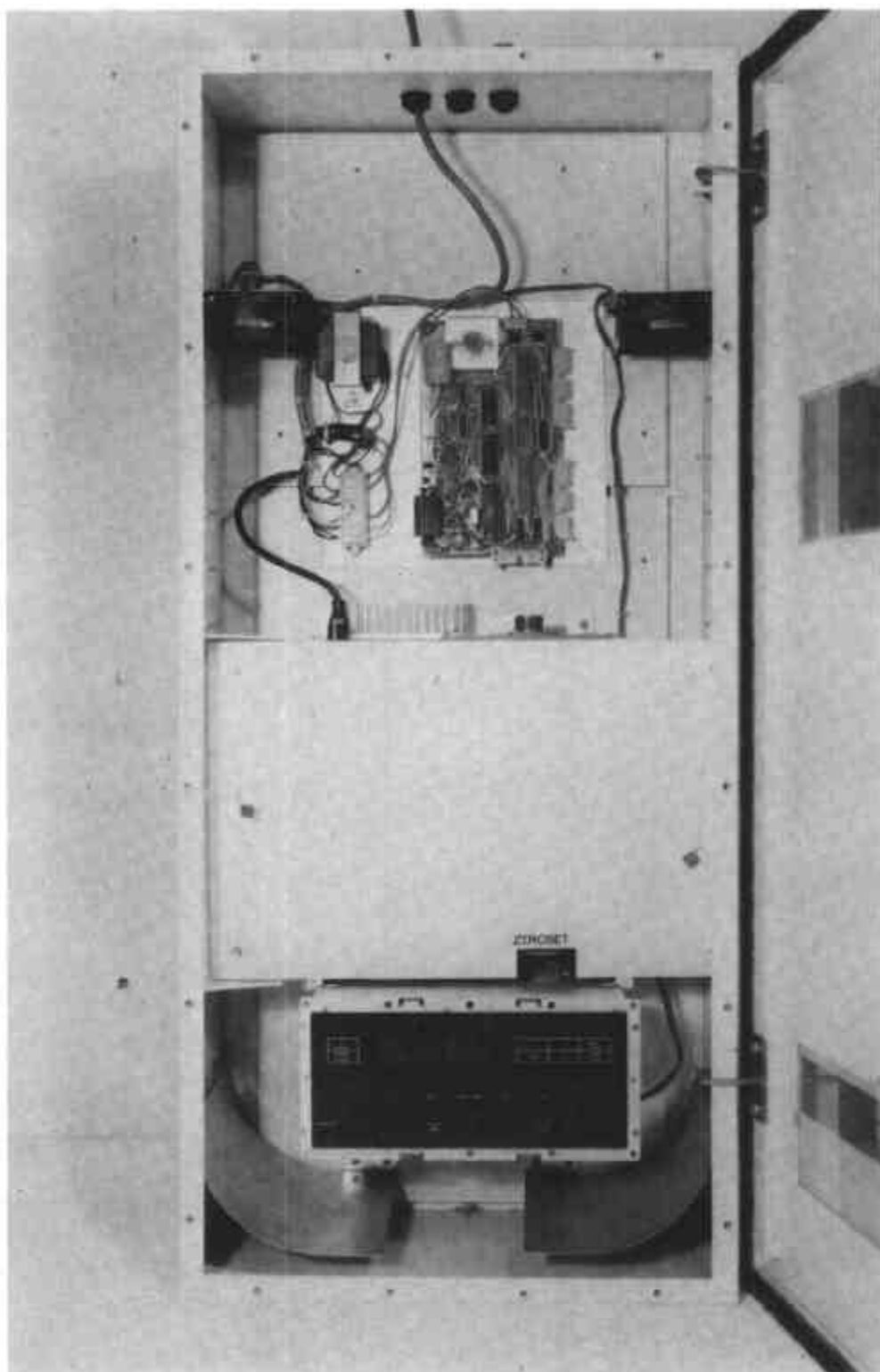
Weigh Head with Covers and
Weighing Rail removed

7/11/80

FIGURE 6/18/11 - 3



Weigh Head



Sealing Arrangement

7/11/80