



**National Standards Commission**  
**Cancellation**  
**Certificate of Approval No 6/10B/52**

This is to certify that the approval for use for trade granted in respect of the

Rite-Weigh Model RW-1 Weighing Instrument

submitted by Rite-Weigh Scale Service Pty Ltd  
9 Wetherill Street  
Lidcombe NSW 2141

has been cancelled in respect of new instruments as from 1 May 2000.

Instruments which were verified/certified before that date may, with the concurrence of the relevant verifying authority, be submitted for reverification.

Signed and sealed by a person authorised under Regulation 63 of the National Measurement Regulations 1999 to exercise the powers and functions of the Commission under this Regulation.

A handwritten signature in black ink, appearing to read 'J. Burch'. The signature is written in a cursive style with a large initial 'J'.

# National Standards Commission



## Certificate of Approval

**No 6/10B/52**

Issued under Regulation 9  
of the  
National Measurement (Patterns of Measuring Instruments) Regulations

This is to certify that an approval for use for trade has been granted in respect of  
the

Rite-Weigh Model RW-1 Weighing Instrument

submitted by Rite-Weigh Scale Service Pty Ltd  
9 Wetherill Street  
Lidcombe NSW 2141.

**NOTE:** This Certificate relates to the suitability of the pattern of the instrument for use for trade only in respect of its metrological characteristics. This Certificate does not constitute or imply any guarantee of compliance by the manufacturer or any other person with any requirements regarding safety.

### CONDITIONS OF APPROVAL

This approval is subject to review on or after 1 December 1995.  
This approval expires in respect of new instruments on 1 December 1996.

Instruments purporting to comply with this approval shall be marked NSC No 6/10B/52 and only by persons authorised by the submittor.

Auxiliary devices used with this instrument shall comply with the requirements of General Supplementary Certificate No S1/0/A.

It is the submitter's responsibility to ensure that all instruments marked with this approval number are constructed as described in the documentation lodged with the Commission and with the relevant Certificate of Approval and Technical Schedule. Failure to comply with this Condition may attract penalties under Section 19B of the National Measurement Act and may result in cancellation or withdrawal of the approval, in accordance with the Commission's Document 106.

The values of the performance criteria (maximum number of scale intervals etc.) applicable to the instrument shall be within the limits specified herein and in any approval documentation for the components where they are approved separately.

The pattern as approved herein or with substitute load cells and/or indicator and in other capacities and configurations, shall comply with General Certificate No 6B/0.

The Commission reserves the right to examine any instrument or component of an instrument purporting to comply with this approval.

#### DESCRIPTIVE ADVICE

**Pattern:** approved 23 November 1990

- . A Rite-Weigh model RW-1 weighing instrument of 60 000 kg maximum capacity.

Technical Schedule No 6/10B/52 describes the pattern.

**Variation:** approved 24 September 1992

1. With a hopper or tank-type load receptor.

Technical Schedule No 6/10B/52 Variation No 1 describes variation 1.

**Variation:** approved 7 October 1994

2. With a model RWH1 hopper load receptor.

**Variation:** approved 10 November 1995

3. With a model RWH2 hopper load receptor.

Technical Schedule No 6/10B/52 Variation No 2 describes variations 2 and 3.

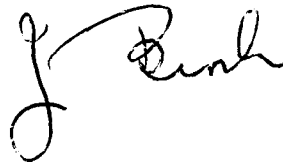
FILING ADVICE

Certificate of Approval No 6/10B/52 dated 14 March 1991 is superseded by this Certificate and may be destroyed.

The documentation for this approval now comprises.

Certificate of Approval No 6/10B/52 dated 27 November 1995  
Technical Schedule No 6/10B/52 dated 14 March 1991 (incl. Test Procedure)  
Technical Schedule No 6/10B/52 Variation No 1 dated 31 March 1993  
Technical Schedule No 6/10B/52 Variation No 2 dated 27 November 1995  
Figure 1 dated 14 March 1991  
Figure 2 dated 31 March 1993  
Figures 3 and 4 dated 27 November 1995

Signed and sealed by a person authorised under Regulation 9 of the National Measurement (Patterns of Measuring Instruments) Regulations to exercise the powers and functions of the Commission under this Regulation.

A handwritten signature in black ink, appearing to read 'J. Bink', is written in a cursive style.



# National Standards Commission

## TECHNICAL SCHEDULE No 6/10B/52

**Pattern:** Rite-weigh Model RW-1 Weighing Instrument

**Submitter:** Rite-weigh Scale Service Pty Ltd  
9 Wetherill Street  
Lidcombe NSW 2141.

### 1. Description of Pattern

A Rite-weigh model RW-1 self-indicating weighing instrument of 60 000 kg maximum capacity and approved for use with up to 3000 verification scale intervals.

#### 1.1 Basework

The model RW-1 basework has the platform directly supported by 4 load cells.

Longitudinal and transverse movement is limited by up to 8 Philips model PR 6152/02 horizontal constrainers.

#### 1.2 Load Cells

Toledo model 0760 ('Digitol') load cells of 22 700 kg capacity are used as described in the documentation of NSC approval No S252 (\*) and mounted as shown in Figure 1.

#### 1.3 Indicator

A Toledo model 8530 digital indicator is used as described in the documentation of NSC approval No S253 (\*).

(\*) Refer to the Special Conditions of Approval in these approval documents.

#### 1.4 Verification Provision

Provision is made for a verification mark to be applied.

## 1.5 Markings

Instruments are marked with the following data, together in one location:

Manufacturer's name or mark	
Serial number	
NSC approval numbers - instrument	NSC No 6/10B/52
- load cells	NSC No S.....
- indicator	NSC No S.....
Accuracy class	Ⓜ
Maximum capacity	Max..... kg *
Minimum capacity	Min..... kg *
Verification scale interval	e = d =..... kg *
Maximum subtractive tare	T = -..... kg

\* These are repeated adjacent to each reading face.

## TEST PROCEDURE

Instruments should be tested in conjunction with any tests specified in the approval documentation for the indicator used, and in accordance with any relevant tests specified in the Inspector's Handbook.

### Maximum Permissible Errors at Verification/Certification

The maximum permissible errors for increasing and decreasing loads, expressed in terms of verification scale interval (e), with the instrument adjusted to zero within  $\pm 0.25e$  at no load, are:

- $\pm 0.5e$  for loads from 0 to  $500e$ ;
- $\pm 1.0e$  for loads over  $500e$  up to  $2\,000e$ ; and
- $\pm 1.5e$  for loads over  $2\,000e$ .



# National Standards Commission

TECHNICAL SCHEDULE No 6/10B/52

VARIATION No 1

**Pattern:** Rite-weigh Model RW-1 Weighing Instrument.

**Submitter:** Rite-weigh Scale Service Pty Ltd  
9 Wetherill Street  
Lidcombe NSW 2141.

## 1. Description of Variant 1

Other models with a single or multiple-bin hopper or tank-type load receptor (Figure 2) of 30 000 kg maximum capacity and approved for use with up to 1500 verification scale intervals.

Four Philips model PR6222/34H load cells of 30 000 kg capacity are used as described in the documentation of NSC approval No S263. Horizontal stays are fitted at each load cell mounting.

A Gedge Systems model GS1650 Mk3 digital indicator is used as described in the documentation of NSC approval No S193A.



## National Standards Commission

TECHNICAL SCHEDULE No 6/10B/52

VARIATION No 2

**Pattern:** Rite-Weigh Model RW-1 Weighing Instrument.

**Submitter:** Rite-Weigh Scale Service Pty Ltd  
9 Wetherill Street  
Lidcombe NSW 2141.

### 1. Description of Variants

#### 1.1 Variant 2

A model RWH1 single bin hopper load receptor of 100 kg maximum capacity with a verification scale interval of 0.1 kg. The receptor is suspended from or mounted on two Commission-approved load cells (Figure 3).

GEC Avery model 8713 load cells of 250 kg capacity are used, and are mounted in accordance with the manufacturer's instructions and as described in the documentation of NSC approval S203A.

The vertical location of the load cells on the hopper or supporting legs may be varied within limits which provide stability of the hopper.

The hopper is restrained from excessive lateral movement.

An A & D Mercury model AD-4323 digital indicator is used as described in the documentation of NSC approval No S251A.

#### 1.2 Variant 3

A model RWH2 single bin hopper load receptor in capacities up to 1499 kg and with up to 3000 verification scale intervals. The receptor is suspended from or mounted on two, three or four Commission-approved load cells (Figure 4).

GEC Avery model 8713 load cells of 500 kg capacity are used, and are mounted in accordance with the manufacturer's instructions and as described in the documentation of NSC approval S203A.

The load receptor may be rectangular, square or circular in cross-section. The load cells are located symmetrically around the hopper.



The vertical location of the load cells on the hopper or supporting legs may be varied within limits which provide stability of the hopper.

The hopper is restrained from excessive lateral movement.

An A & D Mercury model AD-4323 digital indicator is used as described in the documentation of NSC approval No S251A.

# National Standards Commission



## NOTIFICATION OF CHANGE

CERTIFICATE OF APPROVAL No 6/10B/52

CHANGE No 1

The following change is made to the approval documentation for the

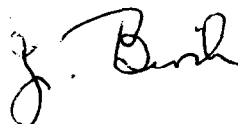
Rite-weigh Model RW-1 Weighing Instrument

submitted by Rite-weigh Scale Service Pty Ltd  
9 Wetherill Street  
Lidcombe NSW 2141.

In Technical Schedule No 6/10B/52 Variation No 1 dated 31/3/93, clause 1. **Description of Variant 1** is amended by modifying the first paragraph to read, in part:

"... of 30 000 kg maximum capacity and approved for use with up to 3000 verification scale intervals."

Signed and sealed by a person authorised under Regulation 9 of the National Measurement (Patterns of Measuring Instruments) Regulations to exercise the powers and functions of the Commission under this Regulation.



# National Standards Commission



## Notification of Change Certificate of Approval No 6/10B/52 Change No 2

The following changes are made to the approval documentation for the

Rite-Weigh Model RW-1 Weighing Instrument

submitted by            Rite-Weigh Scale Service Pty Ltd  
                                 9 Wetherill Street  
                                 Lidcombe    NSW            2141.

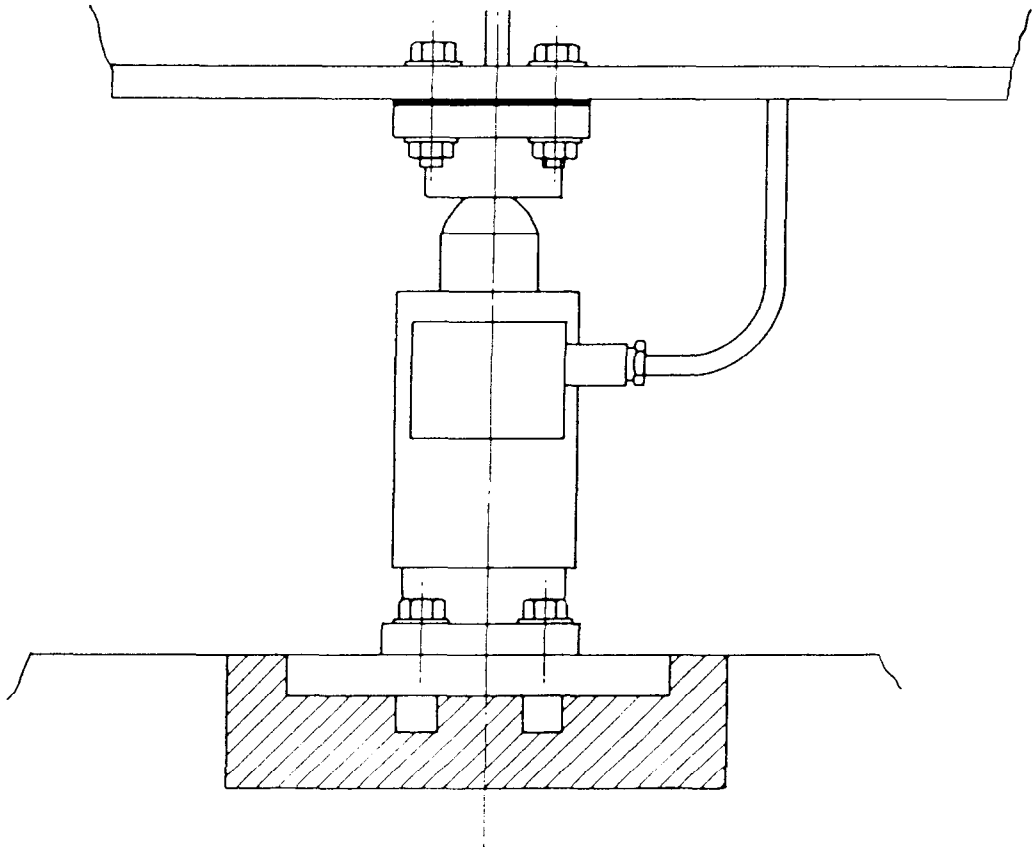
In Certificate of Approval No 6/10B/52 dated 27 November 1995;

1.    The Condition of Approval referring to the review of the approval should be amended to read:  

This approval becomes subject to review on 1 December 1995, and then every 5 years thereafter.
2.    The Condition of Approval referring to the expiry of the approval should be deleted.

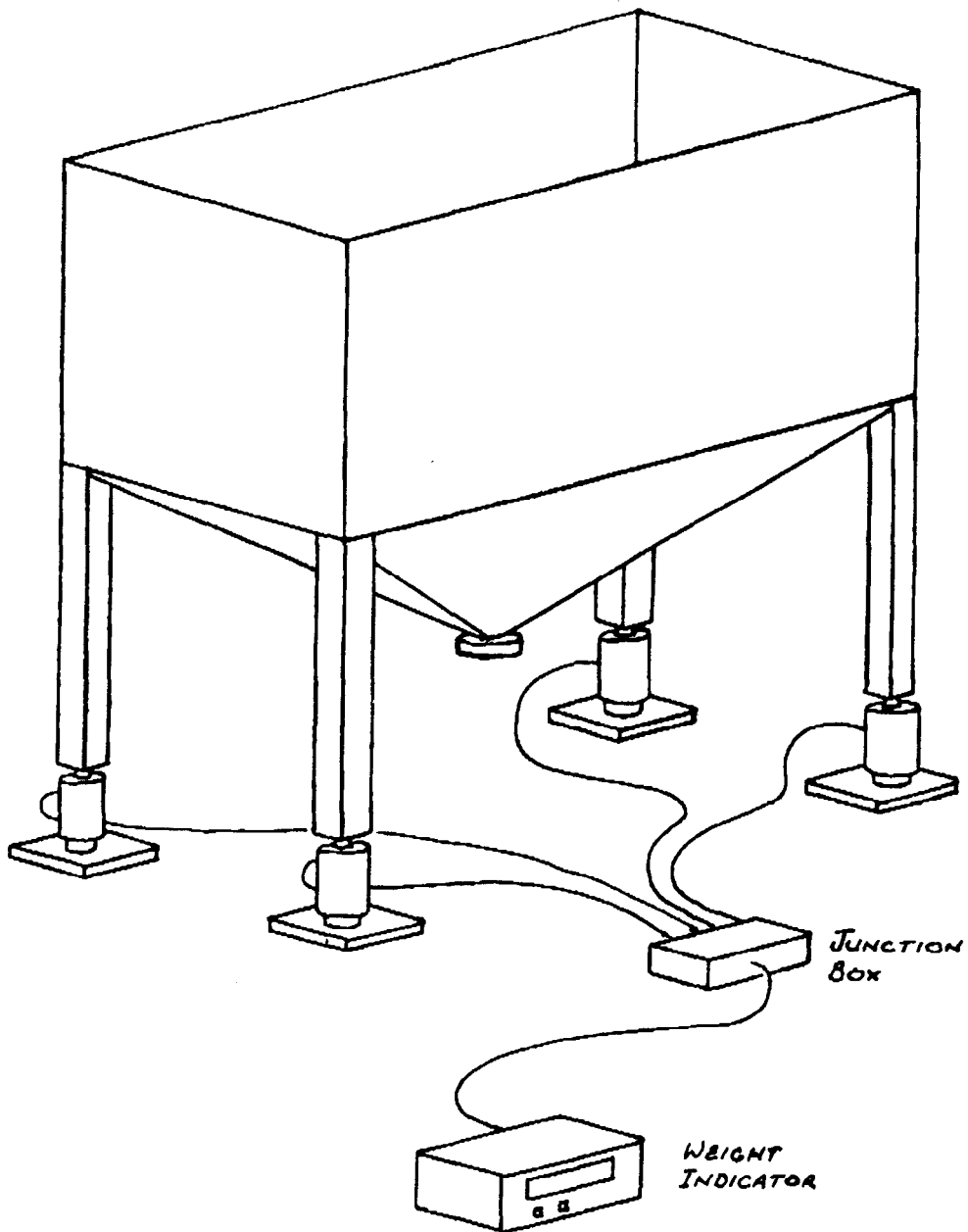
Signed and sealed by a person authorised under Regulation 9 of the National Measurement (Patterns of Measuring Instruments) Regulations to exercise the powers and functions of the Commission under this Regulation.

FIGURE 6/10B/52 - 1



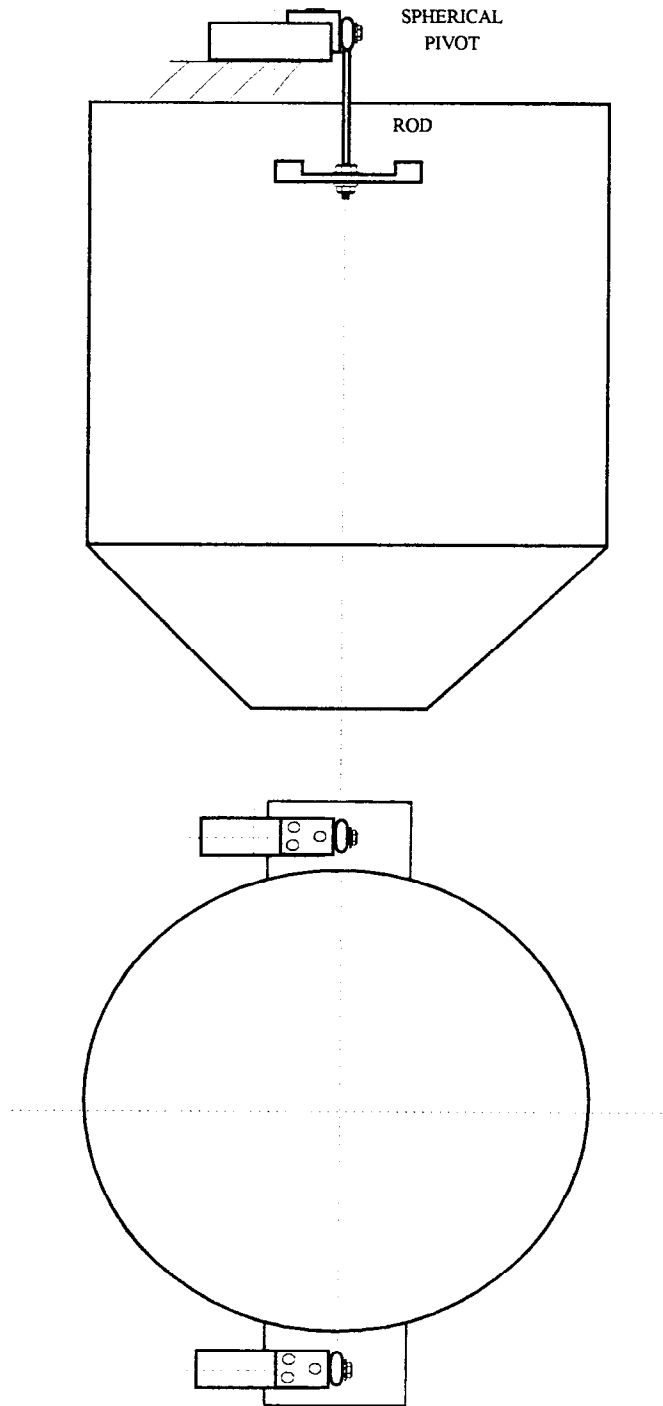
Load Cell Mounting for Model RW-1 Basework

FIGURE 6/10B/52 - 2



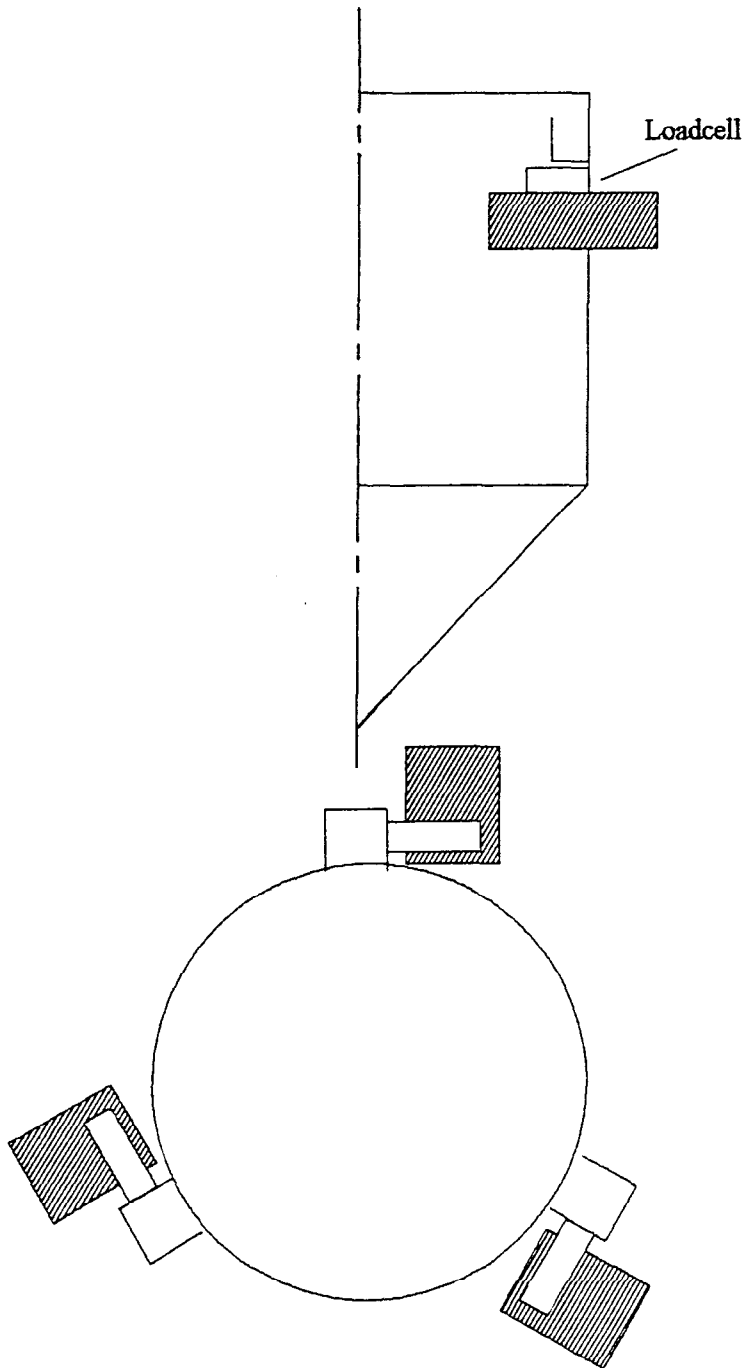
Typical Hopper-type Load Receptor

FIGURE 6/10B/52 - 3



Typical Variant 2 Hopper

FIGURE 6/10B/52 - 4



Typical Three-load-cell Variant 3 Hopper