



6/10B/50
11/3/88

NATIONAL STANDARDS COMMISSION

NATIONAL MEASUREMENT (PATTERNS OF INSTRUMENTS) REGULATIONS

REGULATION 9

CERTIFICATE OF APPROVAL No 6/10B/50

This is to certify that an approval for use for trade has been granted in respect of the pattern and variants of the

Queensland Weighing Machines Model ERW Weighing Instrument

submitted by Queensland Weighing Machines Pty Ltd
Cnr Burrows and Taylor Streets
Bowen Hills QLD 4006.

CONDITIONS OF APPROVAL

This approval is subject to review on or after 1/10/92.
This approval expires in respect of new instruments on 1/10/93.

Instruments purporting to comply with this approval shall be marked NSC No 6/10B/50.

The approval may be withdrawn if instruments are constructed other than as described in the drawings and specifications lodged with the Commission.

The values of the performance criteria (maximum number of scale intervals etc.) applicable to the instrument shall be within the limits specified in this approval or in any approval documentation for the components, where they are approved separately.

The load cells used shall be subject to regular certification by the Commission.

The weighbridge installed as approved herein or with substitute load cells and/or indicator shall comply with General Certificate No 6/10B/0 for full load cell weighbridges.

Signed

Executive Director

Descriptive Advice

Pattern: approved 9/9/87

- A Queensland Weighing Machines model ERW self-indicating weighbridge of 60 t maximum capacity.

Variants: approved 9/9/87

1. In other configurations and of other capacities.
2. The instrument as a hopper or tank weighing instrument of various capacities and known as a model EHS.

Technical Schedule No 6/10B/50 describes the pattern and variants 1 and 2.

.... /2

6/10B/50
11/3/88

Certificate of Approval No 6/10B/50

Page 2

Filing Advice

The documentation for this approval comprises:

Certificate of Approval No 6/10B/50 dated 11/3/88
Technical Schedule No 6/10B/50 dated 11/3/88 (incl. Test Procedure)
Figure 1 dated 11/3/88



NATIONAL STANDARDS COMMISSION

6/10B/50
11/3/88

TECHNICAL SCHEDULE No 6/10B/50

Pattern: Queensland Weighing Machines Model ERW Weighing Instrument.

Submitter: Queensland Weighing Machines Pty Ltd
Cnr Burrows and Taylor Streets
Bowen Hills QLD 4006.

1. Description of Pattern

A self-indicating weighbridge of 60 t maximum capacity approved for use with up to 3000 verification scale intervals.

1.1 Basework

The model ERW basework has the platform directly supported by 6 load cells (Figure 1).

1.2 Load Cells

Six Molenschot model CSP-M-25-A load cells of 25 t capacity are used. These are described in the documentation of NSC approval No S133 and may be marked as specified in that approval or alternatively as specified in 1.4.2 below, when fitted in this instrument.

1.3 Indicator

The A & D model 4316 digital indicator is described in the documentation of NSC approval No S161 and may be marked as specified in that approval or alternatively as specified in 1.4.1 below, when fitted in this instrument.

1.4 Markings

1.4.1

Instruments are marked with the following data, in a clearly visible location:

Manufacturer's name or mark	
Approval number	NSC No 6/10B/50
Serial number	
Accuracy class	(III)
Maximum capacity	Max kg *
Minimum capacity	Min kg *
Verification scale interval	e = d = kg *
Maximum subtractive tare	T = - kg
Load cell approval number)	
Headwork approval number)	where
Basework approval number)	appropriate

* Repeated adjacent to each reading face, if not already in that vicinity.

1.4.2

The following is the minimum data required to be marked on the load cells:

Manufacturer's name or mark
Model number
Serial number
Maximum capacity

Load cell serial numbers may alternatively be marked on a nameplate attached to the indicator or on metal tags attached to the indicator via lead and wire seals.

1.5 Verification Provision

Provision is made for a verification mark to be applied.

2. Description of Variants

2.1 Variant 1

In other capacities using the load cells of the pattern or other Commission-approved load cells.

Note: More or less than the 6 load cells of the pattern may be used provided the instrument complies with NSC General Certificate 6/10B/0.

2.2 Variant 2

The instrument as a hopper or tank weighing instrument of various capacities using 3 or more Commission-approved load cells to support the hopper or tank.

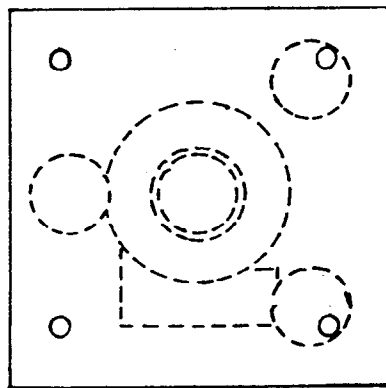
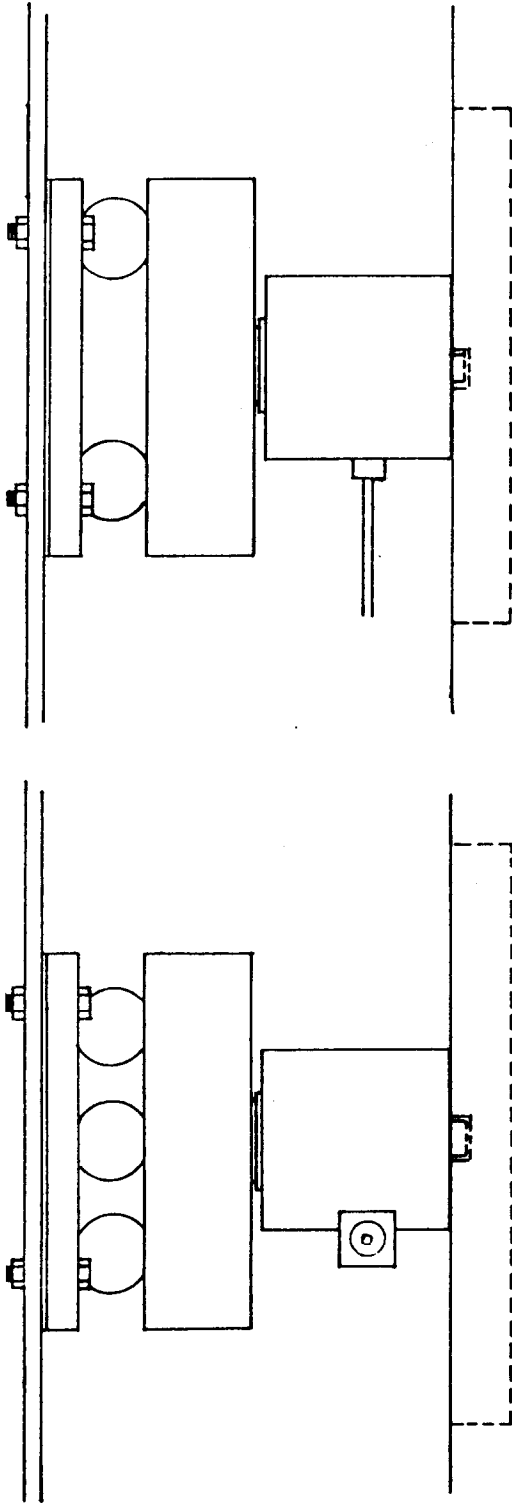
The instrument is known as a model EHS weighing instrument.

TEST PROCEDURE No 6/10B/50

Instruments should be tested in conjunction with any tests specified in the approval documentation for the indicator used, and in accordance with any relevant tests specified in the Inspector's Handbook.

The results shall not exceed the maximum permissible errors specified in Document 118, 2nd Edition, October 1986.

FIGURE 6/10B/50 - 1



Typical Load Cell Mounting