

National Standards Commission



Certificate of Approval

No 6/9C/228A

Issued under Regulation 9
of the
National Measurement (Patterns of Measuring Instruments) Regulations

This is to certify that an approval for use for trade has been granted in respect of the

A'Asia Scales Model P3000 Weighing Instrument

submitted by A'Asia Scale Service Pty Ltd
55 Railway Parade
Rocklea QLD 4106.

NOTE: This Certificate relates to the suitability of the pattern of the instrument for use for trade only in respect of its metrological characteristics. This Certificate does not constitute or imply any guarantee of compliance by the manufacturer or any other person with any requirements regarding safety.

This Certificate is issued upon completion of a review of NSC approval No 6/9C/228.

CONDITIONS OF APPROVAL

This approval is subject to review on or after 1 September 2000.
This approval expires in respect of new instruments on 1 September 2001.

Instruments purporting to comply with this approval shall be marked NSC No 6/9C/228A and only by persons authorised by the submittor.

It is the submittor's responsibility to ensure that all instruments marked with this approval number are constructed as described in the documentation lodged with the Commission and with the relevant Certificate of Approval and Technical Schedule. Failure to comply with this Condition may attract penalties under Section 19B of the National Measurement Act and may result in cancellation or withdrawal of the approval, in accordance with the Commission's Document 106.

The values of the performance criteria (maximum number of scale intervals etc.) applicable to the instrument shall be within the limits specified herein and in any approval documentation for the components where they are approved separately.

The Commission reserves the right to examine any instrument or component of an instrument purporting to comply with this approval.

The pattern as approved herein or with substitute load cells and/or indicator, and in other capacities, shall comply with General Certificate No 6B/0.

DESCRIPTIVE ADVICE

Pattern: approved 10 August 1995

- An A'Asia Scales model P3000 weighing instrument of 3000 kg maximum capacity.

Variant: approved 10 August 1995

1. Model P1500 of up to 1500 kg maximum capacity.

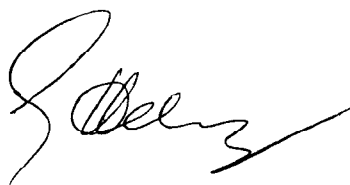
Technical Schedule No 6/9C/228A describes the pattern and variant 1.

FILING ADVICE

The documentation for this approval comprises:

Certificate of Approval No 6/9C/228A dated 31 October 1995
Technical Schedule No 6/9C/228A dated 31 October 1995 (incl. Test
Procedure)
Figures 1 and 2 dated 31 October 1995

Signed and sealed by a person authorised under Regulation 9 of the National Measurement (Patterns of Measuring Instruments) Regulations to exercise the powers and functions of the Commission under this Regulation.





National Standards Commission

TECHNICAL SCHEDULE No 6/9C/228A

Pattern: A'Asia Scales Model P3000 Weighing Instrument.

Submittor: A'Asia Scale Service Pty Ltd
55 Railway Parade
Rocklea QLD 4106.

1. Description of Pattern

An A'Asia Scales model P3000 self-indicating weighing instrument of 3000 kg maximum capacity and approved for use with up to 3000 verification scale intervals.

1.1 Basework

The model P3000 basework (Figures 1 and 2) has the platform directly supported by means of ball-and-cup assemblies on load cells which are mounted on a subframe.

1.2 Load Cells

Four Precision Transducers model LS1000 load cells of 1000 kg capacity are used as described in the documentation of NSC approval No S224A, and mounted as shown in Figure 2.

1.3 Indicator

A Gedge model GS-1650 Mk3 digital indicator is used. This is also described in the documentation of NSC approval No S193A.

1.4 Markings

Instruments are marked with the following data, together in one location:

Manufacturer's name or mark	
Serial number	
NSC approval numbers	- instrument NSC No 6/9C/228A
	- load cells NSC No S
	- indicator NSC No S
Accuracy class	III
Maximum capacity	Max kg *
Minimum capacity	Min kg *
Verification scale interval	e = kg *

* These are repeated adjacent to each reading face.

1.5 Verification/Certification Provision

Provision is made for a verification/certification mark to be applied.

1.6 Sealing Provision

Provision is made for the calibration adjustments to be sealed.

2. Description of Variant 1

A model P1500 weighing instrument of up to 1500 kg maximum capacity approved for use with up to 3000 verification scale intervals.

TEST PROCEDURE

Instruments should be tested in conjunction with any tests specified in the approval documentation for the indicator used, and in accordance with any relevant tests specified in the Inspector's Handbook.

Maximum Permissible Errors at Verification/Certification

The maximum permissible errors for increasing and decreasing loads, expressed in terms of verification scale interval (e), with the instrument adjusted to zero within $\pm 0.25e$ at no load, are:

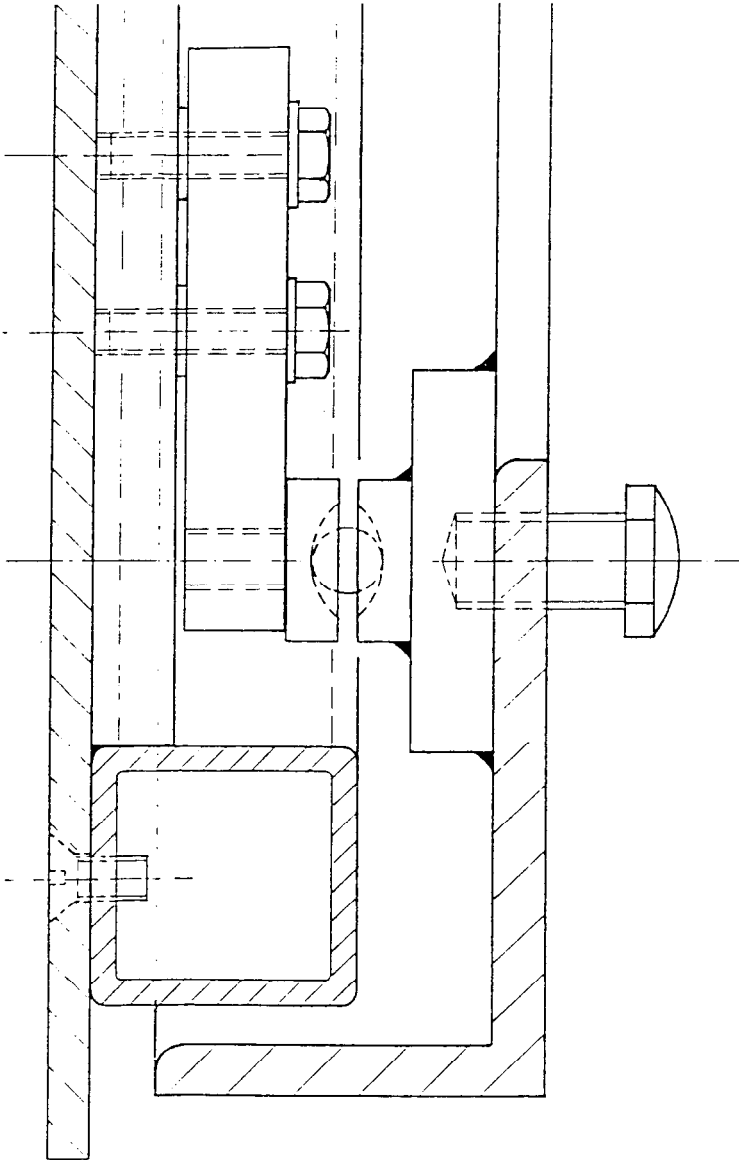
- $\pm 0.5e$ for loads from 0 to $500e$;
- $\pm 1.0e$ for loads over $500e$ up to $2000e$; and
- $\pm 1.5e$ for loads over $2000e$.

FIGURE 6/9C/228A - 1



A/Asia Scales Model P3000/P1500 Basework

FIGURE 6/9C/228A - 2



Showing Load Cell Mounting