



Australian Government

National Standards Commission

12 Lyonpark Road, North Ryde NSW 2113 Australia

Cancellation

Certificate of Approval No 6/9C/223A

This is to certify that the approval for use for trade granted in Certificate No 6/9C/223A issued 31 August 1995, in respect of the

Colonial Weighing Model CSC-ZX Weighing Instrument

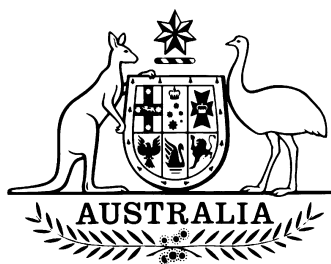
submitted by Colonial Weighing Australia P/L
5 Sara Grove
Tottenham VIC 3012

has been cancelled in respect of new instruments as from 1 July 2004.

Signed by a person authorised under Regulation 60 of the National Measurement Regulations 1999 to exercise the powers and functions of the Commission under this Regulation.

A handwritten signature in black ink, appearing to be 'J. G. T.', written in a cursive style.

6/9C/223A
29 June 2001



National Standards Commission

12 Lyonpark Road, North Ryde NSW

Notification of Change

Certificate of Approval No 6/9C/223A

Change No 1

The following change is made to the approval documentation for the

Colonial Weighing Model CSC-ZX Weighing Instrument

submitted by Colonial Weighing Australia P/L
5 Sara Grove
Tottenham VIC 3012.

In Certificate of Approval No 6/9C/223A dated 31 August 1995, the Condition of Approval referring to the expiry of the approval should be deleted.

Signed by a person authorised under Regulation 60 of the National Measurement Regulations 1999 to exercise the powers and functions of the Commission under this Regulation.



National Standards Commission



Certificate of Approval

No 6/9C/223A

Issued under Regulation 9
of the
National Measurement (Patterns of Measuring Instruments) Regulations

This is to certify that an approval for use for trade has been granted in respect of the

Colonial Weighing Model CSC-ZX Weighing Instrument

submitted by Colonial Weighing Australia P/L
5 Sara Grove
Tottenham VIC 3012.

NOTE: This Certificate relates to the suitability of the pattern of the instrument for use for trade only in respect of its metrological characteristics. This Certificate does not constitute or imply any guarantee of compliance by the manufacturer or any other person with any requirements regarding safety.

This approval is issued upon completion of a review of NSC approval No 6/9C/223.

CONDITIONS OF APPROVAL

This approval is subject to review on or after 1 July 2000.
This approval expires in respect of new instruments on 1 July 2001.

Instruments purporting to comply with this approval shall be marked NSC No 6/9C/223A and only by persons authorised by the submitter.

Auxiliary devices used with this instrument shall comply with the requirements of General Supplementary Certificate No S1/0/A.

It is the submittor's responsibility to ensure that all instruments marked with this approval number are constructed as described in the documentation lodged with the Commission and with the relevant Certificate of Approval and Technical Schedule. Failure to comply with this Condition may attract penalties under Section 19B of the National Measurement Act and may result in cancellation or withdrawal of the approval, in accordance with the Commission's Document 106.

The values of the performance criteria (maximum number of scale intervals etc.) applicable to the instrument shall be within the limits specified herein and in any approval documentation for the components where they are approved separately.

The Commission reserves the right to examine any instrument or component of an instrument purporting to comply with this approval.

The pattern as approved herein or with substitute load cells and/or indicator, and in other capacities, shall comply with General Certificate No 6B/0.

DESCRIPTIVE ADVICE

Pattern: approved 16 June 1995

- A Colonial Weighing model CSC-ZX self-indicating weighing instrument of 1500 kg maximum capacity.

Variant: approved 16 June 1995

1. With a maximum capacity between 150 kg and 1500 kg.

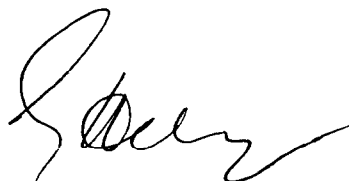
Technical Schedule No 6/9C/223A describes the pattern and variant 1.

FILING ADVICE

The documentation for this approval comprises:

Certificate of Approval No 6/9C/223A dated 31 August 1995
Technical Schedule No 6/9C/223A dated 31 August 1995 (incl. Test Procedure)
Figures 1 and 2 dated 31 August 1995

Signed and sealed by a person authorised under Regulation 9 of the National Measurement (Patterns of Measuring Instruments) Regulations to exercise the powers and functions of the Commission under this Regulation.





National Standards Commission

TECHNICAL SCHEDULE No 6/9C/223A

Pattern: Colonial Weighing Model CSC-ZX Weighing Instrument.

Submittor: Colonial Weighing Australia P/L
5 Sara Grove
Tottenham VIC 3012.

1. Description of Pattern

A Colonial Weighing model CSC-ZX self-indicating weighing instrument of 1500 kg maximum capacity and approved for use with up to 3000 verification scale intervals.

1.1 Basework

The model CSC-ZX basework (Figure 1) has the platform directly supported by 4 load cells (Figure 2).

1.2 Load Cells

Four Kelba model KA-1000-C3 load cells of 1000 kg capacity are used and mounted as shown in Figure 2. The cells are also described in the documentation of NSC approval No S155A.

1.3 Indicator

A Gedge Systems model GS1650 Mk3 digital indicator is used. The indicator is also described in the documentation of NSC approval No S193A.

1.4 Markings

Instruments are marked with the following data, together in one location:

Manufacturer's name or mark	
Serial number	
NSC approval numbers	- instrument
	- load cells
	- indicator
Accuracy class	III
Maximum capacity	Max kg *
Minimum capacity	Min kg *
Verification scale interval	e = kg *

* These are repeated adjacent to each reading face.

1.5 Verification/Certification Provision

Provision is made for a verification/certification mark to be applied.

1.6 Sealing Provision

Provision is made for the calibration adjustments to be sealed using the screws on the face of the indicator.

2. Description of Variant 1

With a maximum capacity of not less than 150 kg and not greater than 1500 kg, and approved for use with up to 3000 verification scale intervals.

TEST PROCEDURE

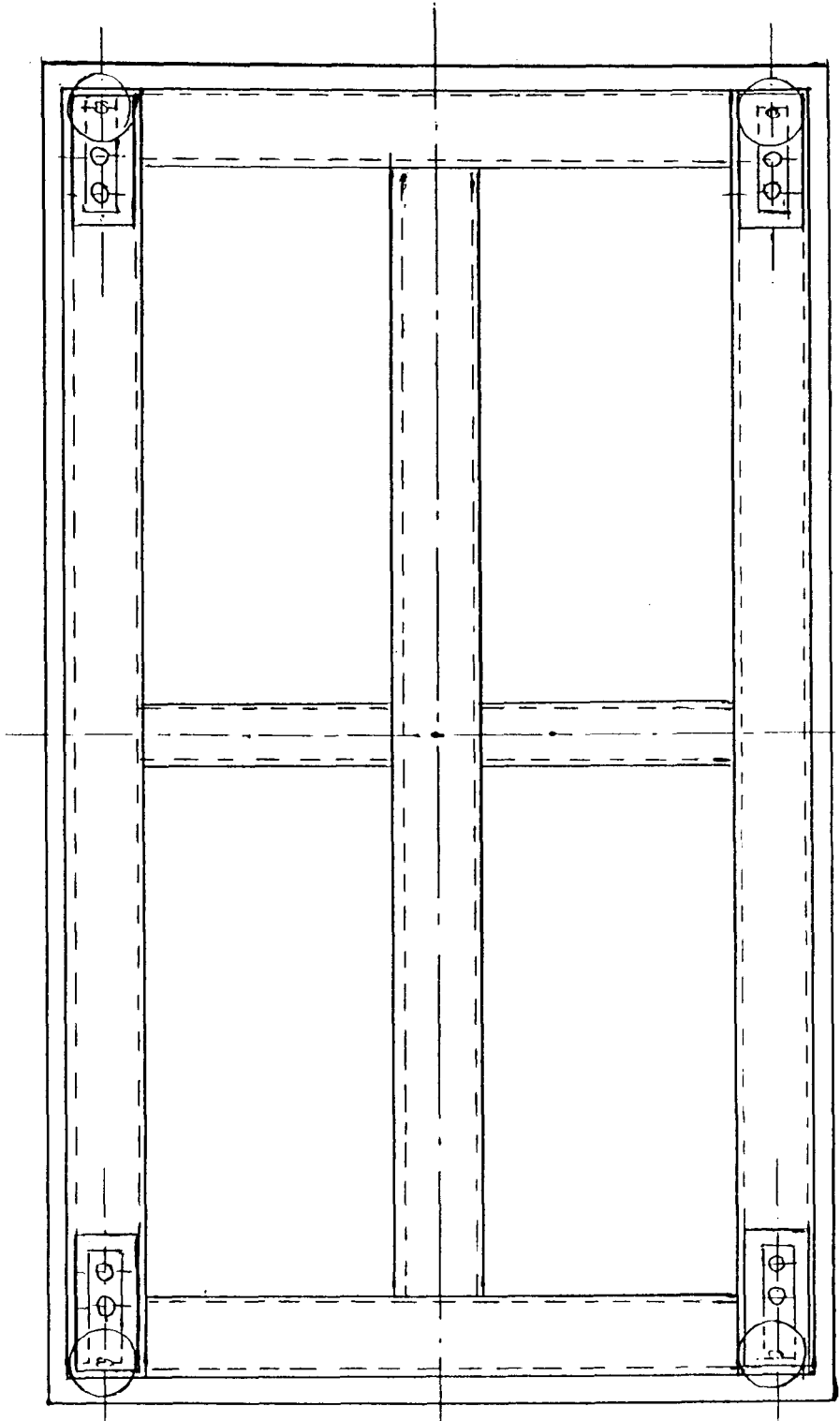
Instruments should be tested in conjunction with any tests specified in the approval documentation for the indicator used, and in accordance with any relevant tests specified in the Inspector's Handbook.

Maximum Permissible Errors at Verification/Certification

The maximum permissible errors for increasing and decreasing loads, expressed in terms of verification scale interval (e), with the instrument adjusted to zero within $\pm 0.25e$ at no load, are:

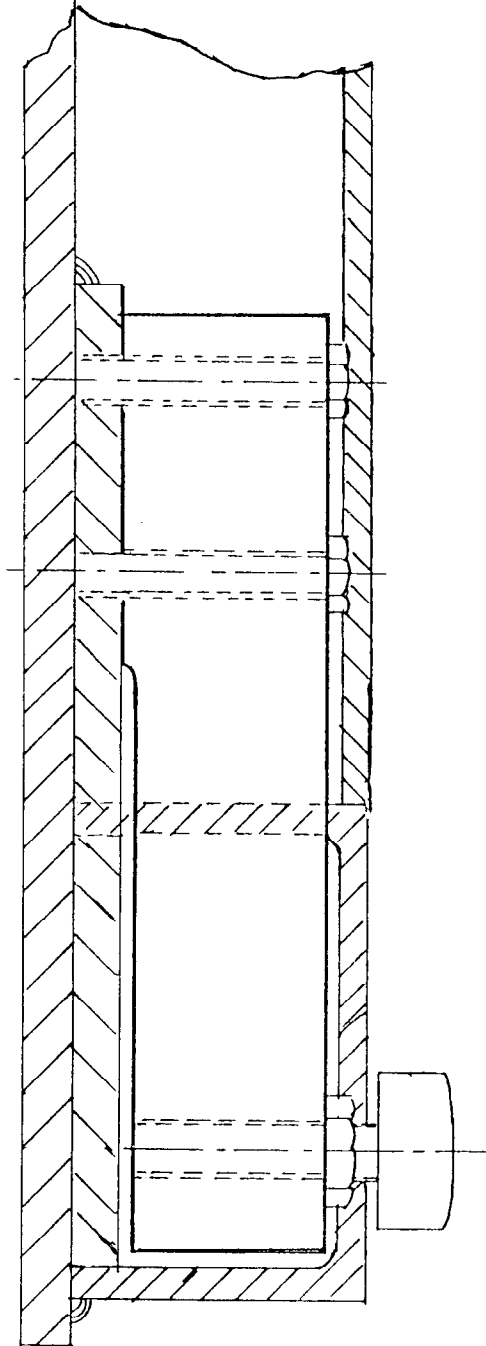
- $\pm 0.5e$ for loads from 0 to $500e$;
- $\pm 1.0e$ for loads over $500e$ up to $2000e$; and
- $\pm 1.5e$ for loads over $2000e$.

FIGURE 6/9C/223A - 1



Colonial Weighing Model CSC-ZX Basework

FIGURE 6/9C/223A - 2



Load Cell Mounting