



Australian Government

**National Measurement
Institute**

Bradfield Road, West Lindfield NSW 2070

Cancellation
Certificate of Approval No 6/10B/46B

Issued by the Chief Metrologist under Regulation 60
of the
National Measurement Regulations 1999

This is to certify that the approval for use for trade granted in respect of the

Mettler Toledo Model 7560 Weighing Instrument

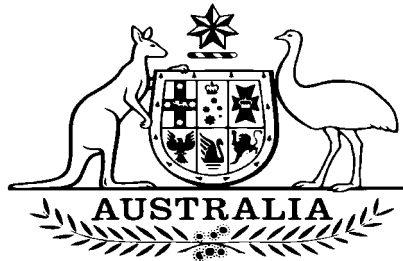
submitted by Mettler Toledo Limited
now of Unit 3, 220 Turner Street
Port Melbourne VIC 3207

has been cancelled in respect of new instruments as from 1 September 2006.

Signed by a person authorised by the Chief Metrologist
to exercise his powers under Regulation 60 of the
National Measurement Regulations 1999.

A handwritten signature in black ink, appearing to be 'J. G. T.', written in a cursive style.

National Standards Commission



Certificate of Approval

No 6/10B/46B

Issued under Regulation 9
of the
National Measurement (Patterns of Measuring Instruments) Regulations

This is to certify that an approval for use for trade has been granted in respect of the

Mettler Toledo Model 7560 Weighing Instrument

submitted by Mettler Toledo Limited
 525 Graham Street
 Port Melbourne VIC 3207.

NOTE: This Certificate relates to the suitability of the pattern of the instrument for use for trade only in respect of its metrological characteristics. This Certificate does not constitute or imply any guarantee of compliance by the manufacturer or any other person with any requirements regarding safety.

This Certificate is issued upon completion of a review of NSC approval No 6/10B/46A.

CONDITIONS OF APPROVAL

This approval becomes subject to review on 1 April 2004, and then every 5 years thereafter.

Instruments purporting to comply with this approval shall be marked NSC No 6/10B/46B and only by persons authorised by the submittor.

The Commission reserves the right to examine any instrument or component of an instrument purporting to comply with this approval.

It is the submittor's responsibility to ensure that all instruments marked with this approval number are constructed as described in the documentation lodged with the Commission and with the relevant Certificate of Approval and Technical Schedule. Failure to comply with this Condition may attract penalties under Section 19B of the National Measurement Act and may result in cancellation or withdrawal of the approval, in accordance with the Commission's Document 106.

The pattern and variants as approved herein or with substitute load cells and/or indicator and in other capacities, shall comply with General Certificate No 6B/0.

Auxiliary devices used with this instrument shall comply with the requirements of General Supplementary Certificate No S1/0/A.

DESCRIPTIVE ADVICE

Pattern: approved 29 March 1999

- A Mettler Toledo model 7560 self-indicating weighing instrument of 60 000 kg maximum capacity.

Variants: approved 29 March 1999

1. In certain other capacities and with up to 10 load cells.
2. With hopper or tank-type load receptors.
3. Of 175 000 kg maximum capacity and with 12 load cells.

Variant: approved 4 May 1999

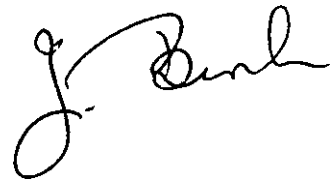
4. In other capacities between 1500 and 14 999 kg.

FILING ADVICE

The documentation for this approval comprises:

Certificate of Approval No 6/10B/46B dated 11 May 1999
Technical Schedule No 6/10B/46B dated 11 May 1999 (incl. Test
Procedure)
Figure 1 dated 11 May 1999

Signed and sealed by a person authorised under Regulation 9 of the National Measurement (Patterns of Measuring Instruments) Regulations to exercise the powers and functions of the Commission under this Regulation.

A handwritten signature in black ink, appearing to be 'J. Burt', written in a cursive style.

TECHNICAL SCHEDULE No 6/10B/46B

Pattern: Mettler Toledo Model 7560 Weighing Instrument.

Submittor: Mettler Toledo Limited
525 Graham Street
Port Melbourne VIC 3207.

1. Description of Pattern

A Mettler Toledo model 7560 self-indicating weighing instrument of 60 000 kg maximum capacity and approved for use with up to 4000 (*) verification scale intervals (VSI).

- (*) Instruments used with more than 3000 VSI shall be provided with wind protection in accordance with clause 4. **Wind Effects** of General Certificate of Approval No 6B/0.

1.1 Basework

The model 7560 basework has the platform fully supported by 8 load cells.

1.2 Load Cells

Mettler Toledo model 0760 (#) ('DigiTol') load cells of 22 700 kg maximum capacity are used. The load cells are also described in the documentation of NSC approval No S252A.

- (#) Two versions of the model 0760 load cells are approved. Those having part number 14002300A are approved with up to 3000 VSI, while those having part number 14002400A are approved with up to 4000 VSI.

1.3 Indicator

A Mettler Toledo model Jaguar digital indicator is used. The indicator is also described in the documentation of NSC approval No S339.

1.4 Verification/Certification Provision

Provision is made for the application of a verification/certification mark.

1.5 Sealing Provision

Provision is made for the calibration adjustments in the indicator to be sealed by means of the method described in the approval documentation for the indicator.

1.6 Markings

Instruments carry the following markings, in the form shown at right:

Manufacturer's mark, or name written in full	Mettler Toledo
Indication of accuracy class	Ⓜ
Maximum capacity	<i>Max</i> kg or t *
Minimum capacity	<i>Min</i> kg or t *
Verification scale interval	<i>e</i> = kg or t *
Maximum subtractive tare	<i>T</i> = - kg or t
Serial number of the instrument
Pattern approval mark for the instrument	NSC No 6/10B/46B
Pattern approval mark for the load cell	NSC No S....
Pattern approval mark for the indicator	NSC No S....

* These markings shall also be shown near each reading face if they are not already located there.

2. Description of Variants

2.1 Variant 1

Other model weighing instruments of the 7000 series in capacities from 15 000 to 149 999 kg, with no less than 4 and with up to 10 Commission-approved load cells.

2.2 Variant 2

Hopper weighing instruments of the 7000 series in capacities from 15 000 to 149 999 kg.

Instruments are either:

- fitted with 3, 4 or 5 Commission-approved load cells (arranged symmetrically to ensure even loading of each cell) where the hopper is a vertical cylindrical or tank-type load receptor directly supported by the load cells; or
- fitted with 4 Commission-approved load cells where the hopper is a non-vertical cylindrical, or other hopper-type load receptor.

Note: Instruments with more than 4 load cells may be acceptable if prior written agreement from the Commission is obtained.

In addition suitable provision must be made for the application of suitable verified masses to the instrument as required for verification and certification purposes. It may be necessary for such masses to be incorporated within the design of the instrument.

2.3 Variant 3

The 7000 series instruments of 150 000 kg capacity or greater with up to 12 load cells.

Instruments may use Mettler Toledo model 0760 ('DigiTol') load cells of 45 000 kg maximum capacity installed in pairs as shown in Figure 1 and approved for use with up to 3000 verification scale intervals. The load cells are also described in the documentation of NSC approval No S252A.

2.4 Variant 4

The 7000 series instruments in capacities from 1499 to 15 000 kg, with no less than 4 Commission-approved load cells in the case of platform instruments, and with no less than 3 Commission-approved load cells in the case of hopper instruments (variant 2).

TEST PROCEDURE

Instruments should be tested in conjunction with any tests specified in the approval documentation for the indicator used, and in accordance with any relevant tests specified in the Inspector's Handbook.

Maximum Permissible Errors at Verification/Certification

The maximum permissible errors for increasing and decreasing loads on initial verification/certification for loads, m , expressed in verification scale intervals, e , are:

- $\pm 0.5 e$ for loads $0 \leq m \leq 500$;
- $\pm 1.0 e$ for loads $500 < m \leq 2\,000$; and
- $\pm 1.5 e$ for loads $2\,000 < m \leq 10\,000$.



National Standards Commission
Notification of Change
Certificate of Approval No 6/10B/46B
Change No 1

The following changes are made to the approval documentation for the

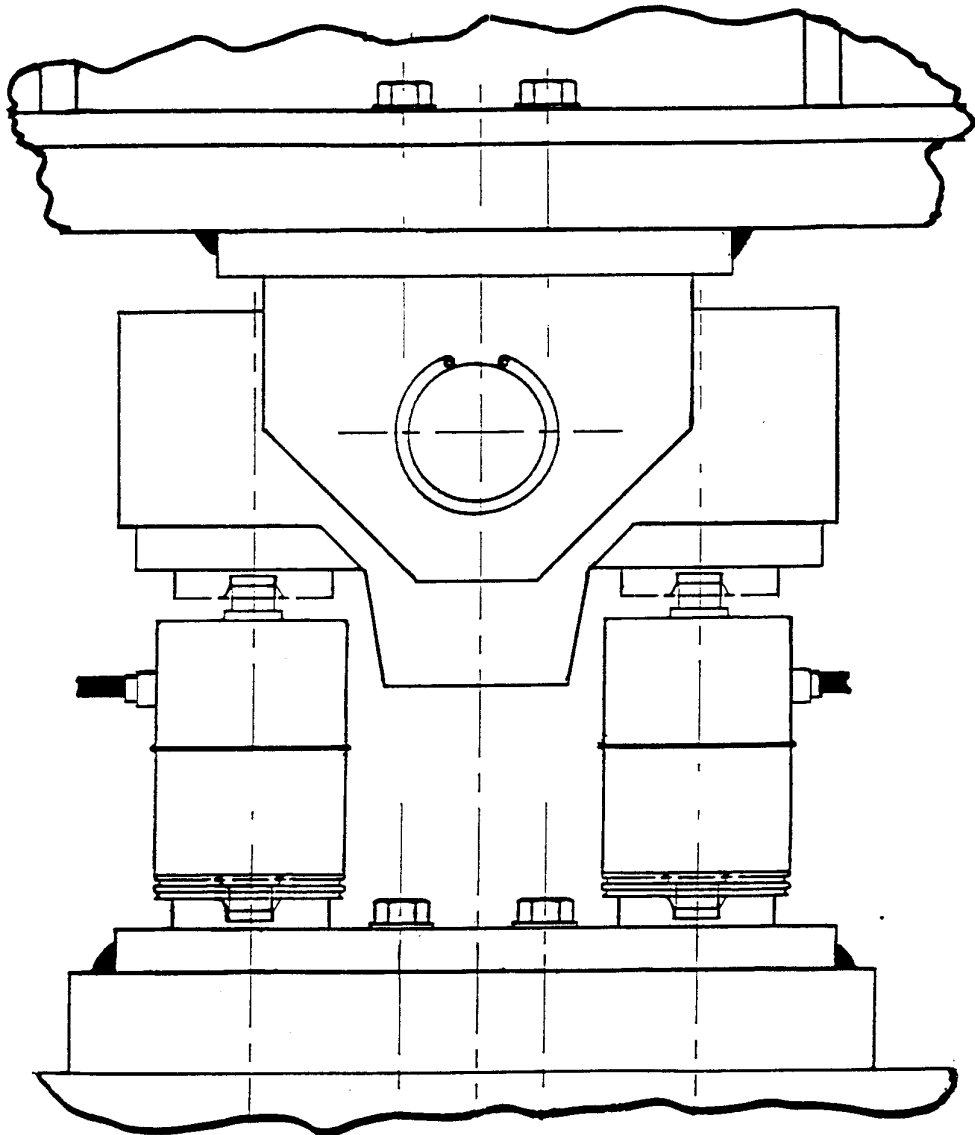
Mettler Toledo Model 7560 Weighing Instrument

submitted by Mettler Toledo Limited
525 Graham Street
Port Melbourne VIC 3207.

- (a) In Certificate of Approval No 6/10B/46B dated 11 May 1999, the description of Variant 1 in the DESCRIPTIVE ADVICE, should be amended to read:
- “In certain other capacities and with up to 16 load cells”.
- (b) In Technical Schedule No 6/10B/46B dated 11 May 1999, clause **2.1 Variant 1** should be amended to read:
- “Other model weighing instruments of the 7000 series in capacities from 15 000 to 149 999 kg, with no less than 4 and with up to 16 Commission-approved load cells.”
- (c) In Certificate of Approval No 6/10B/46B dated 11 May 1999, the description of Variant 3 in the DESCRIPTIVE ADVICE, should be amended to read:
- “In capacities of 150 000 kg and over with up to 16 load cells.”
- (b) In Technical Schedule No 6/10B/46B dated 11 May 1999, clause **2.3 Variant 3** should be amended by replacing the first sentence with the following:
- “The 7000 series instruments of 150 000 kg capacity or greater with up to 16 load cells.”

Signed and sealed by a person authorised under Regulation 63 of the National Measurement (Patterns of Measuring Instruments) Regulations to exercise the powers and functions of the Commission under this Regulation.

FIGURE 6/10B/46B - 1



Showing Load Cells Mounted in Pairs - Variant 3