



Australian Government
**National Measurement
Institute**

Bradfield Road, West Lindfield NSW 2070

Notification of Change
Certificate of Approval No 6/9C/223B
Change No 1

Issued by the Chief Metrologist under Regulation 60
of the
National Measurement Regulations 1999

The following changes are made to the approval documentation for the
Colonial Weighing Model CSC-ZX Weighing Instrument

submitted by Colonial Weighing Australia P/L
5 Sara Grove
Tottenham VIC 3012.

In Certificate of Approval 6/9C/223B dated 31 May 2004;

1. The Condition of Approval referring to the review of the approval should be amended to read:
“This approval becomes subject to review on 1 June **2014**,
and then every 5 years thereafter.”
2. The FILING ADVICE should be amended by adding the following:
“Notification of Change No 1 dated 27 August 2010”

Signed by a person authorised by the Chief Metrologist
to exercise his powers under Regulation 60 of the
National Measurement Regulations 1999.

A handwritten signature in black ink, consisting of a series of loops and flourishes, positioned above a horizontal line.



Australian Government

National Standards Commission

12 Lyonpark Road, North Ryde NSW 2113 Australia

Certificate of Approval

No 6/9C/223B

Issued under Regulation 60
of the
National Measurement Regulations 1999

This is to certify that an approval for use for trade has been granted in respect of the
Colonial Weighing Model CSC-ZX Weighing Instrument

submitted by Colonial Weighing Australia P/L
5 Sara Grove
Tottenham VIC 3012.

NOTE: This Certificate relates to the suitability of the pattern of the instrument for use for trade only in respect of its metrological characteristics. This Certificate does not constitute or imply any guarantee of compliance by the manufacturer or any other person with any requirements regarding safety.

This Certificate is issued upon completion of a review of NSC approval No 6/9C/223A.

CONDITIONS OF APPROVAL

This approval becomes subject to review on 1 June 2009, and then every 5 years thereafter. Instruments purporting to comply with this approval shall be marked NSC No 6/9C/223B and only by persons authorised by the submittor.

It is the submittor's responsibility to ensure that all instruments marked with this approval number are constructed as described in the documentation lodged with the Commission and with the relevant Certificate of Approval and Technical Schedule. Failure to comply with this Condition may attract penalties under Section 19B of the National Measurement Act and may result in cancellation or withdrawal of the approval, in accordance with the Commission's Document NSC P 106.

The Commission reserves the right to examine any instrument or component of an instrument purporting to comply with this approval.

Auxiliary devices used with this instrument shall comply with the requirements of General Supplementary Certificate No S1/0/A.

The pattern as approved herein or with substitute Commission-approved load cells and/or indicators and in other capacities, or with different platform sizes, shall comply with General Certificate No 6B/0.

Note: New instruments manufactured under this approval shall only use load cells and/or indicators with current NSC supplementary certificates.

The values of the performance criteria (maximum number of scale intervals etc.) applicable to the instrument shall be within the limits specified herein and in any approval documentation for the components where they are approved separately.

DESCRIPTIVE ADVICE

Pattern: approved 11 May 2004

- A Colonial Weighing model CSC-ZX self-indicating weighing instrument of 1500 kg maximum capacity.

Variants: approved 11 May 2004

1. In capacities from 150 kg up to 14 999 kg.

Technical Schedule No 6/9C/223B describes the pattern and variant 1.

FILING ADVICE

The documentation for this approval comprises:

Certificate of Approval No 6/9C/223B dated 31 May 2004

Technical Schedule No 6/9C/223B dated 31 May 2004 (incl. Test Procedure)

Figures 1 and 2 dated 31 May 2004

Signed by a person authorised under Regulation 60 of the National Measurement Regulations 1999 to exercise the powers and functions of the Commission under this Regulation.



TECHNICAL SCHEDULE No 6/9C/223B

Pattern: Colonial Weighing Model CSC-ZX Weighing Instrument

Submittor: Colonial Weighing Australia P/L
5 Sara Grove
Tottenham VIC 3012

1. Description of Pattern

A Colonial Weighing model CSC-ZX self-indicating weighing instrument of 1500 kg maximum capacity and approved for use with up to 3000 verification scale intervals.

1.1 Basework

The model CSC-ZX basework (Figure 1) has the load receptor directly supported by load cells fitted with self-aligning supporting feet.

This model basework has nominal dimensions of 1000 x 1500 mm.

If approach ramps are provided care shall be taken to ensure that these do not interfere with the platform.

1.2 Load Cells

Four Kelba model KA1000 C3 load cells of 1000 kg capacity are used mounted as shown in Figure 2. The load cells are described in the documentation of NSC approval No S155B.

1.3 Indicator

A Gedge Systems model GS1650Mk3 digital indicator is used. The indicator is described in the documentation of NSC approval No S193B.

1.4 Markings

Instruments carry the following markings:

Manufacturer's mark, or name written in full	Colonial Weighing
Indication of accuracy class	Ⓜ
Maximum capacity	<i>Max</i> kg *
Minimum capacity	<i>Min</i> kg *
Verification scale interval	<i>e</i> = kg *
Tare capacity (if less than <i>Max</i>)	<i>T</i> = - kg
Serial number of the instrument
Pattern approval mark for the instrument	NSC No 6/9C/223B
Pattern approval mark for the load cells	NSC No ...
Pattern approval mark for the indicator	NSC No ...

* These markings shall also be shown near the display of the result if they are not already located there.

1.5 Verification/Certification Provision

Provision is made for the application of a verification/certification mark.

1.6 Sealing Provision

Provision is made for the calibration adjustments to be sealed as described in the approval documentation for the indicator.

1.7 Levelling

Where instruments are liable to be tilted (i.e. they are not installed in a permanently fixed location) they are provided with adjustable feet and a level indicator. Adjacent to the level indicator is a notice stating 'instrument must be level when in use', or similar wording.

2. Description of Variant 1

In capacities as listed below, provided that instruments comply with General Certificate No 6B/0:

- from 150 kg up to 1499 kg; and
- from 1500 kg up to 14 999 kg.

TEST PROCEDURE

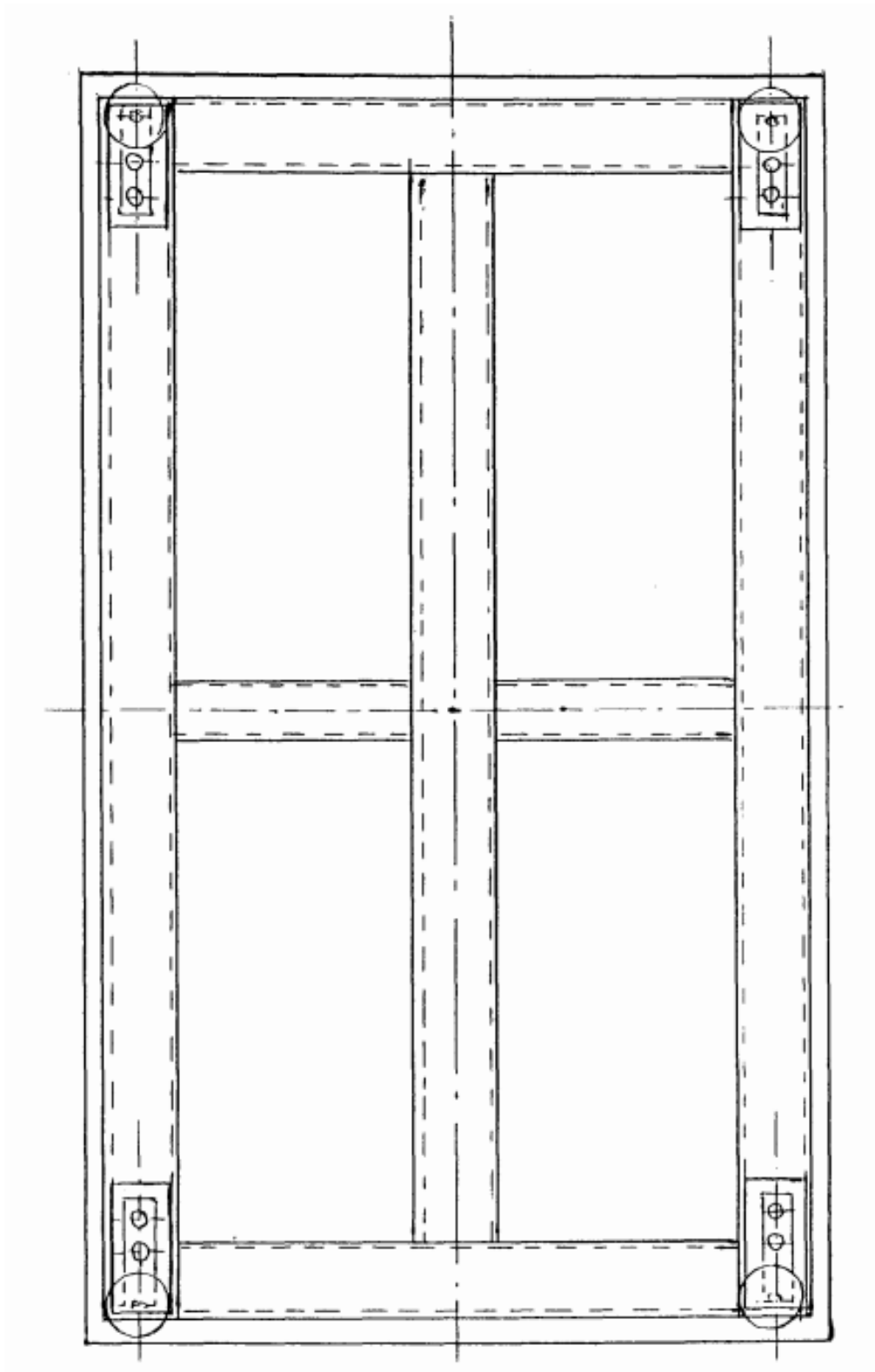
Instruments should be tested in accordance with any relevant tests specified in the Uniform Test Procedures.

Maximum Permissible Errors at Verification/Certification

For single range instruments, the maximum permissible errors for increasing and decreasing loads on initial verification/certification for loads, m , expressed in verification scale intervals, e , are:

- $\pm 0.5e$ for loads $0 \leq m \leq 500$;
- $\pm 1.0e$ for loads $500 < m \leq 2\,000$; and
- $\pm 1.5e$ for loads $2\,000 < m \leq 10\,000$.

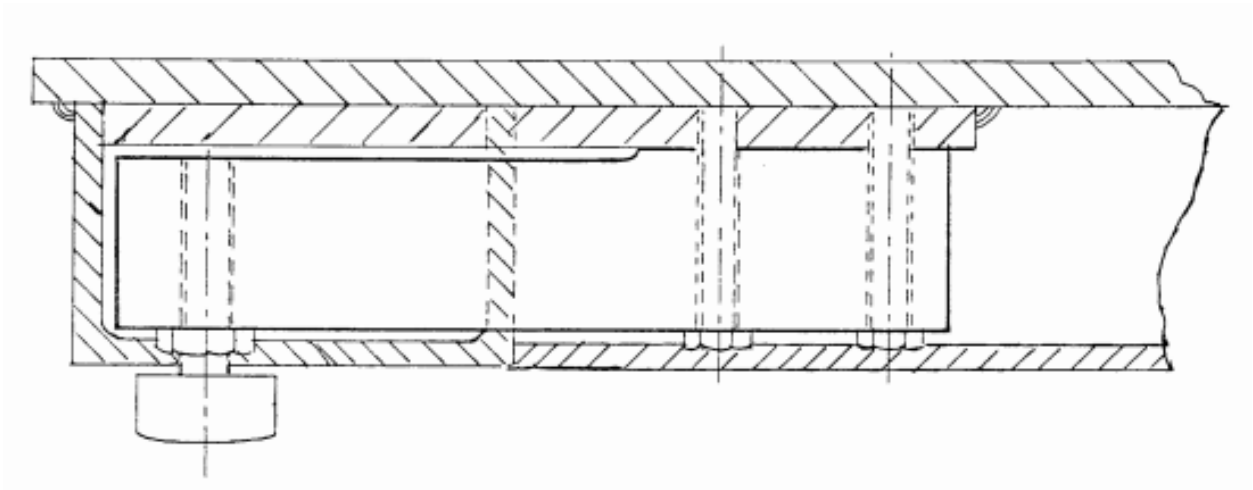
FIGURE 6/9C/223B - 1



Colonial Weighing Model CSC-ZX Basework

6/9C/223B
31 May 2004

FIGURE 6/9C/223B – 2



Colonial Weighing Model CSC-ZX – Load Cell Mounting