



**Australian Government**

**National Measurement  
Institute**

Bradfield Road, West Lindfield NSW 2070

## **Certificate of Approval**

### **NMI 6/18/31**

Issued by the Chief Metrologist under Regulation 60  
of the  
National Measurement Regulations 1999

This is to certify that an approval for use for trade has been granted in respect of the instruments herein described.

A'Asia Scales Model OHT 3000 Overhead-track Weighing Instrument

submitted by           Australasia Scales Pty Ltd  
                                  (formerly A'Asia Scales Service Pty Ltd)  
                                  1, 944 Nudgee Road  
                                  Banyo    QLD    4014

**NOTE:** This Certificate relates to the suitability of the pattern of the instrument for use for trade only in respect of its metrological characteristics. This Certificate does not constitute or imply any guarantee of compliance by the manufacturer or any other person with any requirements regarding safety.

This approval has been granted with reference to document NMI R 76, *Non-automatic weighing instruments, Parts 1 and 2*, dated July 2004.

This approval becomes subject to review on **1/08/15**, and then every 5 years thereafter.

#### **DOCUMENT HISTORY**

<b>Rev</b>	<b>Reason/Details</b>	<b>Date</b>
0	Pattern and variant 1 approved – interim certificate issued	6/07/98
1	Pattern and variant 1 – certificate issued	20/07/98
2	Pattern and variant 1 reviewed & amended – change notice issued	8/12/04
3	Submittor name change – change notice issued	17/01/06
4	Pattern and variant 1 reviewed & updated – certificate issued	24/11/11

## CONDITIONS OF APPROVAL

### General

Instruments purporting to comply with this approval shall be marked with approval number 'NMI (or NSC) 6/18/31' and only by persons authorised by the submittor.

It is the submittor's responsibility to ensure that all instruments marked with this approval number are constructed as described in the documentation lodged with the National Measurement Institute (NMI) and with the relevant Certificate of Approval and Technical Schedule. Failure to comply with this Condition may attract penalties under Section 19B of the National Measurement Act and may result in cancellation or withdrawal of the approval, in accordance with document NMI P 106.

Auxiliary devices used with this instrument shall comply with the requirements of General Supplementary Certificates No S1/0/A or No S1/0B.

The pattern as approved herein or with substitute indicator, shall comply with General Certificate of Approval No 6B/0.

Note: New instruments manufactured under this approval shall only use indicators with current supplementary certificates.

Signed by a person authorised by the Chief Metrologist to exercise his powers under Regulation 60 of the *National Measurement Regulations 1999*.

A handwritten signature in black ink, consisting of a series of loops and a long horizontal stroke at the end.

TECHNICAL SCHEDULE No 6/18/31

**1. Description of Pattern** **approved on 6/07/98**

An A'Asia Scales model OHT 3000 overhead-track weighing instrument of 600 kg maximum capacity with a verification scale interval of 0.5 kg.

May also be known as "Australasia Scales" instruments of the same model.

**1.1 Trackwork**

The model OHT 3000 trackwork (Figure 1) has the weigh-rail of 1200 mm in length suspended from two load cells.

**1.2 Load Cells**

Two Kelba model KA1000 C3 load cells of 1000 kg capacity are used and mounted as shown in Figure 1. Note that only this make, model and capacity of load cells shall be used. The load cells are also described in the documentation of approval NSC S155B.

**1.3 Indicator**

A Ranger model 9500 digital indicator is used. The indicator is also described in the documentation of approval NSC S304.

A Rinstrum model 320 digital indicator may also be used. The indicator is also described in the documentation of approval NSC S420.

**1.4 Sealing Provision**

Provision is made for the calibration adjustments in the indicator to be sealed as described in the approval documentation for the indicator used.

**1.5 Descriptive Markings**

Instruments are marked with the following data, together in one location, in the form shown at right:

Manufacturer's mark, or name written in full	.....
Indication of accuracy class	Ⓜ
Maximum capacity	<i>Max</i> ..... kg #1
Minimum capacity	<i>Min</i> ..... kg #1
Verification scale interval	<i>e</i> = ..... kg #1
Serial number of the instrument	.....
Serial numbers of the load cells	..... #2
Pattern approval mark for the instrument	NMI (or NSC) 6/18/31
Pattern approval mark for the indicator	S.....
Pattern approval mark for the load cells	S.....

#1 These markings are also shown near the display of the result if they are not already located there.

#2 Alternatively, these may be marked adjacent to the verification mark.

## **1.6 Verification Provision**

Provision is made for the application of a verification mark.

## **2. Description of Variant 1**

**approved on 6/07/98**

With a maximum capacity of 300 kg and with a verification scale interval of 0.2 kg.

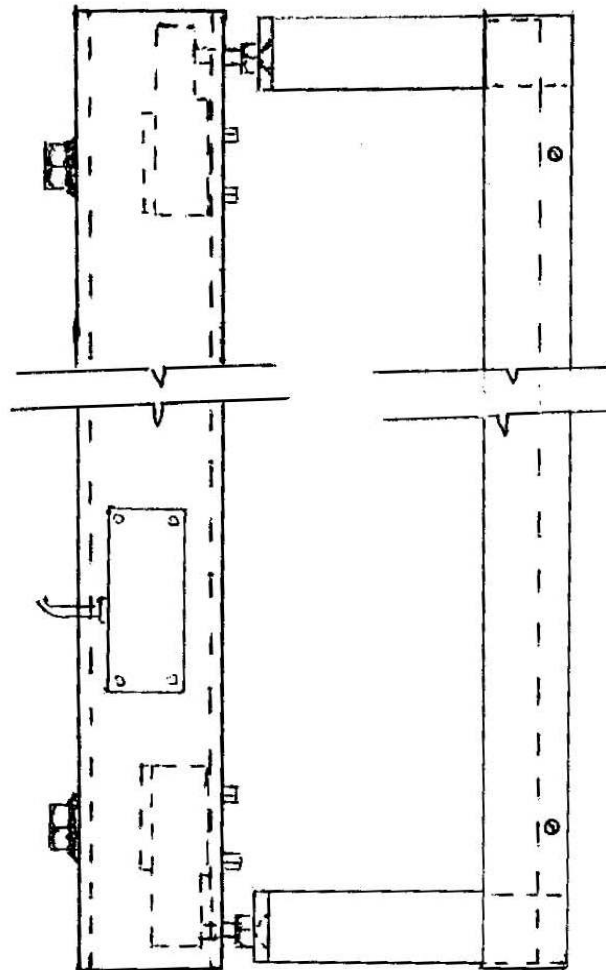
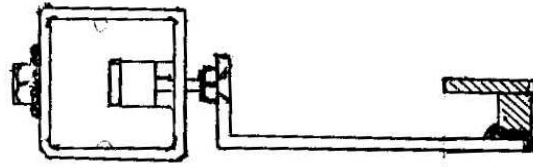
### **TEST PROCEDURE No 6/18/31**

Instruments shall be tested in accordance with any relevant tests specified in the National Instrument Test Procedures.

### **Maximum Permissible Errors**

The maximum permissible errors are specified in Schedule 1 of the *National Trade Measurement Regulations 2009*.

FIGURE 6/18/31 – 1



A'Asia Scales Model OHT 3000 Trackwork

~ End of Document ~