



Australian Government
**National Measurement
Institute**

Bradfield Road, West Lindfield NSW 2070

Cancellation
Certificate of Approval No 6/18/27A

Issued by the Chief Metrologist under Regulation 60
of the
National Measurement Regulations 1999

This is to certify that the approval for use for trade granted in respect of the
Colonial Weighing Model CSC-TS Overhead-track Weighing Instrument

submitted by Colonial Weighing Australia P/L
5 Sara Grove
Tottenham VIC 3012

has been cancelled in respect of new instruments as from 1 October 2010.

Signed by a person authorised by the Chief Metrologist
to exercise his powers under Regulation 60 of the
National Measurement Regulations 1999.

A handwritten signature in black ink, consisting of stylized cursive letters, positioned above a horizontal line.

National Standards Commission



Certificate of Approval

No 6/18/27A

Issued under Regulation 9
of the
National Measurement (Patterns of Measuring Instruments) Regulations

This is to certify that an approval for use for trade has been granted in respect of the

Colonial Weighing Model CSC-TS Overhead-track weighing Instrument

submitted by Colonial Weighing Australia Pty Ltd
5 Sara Grove
Tottenham VIC 3012.

NOTE: This Certificate relates to the suitability of the pattern of the instrument for use for trade only in respect of its metrological characteristics. This Certificate does not constitute or imply any guarantee of compliance by the manufacturer or any other person with any requirements regarding safety.

This Certificate is issued upon completion of a review of NSC approval No 6/18/27.

CONDITIONS OF APPROVAL



This approval is subject to review on 1 June 2002 and then every 5 years thereafter.

Instruments purporting to comply with this approval shall be marked NSC No 6/18/27A and only by persons authorised by the submittor.

It is the submittor's responsibility to ensure that all instruments marked with this approval number are constructed as described in the documentation lodged with the Commission and with the relevant Certificate of Approval and Technical Schedule. Failure to comply with this Condition may attract penalties under Section 19B of the National Measurement Act and may result in cancellation or withdrawal of the approval, in accordance with the Commission's Document 106.

The Commission reserves the right to examine any instrument or component of an instrument purporting to comply with this approval.

Auxiliary devices used with this instrument shall comply with the requirements of General Supplementary Certificate No S1/0/A.



DESCRIPTIVE ADVICE

Pattern: approved 13 May 1997

- A Colonial Weighing model CSC-TS overhead-track weighing instrument of 600 kg maximum capacity.

Variant: approved 13 May 1997

1. Of 1000 kg maximum capacity.

Technical Schedule No 6/18/27A describes the pattern and variant 1.

FILING ADVICE

The documentation for this approval comprises:

Certificate of Approval No 6/18/27A dated 10 June 1997
Technical Schedule No 6/18/27A dated 10 June 1997 (incl. Test
Procedure)
Figure 1 dated 10 June 1997

Signed and sealed by a person authorised under Regulation 9 of the National Measurement (Patterns of Measuring Instruments) Regulations to exercise the powers and functions of the Commission under this Regulation.

National Standards Commission

TECHNICAL SCHEDULE No 6/18/27A

Pattern: Colonial Weighing Model CSC-TS Overhead-track Weighing Instrument.

Submitter: Colonial Weighing Australia Pty Ltd
5 Sara Grove
Tottenham VIC 3012.

1. Description of Pattern

A Colonial Weighing model CSC-TS overhead-track weighing instrument of 600kg maximum capacity and approved for use with up to 3000 verification scale intervals.

1.1 Trackwork

The model CSC trackwork (Figure 1) has the weigh-rail from 300 to 1200mm long suspended from two load cells.

1.2 Load Cells

Two Kelba model KA-1000-C3 load cells of 1000 kg capacity are used and mounted as shown in Figure 1. Note that only this make, model and capacity of load cells shall be used.

1.3 Indicator

A Gedge model GS1650 Mk3 digital indicator is used. The indicator is also described in the documentation of NSC approval No S193B.

1.4 Sealing Provision

Provision is made for the calibration adjustments to be sealed by means of either sealing screws or destructible labels on the front and rear of the indicator.

1.5 Verification/Certification Provision

Provision is made for the application of a verification/certification mark.

1.6 Markings

Instruments shall carry the following markings, in the form shown at right:

Manufacturer's mark, or name written in full	
Indication of accuracy class	Ⓜ
Maximum capacity	Max kg *
Minimum capacity	Min kg *
Verification scale interval	e = kg *
Maximum subtractive tare	T = - kg
Serial number of the instrument	
Serial numbers of the load cells (#)	
Pattern approval mark for the instrument	NSC No 6/18/27A
Pattern approval mark for the indicator	NSC No S

* These markings shall also be shown near the display of the result if they are not already located there.

Alternatively, these may be marked adjacent to the verification mark.

2. Description of Variant 1

With a maximum capacity of 1000 kg and approved for use with up to 3000 verification scale intervals.

TEST PROCEDURE

Instruments should be tested in conjunction with any tests specified in the approval documentation for the indicator used, and in accordance with any relevant tests specified in the Inspector's Handbook.

Maximum Permissible Errors at Verification/Certification

The maximum permissible errors for increasing and decreasing loads on initial verification/certification for loads, m , expressed in verification scale intervals, e , are:

- $\pm 0.5 e$ for loads $0 \leq m \leq 500$;
- $\pm 1.0 e$ for loads $500 < m \leq 2\,000$; and
- $\pm 1.5 e$ for loads $2\,000 < m \leq 10\,000$.



Australian Government

**National Measurement
Institute**

12 Lyonpark Road, North Ryde NSW 2113

Notification of Change
Certificate of Approval No 6/18/27A
Change No 1

Issued by the Chief Metrologist under Regulation 60
of the
National Measurement Regulations 1999

The following changes are made to the approval documentation for the
Colonial Weighing Model CSC-TS Overhead-track weighing Instrument
submitted by Colonial Weighing Australia Pty Ltd
5 Sara Grove
Tottenham VIC 3012.

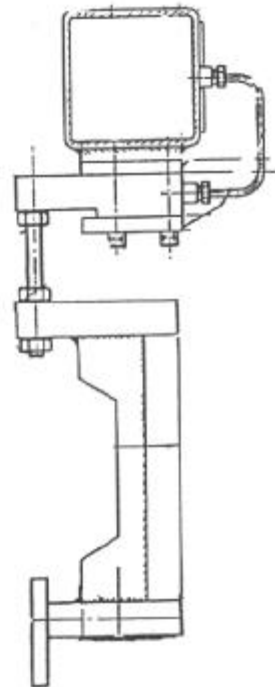
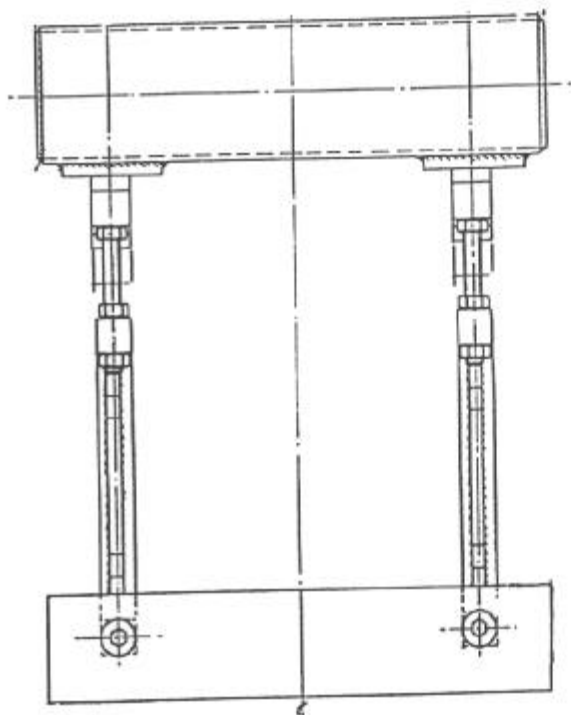
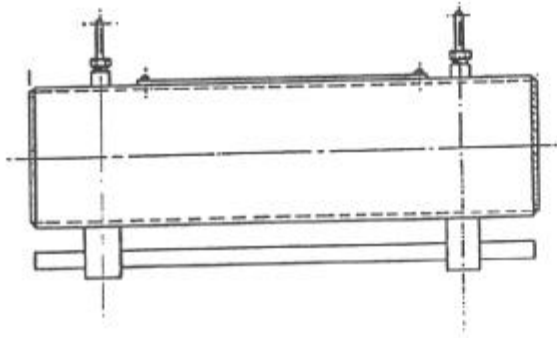
In Certificate of Approval No 6/18/27A dated 10 June 1997;

1. The Condition of Approval referring to the review of the approval should be amended to read:
"This approval becomes subject to review on 1 June 2009, and then every 5 years thereafter."
2. The following Condition of Approval should be added:
"The pattern as approved herein or with substitute indicator, shall comply with General Certificate of Approval No 6B/0.
Note: New instruments manufactured under this approval shall only use indicators with current supplementary certificates."

Signed by a person authorised by the Chief Metrologist
to exercise his powers under Regulation 60 of the
National Measurement Regulations 1999.

A handwritten signature in black ink, appearing to be 'J. G. T.', located at the bottom right of the page.

FIGURE 6/18/27A - 1



Model CSC-TS Trackwork