



Australian Government
**National Measurement
Institute**

Bradfield Road, West Lindfield NSW 2070

Cancellation
Certificate of Approval No 6/18/26A

Issued by the Chief Metrologist under Regulation 60
of the
National Measurement Regulations 1999

This is to certify that the approval for use for trade granted in respect of the
Queensland Weighing Machines Model OHT Overhead Weighing Instrument
submitted by Queensland Weighing Machines Pty Ltd
45 Wentworth Place
Banyo QLD 4014

has been cancelled in respect of new instruments as from 1 February 2011.

Signed by a person authorised by the Chief Metrologist
to exercise his powers under Regulation 60 of the
National Measurement Regulations 1999.

A handwritten signature in black ink, consisting of a series of loops and a long horizontal stroke at the bottom.



National Standards Commission

Certificate of Approval

No 6/18/26A

Issued under Regulation 9
of the
National Measurement (Patterns of Measuring Instruments) Regulations

This is to certify that an approval for use for trade has been granted in respect of the

Queensland Weighing Machines Model OHT Overhead Weighing Instrument

submitted by Queensland Weighing Machines Pty Ltd
45 Wentworth Place
Banyo QLD 4014.

NOTE: This Certificate relates to the suitability of the pattern of the instrument for use for trade only in respect of its metrological characteristics. This Certificate does not constitute or imply any guarantee of compliance by the manufacturer or any other person with any requirements regarding safety.

This Certificate is issued upon completion of a review of NSC approval No 6/18/26.

CONDITIONS OF APPROVAL

This approval becomes subject to review on 1 April 2004, and then every 5 years thereafter.

Instruments purporting to comply with this approval shall be marked NSC No 6/18/26A and only by persons authorised by the submittor.

It is the submittor's responsibility to ensure that all instruments marked with this approval number are constructed as described in the documentation lodged with the Commission and with the relevant Certificate of Approval and Technical Schedule. Failure to comply with this Condition may attract penalties under Section 19B of the National Measurement Act and may result in cancellation or withdrawal of the approval, in accordance with the Commission's Document 106.

The Commission reserves the right to examine any instrument or component of an instrument purporting to comply with this approval.

Auxiliary devices used with this instrument shall comply with the requirements of General Supplementary Certificate No S1/0/A.



Alternative Commission-approved indicators may be used in which case instruments shall comply with General Certificate No 6B/0.

DESCRIPTIVE ADVICE

Pattern: approved 11 March 1999

- A Queensland Weighing Machines model OHT overhead-track weighing instrument of 600 kg maximum capacity.

Technical Schedule No 6/18/26A describes the pattern.

FILING ADVICE

The documentation for this approval comprises:

Certificate of Approval No 6/18/26A dated 12 August 1999

Technical Schedule No 6/18/26A dated 12 August 1999 (incl. Test Procedure)

Figures 1 and 2 dated 12 August 1999

Signed and sealed by a person authorised under Regulation 9 of the National Measurement (Patterns of Measuring Instruments) Regulations to exercise the powers and functions of the Commission under this Regulation.

A handwritten signature in black ink, appearing to read 'J. Bush', written in a cursive style.

TECHNICAL SCHEDULE No 6/18/26A

Pattern: Queensland Weighing Machines Model OHT Overhead Weighing Instrument.

Submittor: Queensland Weighing Machines Pty Ltd
45 Wentworth Place
Banyo QLD 4014.

1. Description of Pattern

A Queensland Weighing Machines model OHT overhead-track weighing instrument of 600 kg maximum capacity and approved for use with up to 3000 verification scale intervals.

1.1 Trackwork

The model OHT (Figure 1) has the weigh-rail of up to 1200 mm in length suspended from two load cells.

1.2 Load Cells

Two Kelba model KA1000 load cells of 1000 kg capacity are used and mounted as shown in Figure 2. These load cells are also described in the documentation of NSC approval No S155B. Note that only this make, model and capacity of load cells shall be used.

1.3 Indicator

An A & D Mercury model AD-4328 digital indicator is used. The indicator is also described in the documentation of NSC approval No S343.

1.4 Sealing Provision

Provision is made for the calibration adjustments to be sealed by means of the method described in the approval documentation for the indicator.

1.5 Verification/Certification Provision

Provision is made for the application of a verification/certification mark.

1.6 Markings

Instruments carry the following markings, in the form shown at right:

| | |
|--|------------------|
| Manufacturer's mark, or name written in full | QWM |
| Indication of accuracy class | Ⓜ |
| Maximum capacity | Max kg * |
| Minimum capacity | Min kg * |
| Verification scale interval | $e =$ kg * |
| Serial number of the instrument | |
| Pattern approval mark for the instrument | NSC No 6/18/26A |
| Pattern approval mark for the indicator | NSC No S |

- * These markings shall also be shown near the display of the result if they are not already located there.

TEST PROCEDURE

Instruments should be tested in conjunction with any tests specified in the approval documentation for the indicator used, and in accordance with any relevant tests specified in the Inspector's Handbook.

Maximum Permissible Errors at Verification/Certification

The maximum permissible errors for increasing and decreasing loads on initial verification/certification for loads, m , expressed in verification scale intervals, e , are:

- $\pm 0.5 e$ for loads $0 \leq m \leq 500$;
- $\pm 1.0 e$ for loads $500 < m \leq 2\,000$; and
- $\pm 1.5 e$ for loads $2\,000 < m \leq 10\,000$.

6/18/26A
20 October 2004



Australian Government
**National Measurement
Institute**

12 Lyonpark Road, North Ryde NSW 2113

Notification of Change
Certificate of Approval No 6/18/26A
Change No 1

Issued by the Chief Metrologist under Regulation 60
of the
National Measurement Regulations 1999

The following changes are made to the approval documentation for the
Queensland Weighing Machines Model OHT Overhead Weighing Instrument
submitted by Queensland Weighing Machines Pty Ltd
45 Wentworth Place
Banyo QLD 4014.

In Certificate of Approval No 6/18/26A dated 12 August 1999;

1. The Condition of Approval referring to the review of the approval should be amended to read:
“This approval becomes subject to review on 1 April 2009, and then every 5 years thereafter.”
2. The Condition of Approval referring to complying with General Certificate No 6B/0 when using alternative approved indicators should be amended by adding the following note:
“Note: New instruments manufactured under this approval shall only use indicators with current supplementary certificates.”

Signed by a person authorised by the Chief Metrologist
to exercise his powers under Regulation 60 of the
National Measurement Regulations 1999.

A handwritten signature in black ink, appearing to be 'J. H. T.', written in a cursive style.

FIGURE 6/18/26A - 1

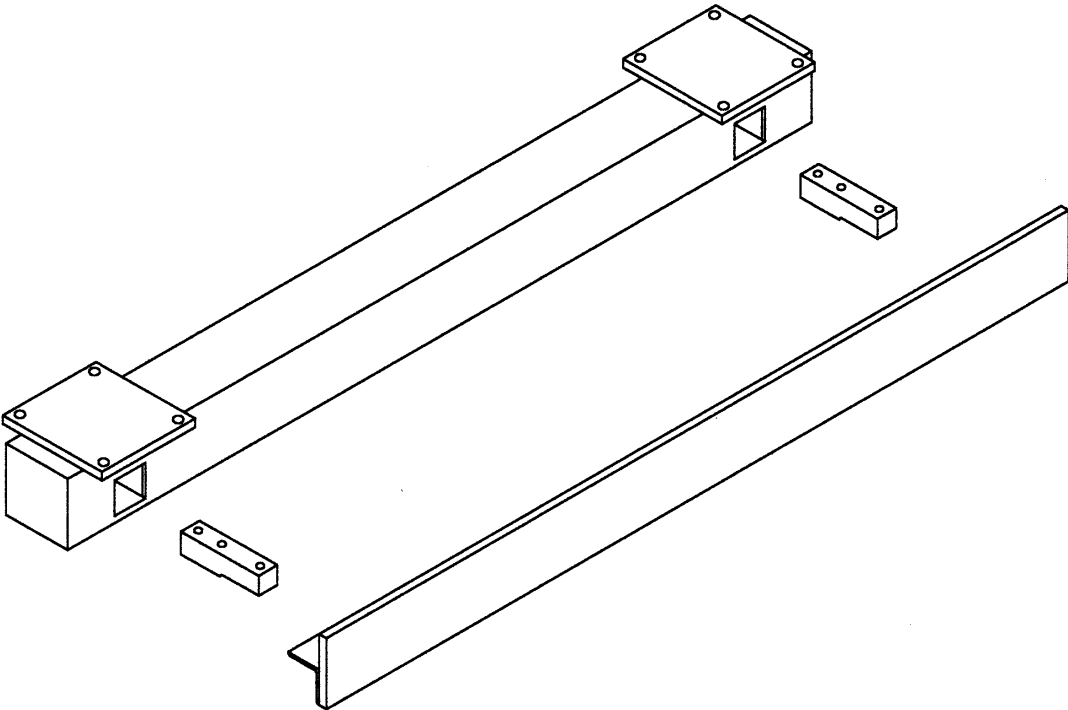
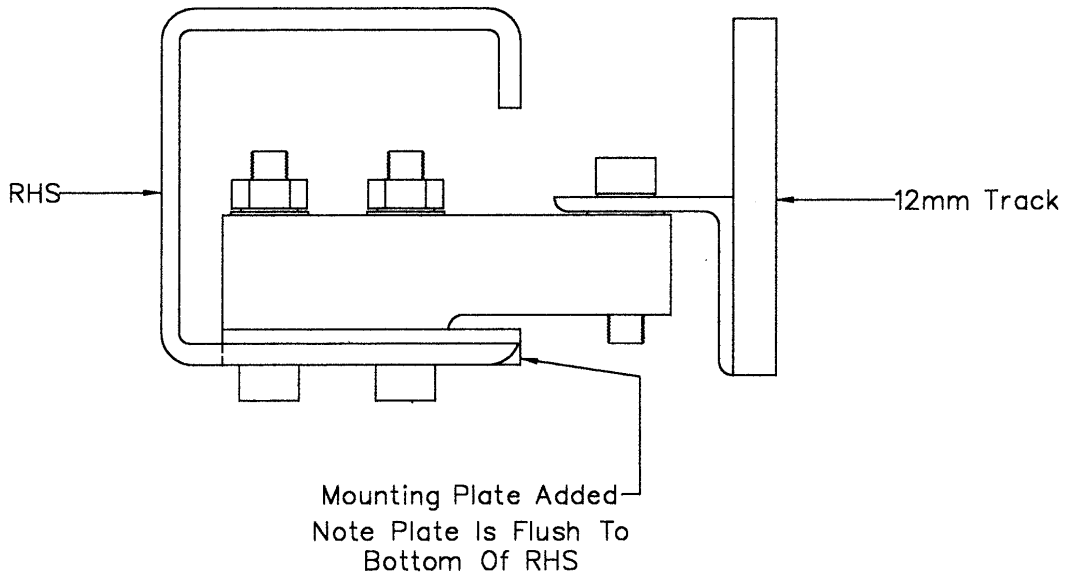


FIGURE 6/18/26A - 2



Showing Load Cell Mounting