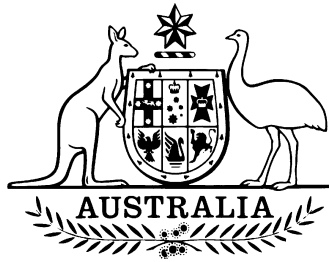


5/6A/80A
14 November 2001



National Standards Commission

12 Lyonpark Road, North Ryde NSW

Cancellation Certificate of Approval

No 5/6A/80A

Issued under Regulation 60
of the
National Measurement Regulations 1999

This is to certify that the approval for use for trade granted in respect of the

Gilbarco Model T095AS700 Driveway Flowmeter

submitted by Gilbarco Aust. Ltd
12-38 Talavera Road
North Ryde NSW 2113

has been cancelled in respect of new instruments as from 1 December 2001.

Signed by a person authorised under Regulation 60
of the National Measurement Regulations 1999 to
exercise the powers and functions of the Commission
under this Regulation.



National Standards Commission



Certificate of Approval

No 5/6A/80A

Issued under Regulation 9
of the
National Measurement (Patterns of Instruments) Regulations

This is to certify that an approval for use for trade has been granted in respect of the

Gilbarco Model T095AS700 Driveway Flowmeter

submitted by Gilbarco Aust. Ltd
12-38 Talavera Road
North Ryde NSW 2113.

This Certificate is issued upon completion of a review of NSC approval No 5/6A/80.

Signed and sealed by a person authorised under
Regulation 9 of the National Measurement
(Patterns of Instruments) Regulations to exercise
the powers and functions of the Commission under
this Regulation.

A handwritten signature in black ink, appearing to be 'J. Berry' or similar, written in a cursive style.

CONDITIONS OF APPROVAL

This approval is subject to review on or after 1/7/95.

This approval expires in respect of new instruments on 1/7/96.

Instruments purporting to comply with this approval shall be marked NSC No 5/6A/80A and only by persons authorised by the submittor.

It is the submittor's responsibility to ensure that all instruments marked with this approval number are constructed as described in the drawings and specifications lodged with the Commission and with the relevant Certificate of Approval and Technical Schedule. Failure to comply with this Condition may attract penalties under Section 19B of the National Measurement Act and may result in cancellation or withdrawal of the approval, in accordance with the Commission's Document 106.

The Commission reserves the right to examine any instrument or component of an instrument purporting to comply with this approval.

DESCRIPTIVE ADVICE

Pattern: approved 5/6/90

- A Gilbarco model T095AS700 driveway flowmeter.

Variant: approved 5/6/90

1. Other models and in configurations as listed in Table 1.

Technical Schedule No 5/6A/80A describes the pattern and variant 1.

FILING ADVICE

The documentation for this approval comprises:

Certificate of Approval No 5/6A/80A dated 27/8/90
Technical Schedule No 5/6A/80A dated 27/8/90 (incl. Table 1 and Test Procedure)
Figures 1 to 8 dated 27/8/90



National Standards Commission

TECHNICAL SCHEDULE No 5/6A/80A

Pattern: Gilbarco Model T095AS700 Driveway Flowmeter.

Submittor: Gilbarco Aust. Ltd
12-38 Talavera Road
North Ryde NSW 2113.

1. Description of Pattern

A Gilbarco model T095AS700 driveway flowmeter (Figure 1) approved for use in either locally or remotely authorised applications.

1.1 Features

The model T095AS700 has the following components or features (Table 1):

- A Dresser-Wayne hydraulic system including a pump with integral gas separator (Figures 2 and 3).
- A Dresser-Wayne model P6521 2-piston meter (Figure 4) approved for use up to 50 L/min.
- A Gilbarco Electroline-type computing indicator with a maximum unit price of 999.9 c/L. A "non-volatile" adaptor may be fitted to the display module to retain transaction data in the event of a power failure.
- An optional preset facility, using a flow control valve which is electronically controlled by the Electroline indicator. The instrument may be fitted with a purchaser-operated preset control or the preset facility may be set via the vendor's console.
- Any Commission-approved ZVA nozzle.

1.2 Sealing and Verification Provision

Provision is made for the application of a verification mark. The meter calibration is sealed.

1.3 Markings

Instruments are marked with the following data, together in one location:

Manufacturer's name or mark	
Model number	
Serial number	
NSC approval number	5/6A/80A
Maximum flow rate L/min
Minimum flow rate L/min
Liquid temperature range	5°C to 40°C
Maximum operating pressure kPa
Approved for use with (products)

2. Description of Variant 1

Other models and in configurations as listed in Table 1 including:

- As dual driveway flowmeters (Figures 5, 6 and 7);
- For use with distillate in which case a gas detection system is mandatory. The system comprises either a gas detection and flow control valve or a gas detection pilot valve and flow control valve (Figure 8).
- With the hydraulic system having the pump separate to the gas separator (Figures 6 and 7).

TEST PROCEDURE

Instruments should be tested in accordance with any tests included in the approval documentation for the control console (where used), and in accordance with any relevant tests specified in the Inspector's Handbook.

Maximum Permissible Errors at Verification/Certification

The maximum permissible error applied during a verification test from normal flow rate to the minimum flow rate specified in the Certificate of Approval or Technical Schedule is $\pm 0.3\%$.

TABLE 1

Model Number	Notes	Approved Products
T090**605	#	P or D
T091**605	#	P or D
T095**700		P
T096**700		P
T095**EPI		P
T095**EPI		P

** Any model number may include a variety of alphabetic codes.

A gas detection system is mandatory for products other than petrol.

P Petrol

D Distillate

Approved Models and Capabilities

National Standards Commission



Notification of Change Certificate of Approval No 5/6A/80A Change No 1

The following changes are made to the approval documentation for the

Gilbarco Model T095AS700 Driveway Flowmeter

submitted by Gilbarco Aust. Ltd
 12-38 Talavera Road
 North Ryde NSW 2113.

In Certificate of Approval No 5/6A/80A dated 27 August 1990;

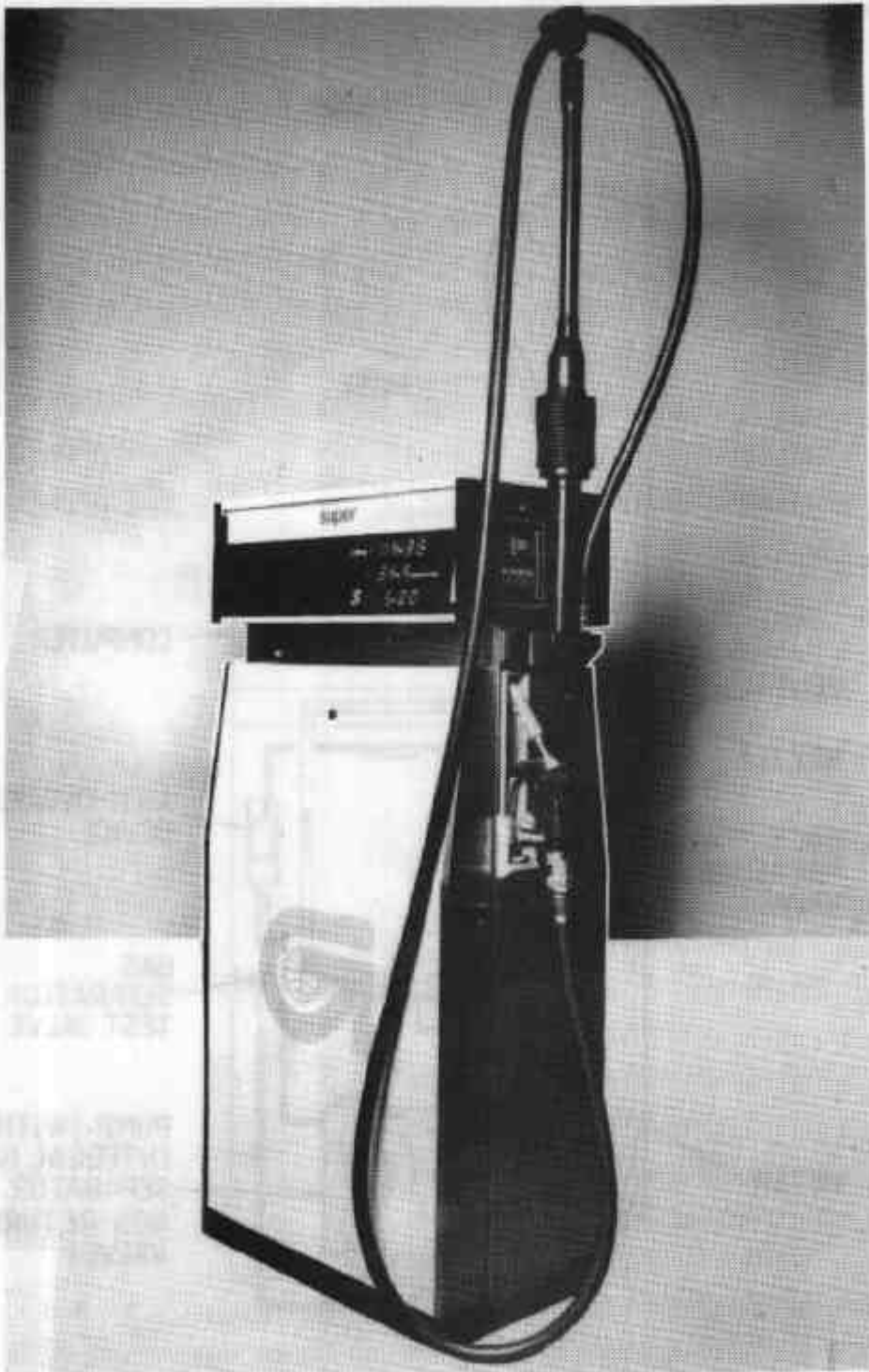
1. The Condition of Approval referring to the review of the approval should be amended to read:

 This approval becomes subject to review on 1 July 1995, and then every 5 years thereafter.
2. The Condition of Approval referring to the expiry of the approval should be deleted.

Signed and sealed by a person authorised under Regulation 9 of the National Measurement (Patterns of Instruments) Regulations to exercise the powers and functions of the Commission under this Regulation.

A handwritten signature in black ink, appearing to be 'J. W. ...', written in a cursive style.

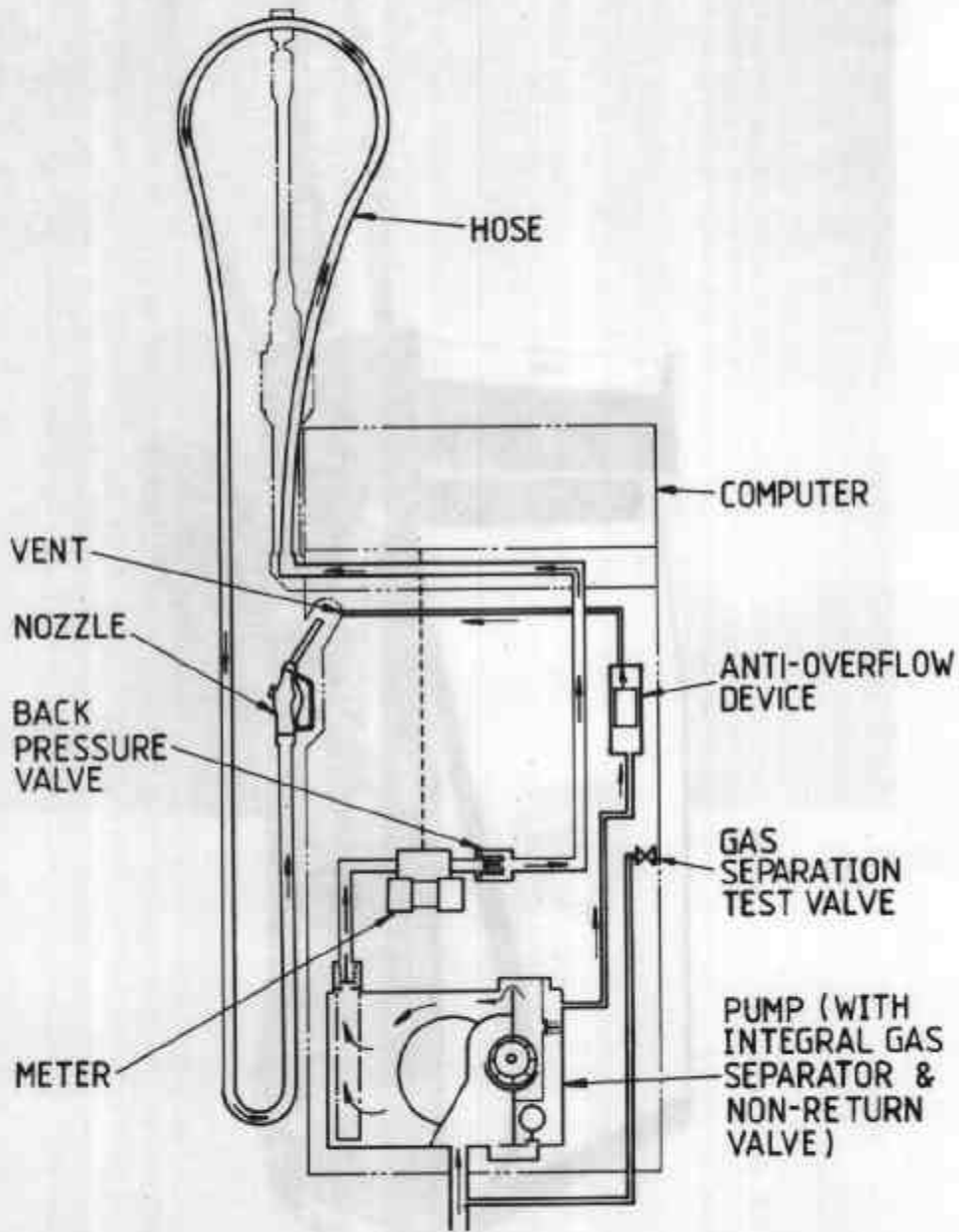
FIGURE 5/6A/80A - 1



Gilbarco Model T095AS700 Driveway Flowmeter

5/6A/80A
27/B/90

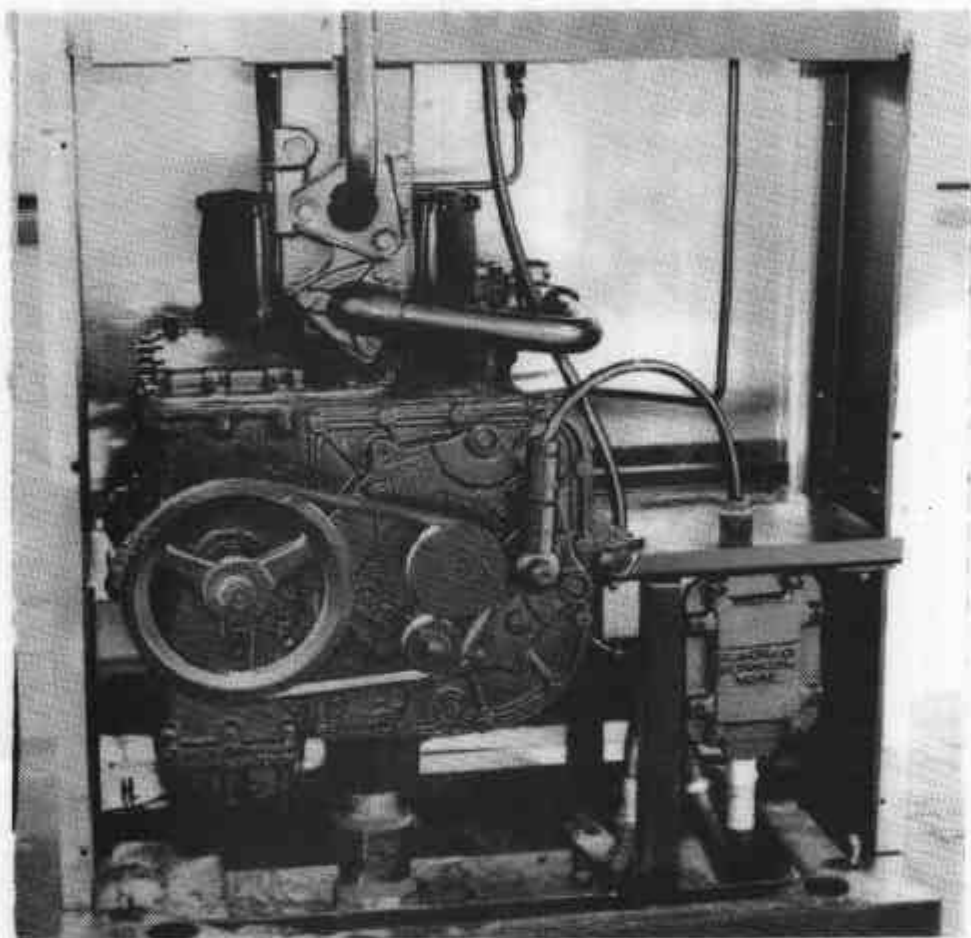
FIGURE 5/6A/80A - 2



Typical Hydraulic Arrangement
(Petrol)

5/6A/80A
27/8/90

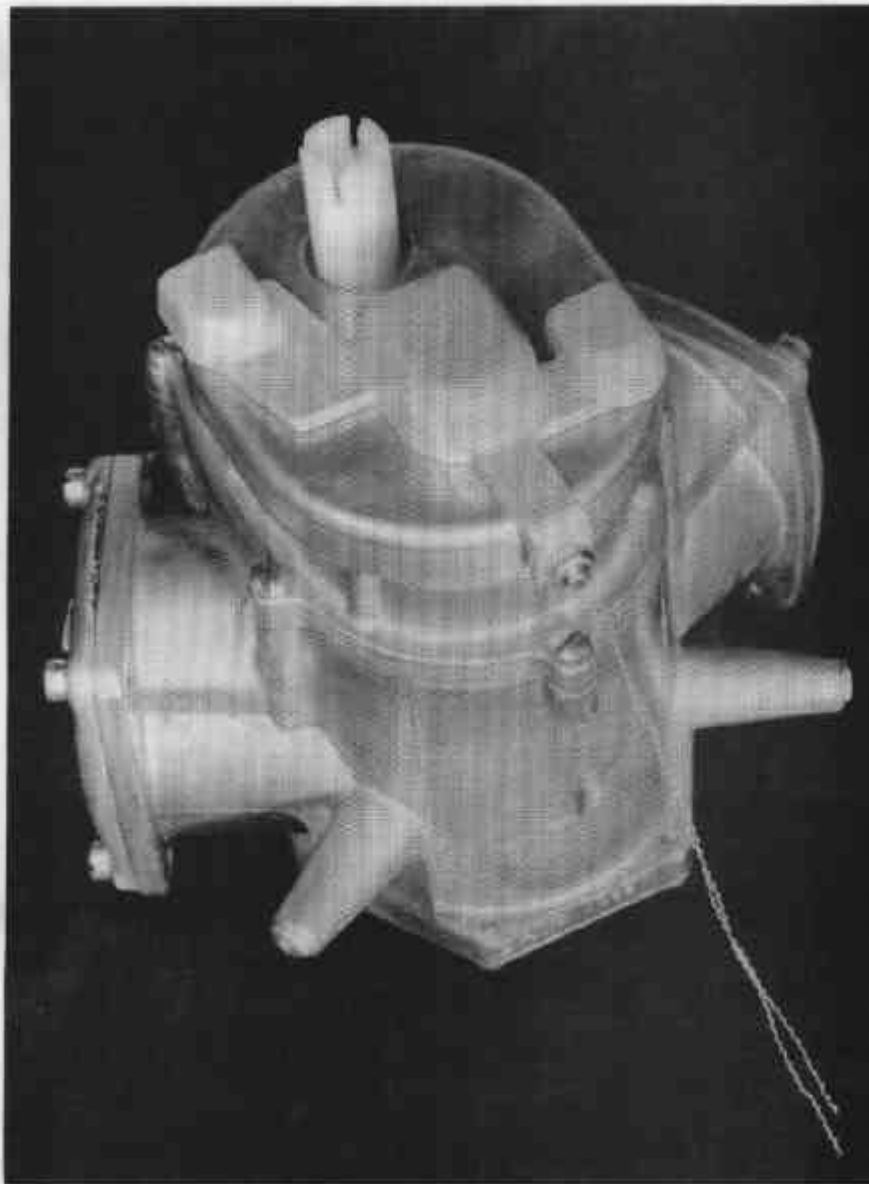
FIGURE 5/6A/80A - 3



Showing Single Hydraulics
(Integral Pump & Gas Separator)

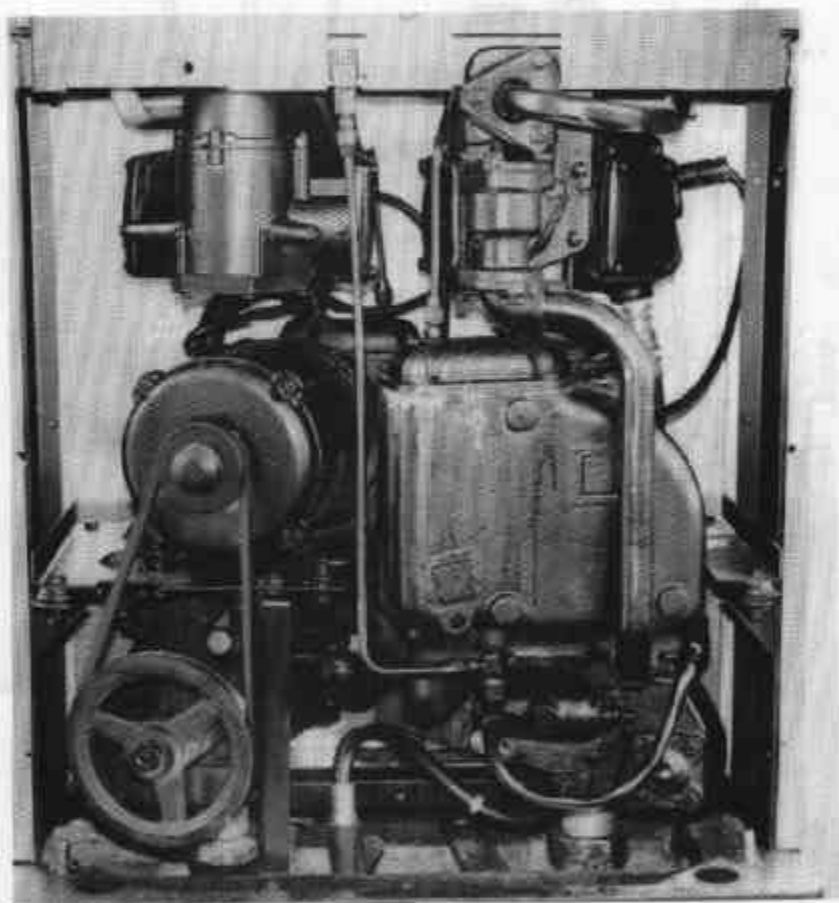
5/BA/80A
27/8/90

FIGURE 5/6A/80A - 4



Dresser-Wayne 2-piston Meter

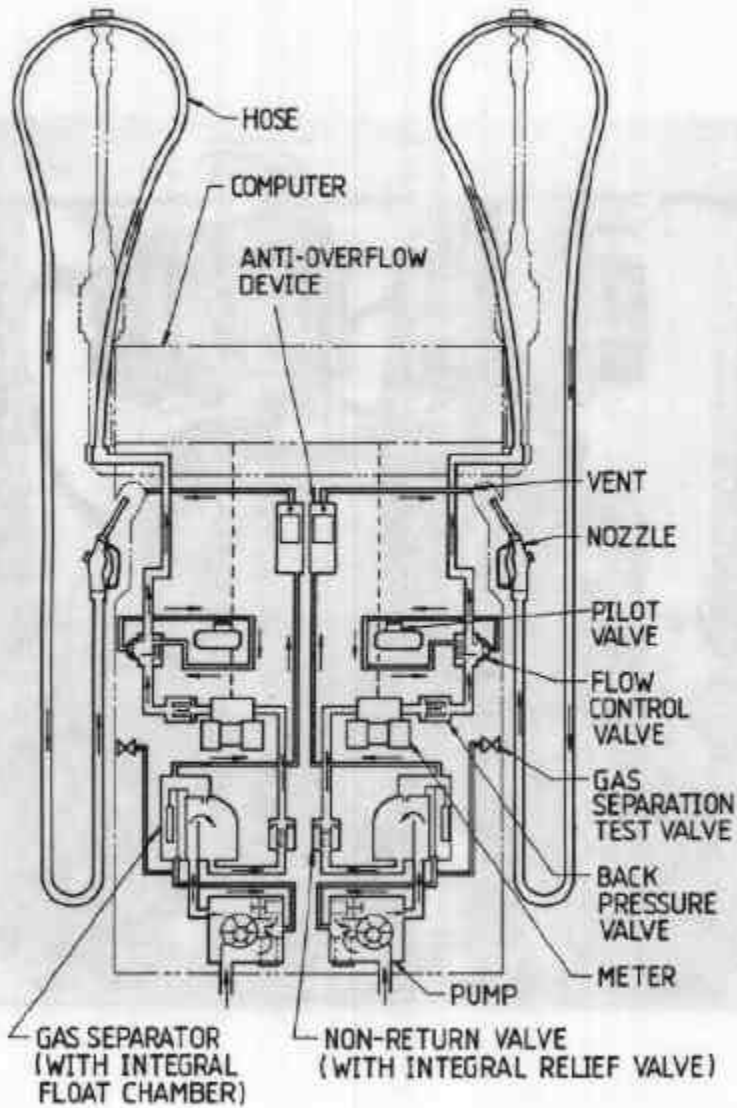
FIGURE 5/6A/80A - 5



Showing Dual Hydraulics
(Integral Pump & Gas Separator)

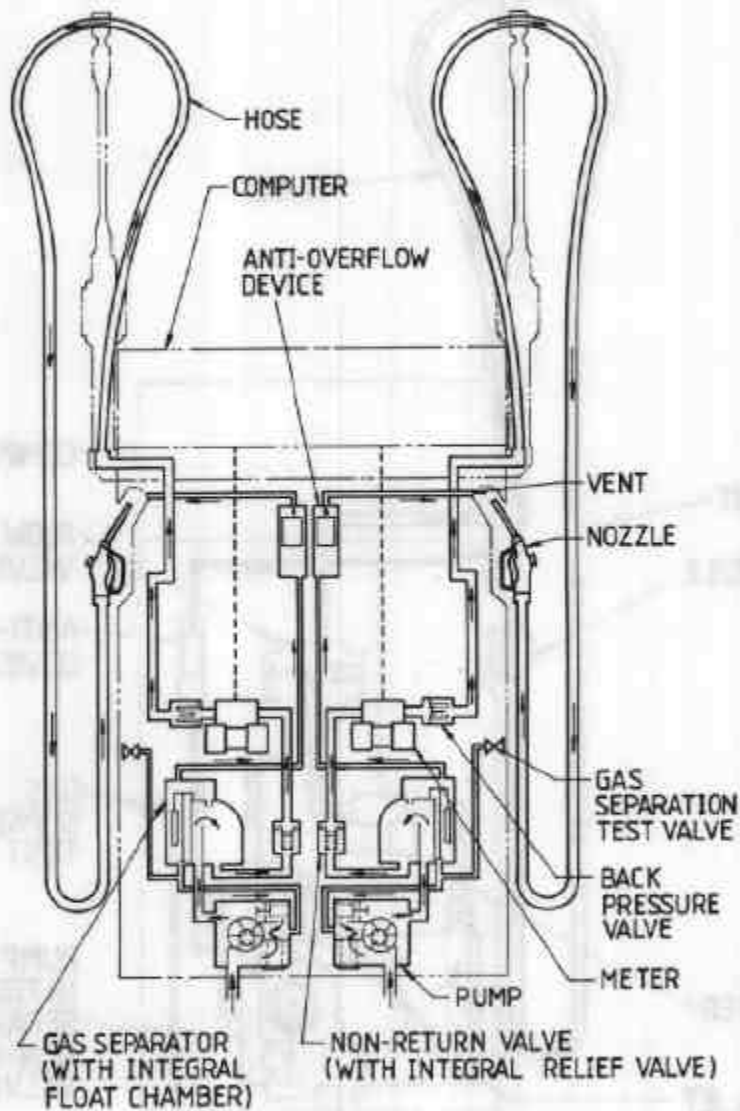
5/6A/80A
27/6/90

FIGURE 5/6A/80A - 6



Typical Hydraulic Arrangement
(Petrol, With Preset And Separate Pump & Gas Separator)

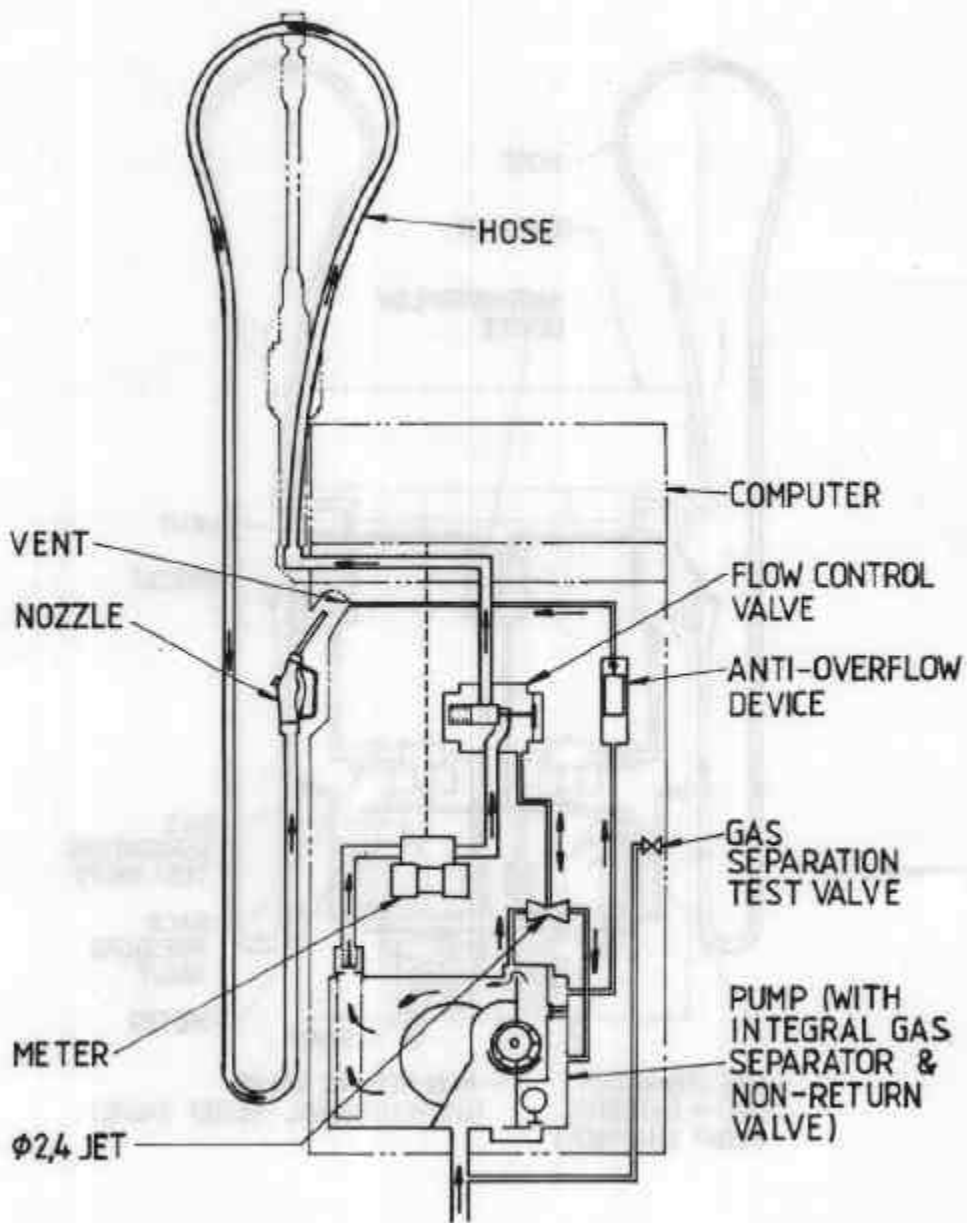
FIGURE 5/6A/80A - 7



Typical Hydraulic Arrangement
(Petrol, With Separate Pump & Gas Separator)

5/6A/80A
27/8/90

FIGURE 5/6A/80A - 8



Typical Hydraulic Arrangement
(Distillate, With Integral Pump & Gas Separator)