



**Australian Government**  
**National Measurement**  
**Institute**

Bradfield Road, West Lindfield NSW 2070

**Notification of Change**  
**Certificate of Approval No 5/6A/78A**  
**Change No 2**

Issued by the Chief Metrologist under Regulation 60  
of the  
*National Measurement Regulations 1999*

The following changes are made to the approval documentation for the

Gilbarco Model T095 Driveway Flowmeter

submitted by        Gilbarco Aust. Ltd  
                             (now Gilbarco Australia Limited)  
                             now of 20 Highgate Street  
                             AUBURN    NSW    2144.

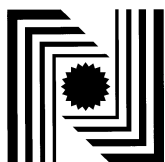
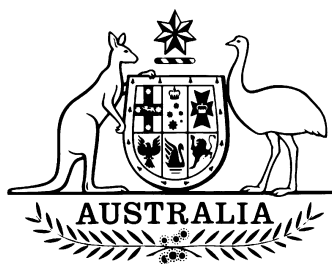
- A.    In Certificate of Approval 5/6A/78A dated 28 September 1995, the FILING ADVICE should be amended by adding the following:
- “Notification of Change No 1 dated 26 September 1996  
Notification of Change No 2 dated 3 September 2008”
- B.    In Technical Schedule No 5/6A/78A dated 27 August 1990 (27/8/90) clause **1.1 Features**, the last ‘bullet’ point should be amended to read;
- “The nozzle used is an Elaflex model ‘Slimline 2’ ZVA nozzle, or any other compatible approved nozzle.”

Note: Approval 5/6A/84A was cancelled in respect of new instruments on 1 December 2001.

Signed by a person authorised by the Chief Metrologist  
to exercise his powers under Regulation 60 of the  
*National Measurement Regulations 1999*.

A handwritten signature in black ink, appearing to be 'J. G. T.', written in a cursive style.

5/6A/78A  
14 November 2001



## National Standards Commission

12 Lyonpark Road, North Ryde NSW

### Cancellation Certificate of Approval

**No 5/6A/78A**

Issued under Regulation 60  
of the  
National Measurement Regulations 1999

This is to certify that the approval for use for trade granted in respect of the

Gilbarco Model T095 Driveway Flowmeter

submitted by Gilbarco Aust. Ltd  
12-38 Talavera Road  
North Ryde NSW 2113

has been cancelled in respect of new instruments as from 1 December 2001.

Signed by a person authorised under Regulation 60  
of the National Measurement Regulations 1999 to  
exercise the powers and functions of the Commission  
under this Regulation.

## National Standards Commission



### Certificate of Approval

**No 5/6A/78A**

Issued under Regulation 9  
of the  
National Measurement (Patterns of Measuring Instruments) Regulations

This is to certify that an approval for use for trade has been granted in respect of  
the

Gilbarco Model T095 Driveway Flowmeter

submitted by Gilbarco Aust. Ltd  
12-38 Talavera Road  
North Ryde NSW 2113.

**NOTE:** This Certificate relates to the suitability of the pattern of the instrument for use for trade only in respect of its metrological characteristics. This Certificate does not constitute or imply any guarantee of compliance by the manufacturer or any other person with any requirements regarding safety.

#### CONDITIONS OF APPROVAL

This approval is subject to review on or after 1 August 1995.  
This approval expires in respect of new instruments on 1 August 1996.

Instruments purporting to comply with this approval shall be marked NSC No 5/6A/78A and only by persons authorised by the submitter.

The Commission reserves the right to examine any instrument or component of an instrument purporting to comply with this approval.

It is the submittor's responsibility to ensure that all instruments marked with this approval number are constructed as described in the documentation lodged with the Commission and with the relevant Certificate of Approval and Technical Schedule. Failure to comply with this Condition may attract penalties under Section 19B of the National Measurement Act and may result in cancellation or withdrawal of the approval, in accordance with the Commission's Document 106.

Auxiliary devices used with this instrument shall comply with the requirements of General Supplementary Certificate No S1/0/A.

#### DESCRIPTIVE ADVICE

**Pattern:** approved 3 July 1990

- A Gilbarco model T095 driveway flowmeter.

**Variants:** approved 3 July 1990

1. Other models and in configurations as listed in Table 1.
2. With certain alternative Gilbarco meters.
3. With a Gilbarco model Salesmaker or Trimline pump and motor.

Technical Schedule No 5/6A/78A describes the pattern and variants 1 to 3.

**Variants:** approved 13 March 1992

4. With a pump unit with integral gas detector and gas separator.
5. With a Gilbarco model STP hydraulic supply system.

Technical Schedule No 5/6A/78A Variation No 1 describes variants 4 and 5.

**Variants:** approved 4 March 1993

6. With a single pump unit supplying two meters.

Technical Schedule No 5/6A/78A Variation No 2 describes variant 6.

**Variants:** approved 12 June 1995

7. With a modified model T258AT pump unit.

Certificate of Approval No 5/6A/78A

Page 3

**Variant:** approved 31 August 1995

8. With a modified model T258AT pump unit, and having a gas detector fitted.

Technical Schedule No 5/6A/78A Variation No 3 describes variants 7 and 8.

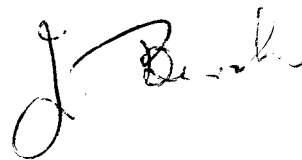
#### FILING ADVICE

Certificate of Approval No 5/6A/78A dated 29 May 1993 is superseded by this Certificate and may be destroyed.

The documentation for this approval now comprises:

Certificate of Approval No 5/6A/78A dated 28 September 1995  
Technical Schedule No 5/6A/78A dated 27 August 1990 (incl. Table 1 and  
Test Procedure)  
Technical Schedule No 5/6A/78A Variation No 1 dated 11 June 1992  
Technical Schedule No 5/6A/78A Variation No 2 dated 29 May 1993  
Technical Schedule No 5/6A/78A Variation No 3 dated 28 September 1995  
Figures 1 to 10 dated 27 August 1990  
Figure 11 dated 11 June 1992  
Figure 12 dated 29 May 1993

Signed and sealed by a person authorised under Regulation 9 of the National Measurement (Patterns of Measuring Instruments) Regulations to exercise the powers and functions of the Commission under this Regulation.





5/6A/78A  
27/8/90

## National Standards Commission

### TECHNICAL SCHEDULE No 5/6A/78A

**Pattern:** Gilbarco Model T095 Driveway Flowmeter.

**Submitter:** Gilbarco Aust. Ltd  
12-38 Talavera Road  
North Ryde NSW 2113.

#### 1. Description of Pattern

A Gilbarco model T095 driveway flowmeter (Figures 1, 3 and 4) approved for use in either locally or remotely authorised applications.

##### 1.1 Features

The model T095 has the following components or features (Table 1):

- A type T258 pump unit with internal or external gas separator, and mounted integrally with or remotely from the flowmeter.
- A type T257 gas separator sump. The pump and gas separator are matched to the flow rate and products of the flowmeter.
- A type T262-1 2-piston meter approved for use up to 55 L/min.
- A Gilbarco Electrolite-type computing indicator with a maximum unit price of 999.9 c/L. A "non-volatile" adaptor may be fitted to the display module to retain transaction data in the event of a power failure.
- An optional preset facility, using a flow control valve. The instrument may be fitted with a purchaser-operated preset control or the preset facility may be set via the vendor's console.
- **Any Commission-approved ZVA nozzle.**

##### 1.2 Sealing and Verification Provision

Provision is made for the application of a verification mark. The meter calibration is sealed.

### 1.3 Markings

Instruments are marked with the following data, together in one location:

Manufacturer's name or mark	
Model number	
Serial number	
NSC approval number	5/6A/78A
Maximum flow rate	..... L/min
Minimum flow rate	..... L/min
Liquid temperature range	5°C to 40°C
Maximum operating pressure	..... kPa
Approved for use with (products)	.....

## 2. Description of Variants

### 2.1 Variant 1

Other models and in configurations as listed in Table 1, including:

- As dual driveway flowmeters (Figure 2);
- In Gilbarco Highline-type housings (Figures 5 and 6);
- In Gilbarco Trimline-type housings (Figures 7 to 9);
- With Gilbarco Highline-type indicators, in which case the maximum unit price is either 99.9 or 999.9 c/L; and
- For use with products other than petrol (#) (Figure 10).

# A gas detection system is mandatory for products other than petrol, and is required for petrol when the flow rate exceeds 55 L/min. The system comprises either a gas detection and flow control valve or a gas detection pilot valve and flow control valve.

## 2.2 Variant 2

With an alternative meter as listed below:

- A type T262, B series 4-piston meter, approved for use up to 90 L/min (#); or
- A type T262, C series 4-piston meter, approved for use up to 90 L/min (#).
- # A gas detection system is mandatory for products other than petrol, and is required for petrol when the flow rate exceeds 55 L/min. The system comprises either a gas detection and flow control valve or a gas detection pilot valve and flow control valve.

## 2.3 Variant 3

With the pump and motor of the pattern and variants replaced by the pump and motor from any Commission-approved Gilbarco Trimline or Salesmaker series driveway flowmeter.

This variant may be used with both low flow rate (up to 55 L/min) and high flow rate (up to 90 L/min) versions of these flowmeters, and with either the Gilbarco B or C series meters.

## TEST PROCEDURE

Instruments should be tested in accordance with any tests included in the approval documentation for the control console (where used), and in accordance with any relevant tests specified in the Inspector's Handbook.

### Maximum Permissible Errors at Verification/Certification

The maximum permissible error applied during a verification test from normal flow rate to the minimum flow rate specified in the Certificate of Approval or Technical Schedule is  $\pm 0.3\%$ .



TABLE 1

Model Number	Notes	Approved Products
T171*		P
T172*		P
T080*	# **	P,K or D
T081*	#	P
T090*	**	D
T092*	**	P,K or D
T095*	**	P,K or D
T096*		P
T097*	**	P,K or D
T098*	**	P,K or D

\* Any model number may have a variety of suffixes.

# May be "Mk 1" or "Mk 2".

\*\* A gas detection system is mandatory for products other than petrol.

P Petrol  
K Kerosene  
D Distillate

Approved Models and Configurations



# National Standards Commission

## TECHNICAL SCHEDULE No 5/6A/78A

### VARIATION No 1

**Pattern:** Gilbarco Model T095 Driveway Flowmeter.

**Submittor:** Gilbarco Aust. Ltd  
12-38 Talavera Road  
North Ryde NSW 2113.

#### 1. Description of Variants

##### 1.1 Variant 4

Any model driveway flowmeter of this approval fitted with a model T258AT pump unit with integral gas detector and gas separator (Figure 11), in which case the model number has a 'P' suffix.

##### 1.2 Variant 5

Any model driveway flowmeter of this approval fitted with a model STP hydraulic supply system (as described in the documentation of NSC approval No S245), in which case the model number has a 'D' suffix.



5/6A/78A  
29/5/93

## National Standards Commission

TECHNICAL SCHEDULE No 5/6A/78A

VARIATION No 2

**Pattern:** Gilbarco Model T095 Driveway Flowmeter.

**Submitter:** Gilbarco Aust. Ltd  
12-38 Talavera Road  
North Ryde NSW 2113.

### 1. Description of Variant 6

Any model driveway flowmeter of this approval fitted with a single model T258AT pump unit supplying two meters (Figure 12).

### NOTIFICATION OF CHANGE

Table 1 included as part of Technical Schedule No 5/6A/78A dated 27/8/90 should be replaced by the Table attached herein, which now includes additional models.

TABLE 1

Model Number	Notes	Approved Products
T166*	**	P, K or D
T167*	**	P, K or D
T171*		P
T172*		P
T080*	# **	P, K or D
T081*	#	P
T090*	**	P, K or D
T092*	**	P, K or D
T095*	**	P, K or D
T096*	**	P, K or D
T097*	**	P, K or D
T098*	**	P, K or D

\* Any model number may have a variety of suffixes.

# May be "Mk 1" or "Mk 2".

\*\* A gas detection system is necessary for products other than petrol.

P Petrol  
K Kerosene  
D Distillate

Approved Models and Configurations



## National Standards Commission

TECHNICAL SCHEDULE No 5/6A/78A

VARIATION No 3

**Pattern:** Gilbarco Model T095 Driveway Flowmeter.

**Submittor:** Gilbarco Aust. Ltd  
12-38 Talavera Road  
North Ryde NSW 2113.

### 1. Description of Variants

#### 1.1 Variant 7

Certain models of driveway flowmeters of this approval (identified by the model number having a 'P' suffix) fitted with a modified Gilbarco model T258AT pump unit with integral gas separator but without the gas detector. A modified T257 gas separator sump with inlet flow control valve is also fitted (similar to that shown in Figure 11).

Instruments are suitable for use with petrol at flow rates up to 55 L/min.

#### 1.2 Variant 8

Similar to variant 7 but with a gas detector fitted, in which case instruments are suitable for use with products other than petrol and with petrol at flow rates greater than 55 L/min.

# National Standards Commission



## Notification of Change Certificate of Approval No 5/6A/78A Change No 1

The following changes are made to the approval documentation for the

Gilbarco Model T095 Driveway Flowmeter

submitted by            Gilbarco Aust. Ltd  
                              12-38 Talavera Road  
                              North Ryde    NSW   2113.

In Certificate of Approval No 5/6A/78A dated 28 September 1995;

1. The Condition of Approval referring to the review of the approval should be amended to read:

This approval becomes subject to review on 1 August 1995, and then every 5 years thereafter.

2. The Condition of Approval referring to the expiry of the approval should be deleted.

Signed and sealed by a person authorised under Regulation 9 of the National Measurement (Patterns of Instruments) Regulations to exercise the powers and functions of the Commission under this Regulation.

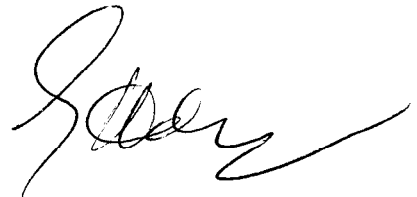
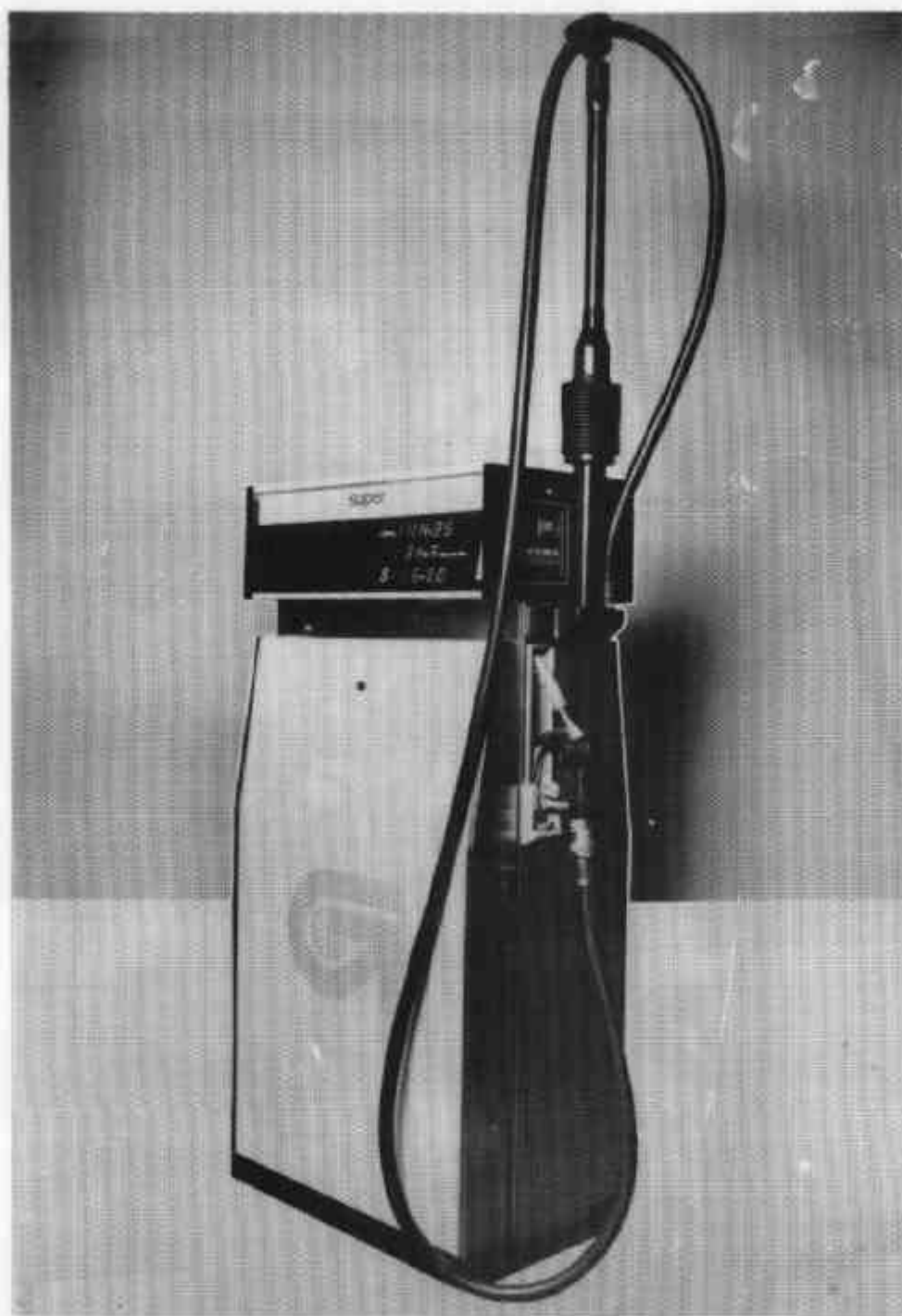


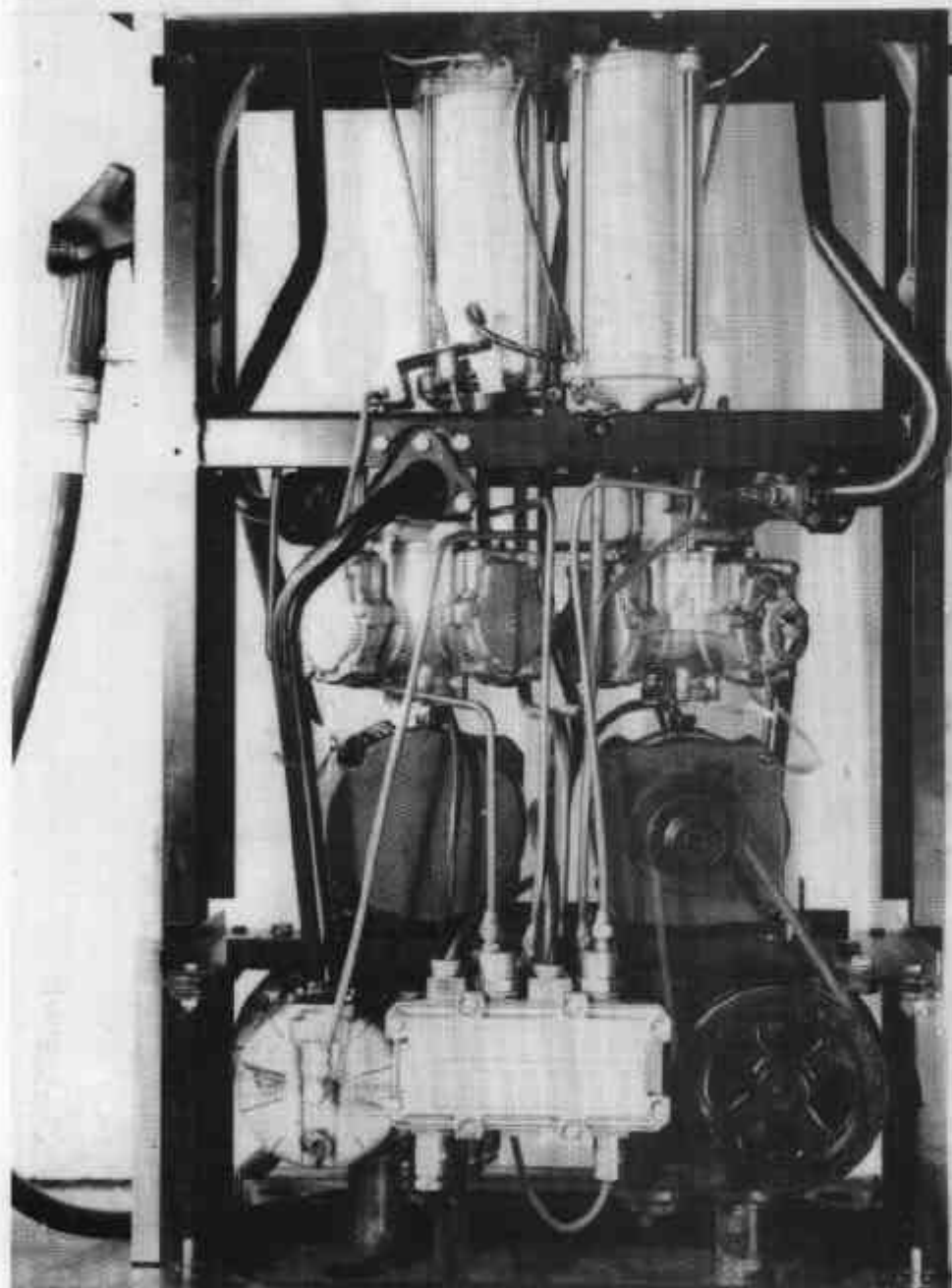
FIGURE 5/6A/78A - 1



Gilbarco Model T095 Driveway Flowmeter

5/6A/78A  
27/8/90

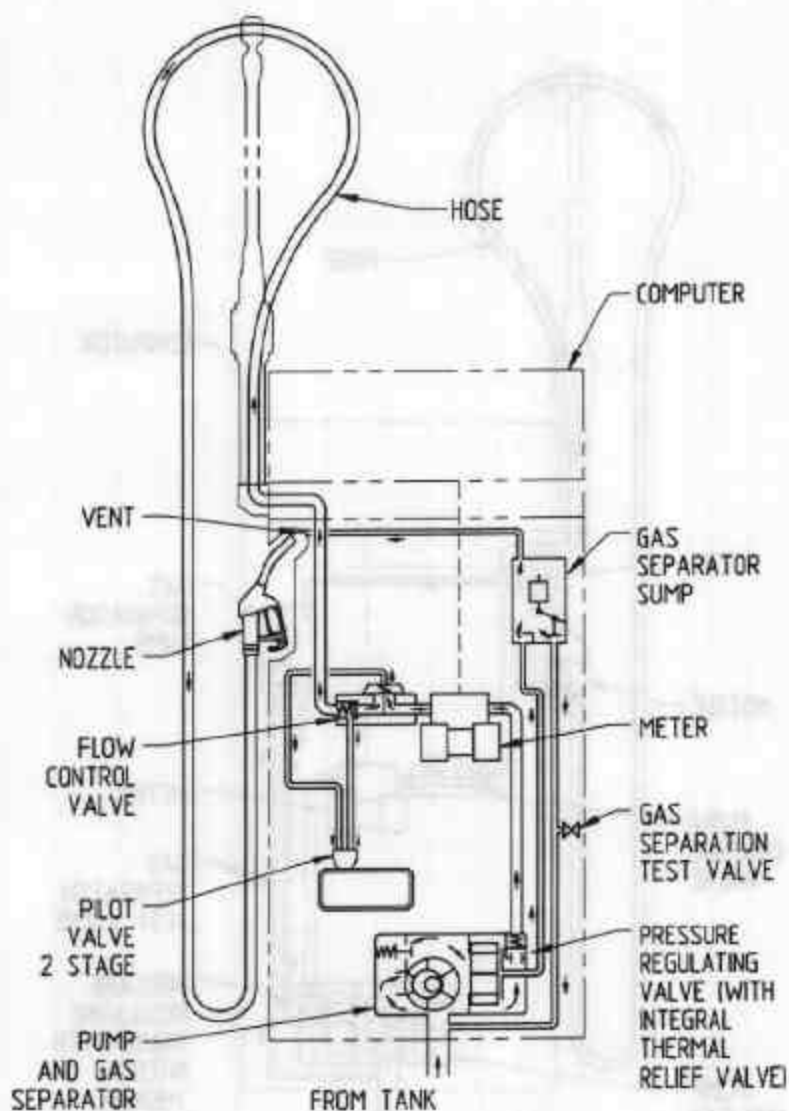
FIGURE 5/6A/78A - 2



Typical Dual Flowmeter With Covers Removed



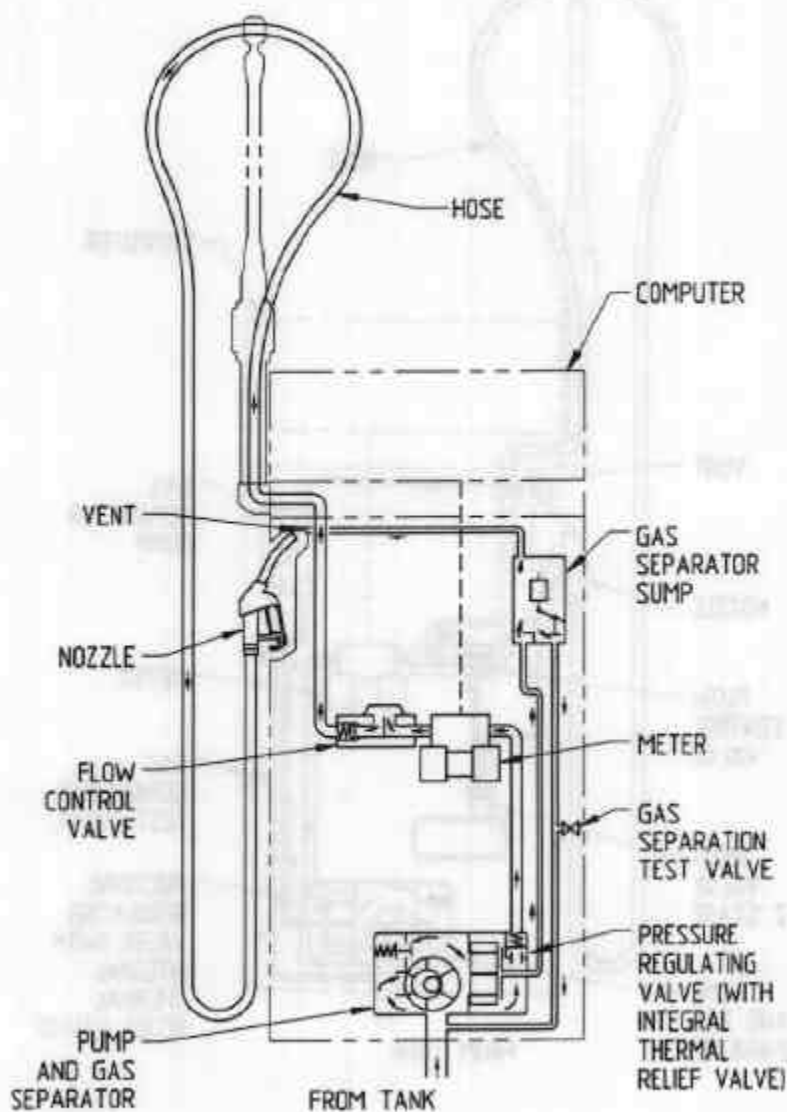
FIGURE 5/6A/78A - 3



Typical Hydraulic Arrangement  
(For Petrol And With Preset)

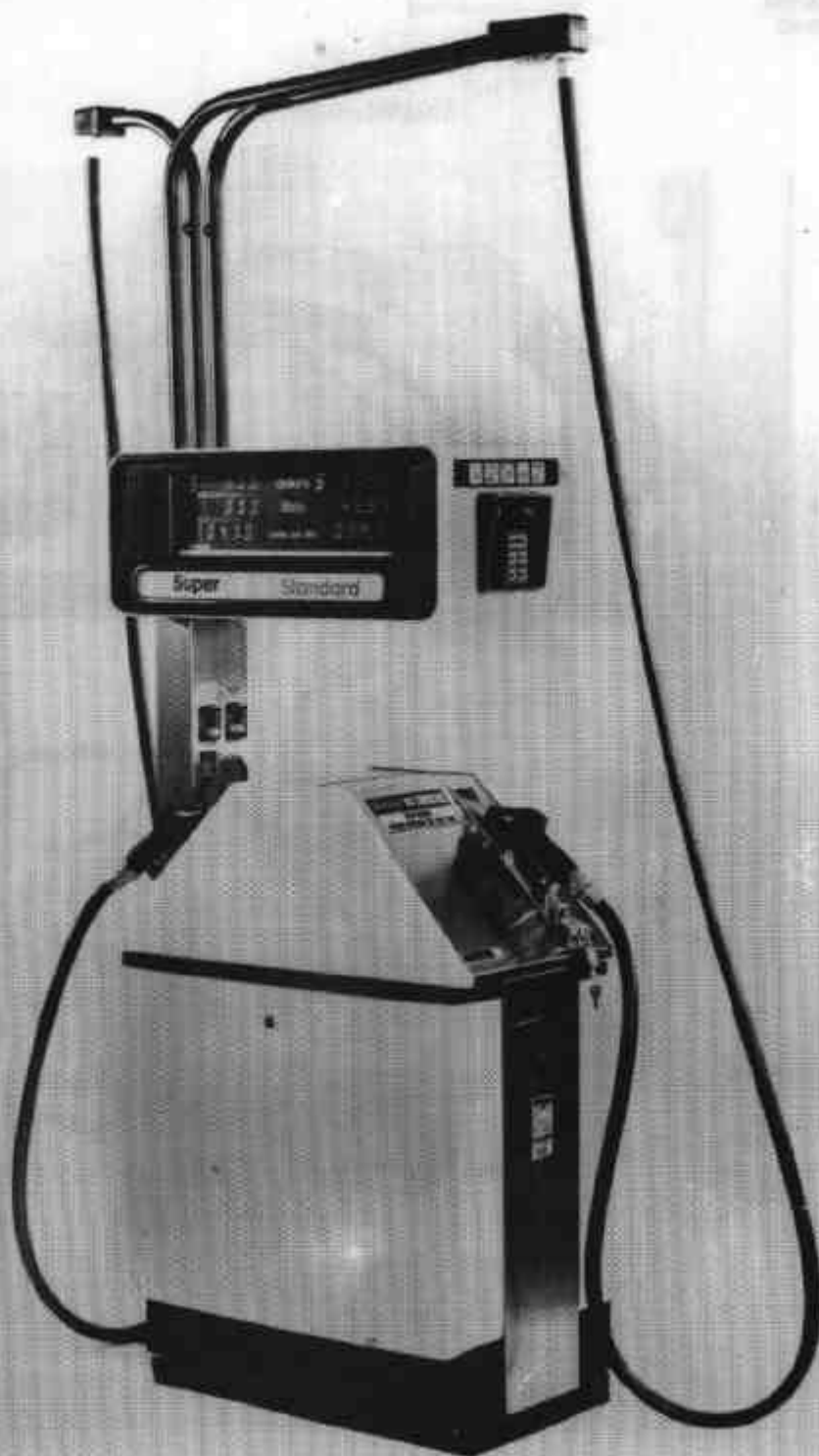
5/6A/78A  
27/8/90

FIGURE 5/6A/78A - 4



Typical Hydraulic Arrangement  
(For Petrol And Without Preset)

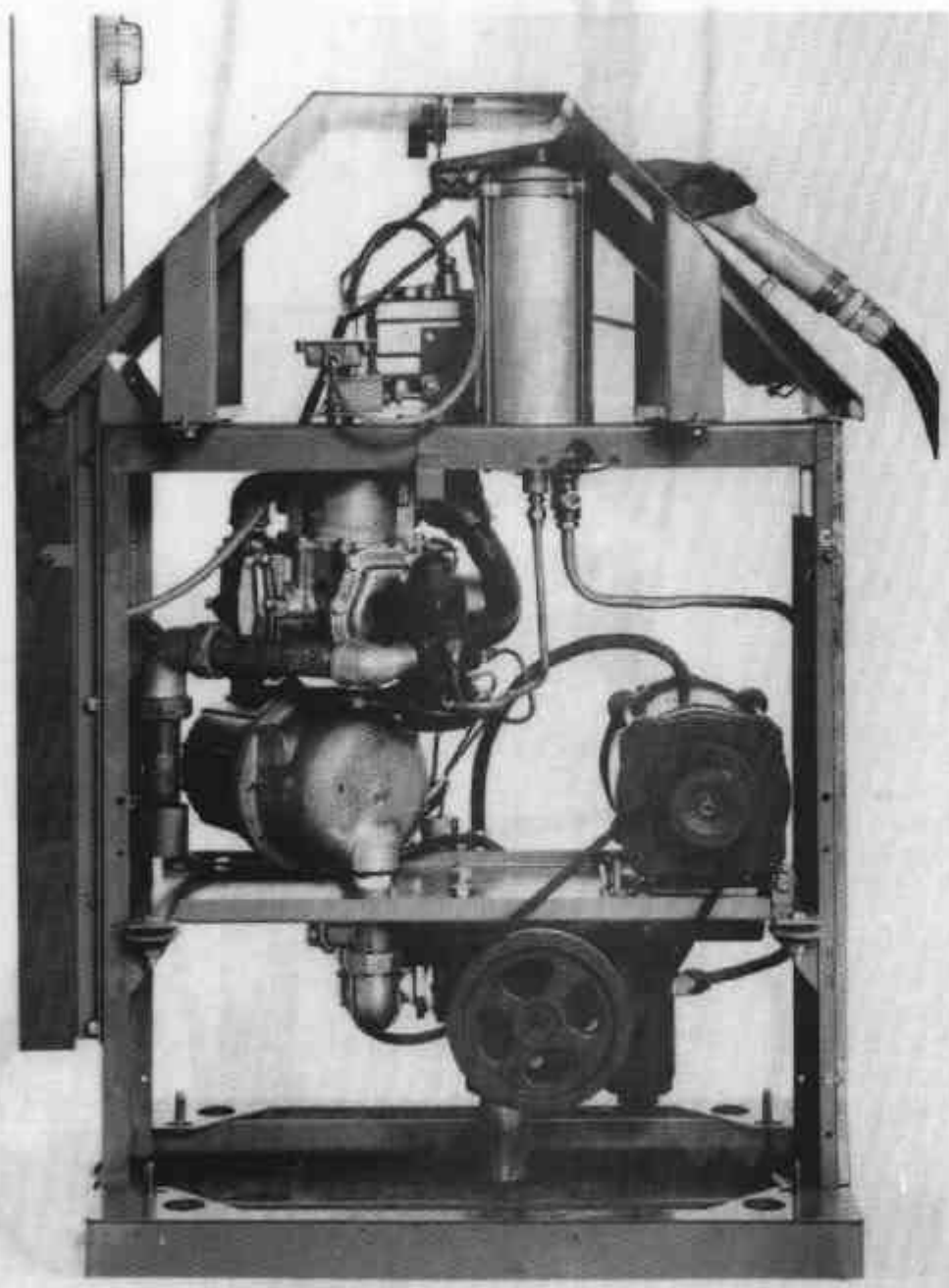
FIGURE 5/6A/78A - 5



Typical Dual Highline-type Flowmeter

5/6A/78A  
27/8/90

FIGURE 5/6A/78A - 6



Typical Single Highline-type Flowmeter

5/6A/78A  
27/8/90

FIGURE 5/6A/78A - 7



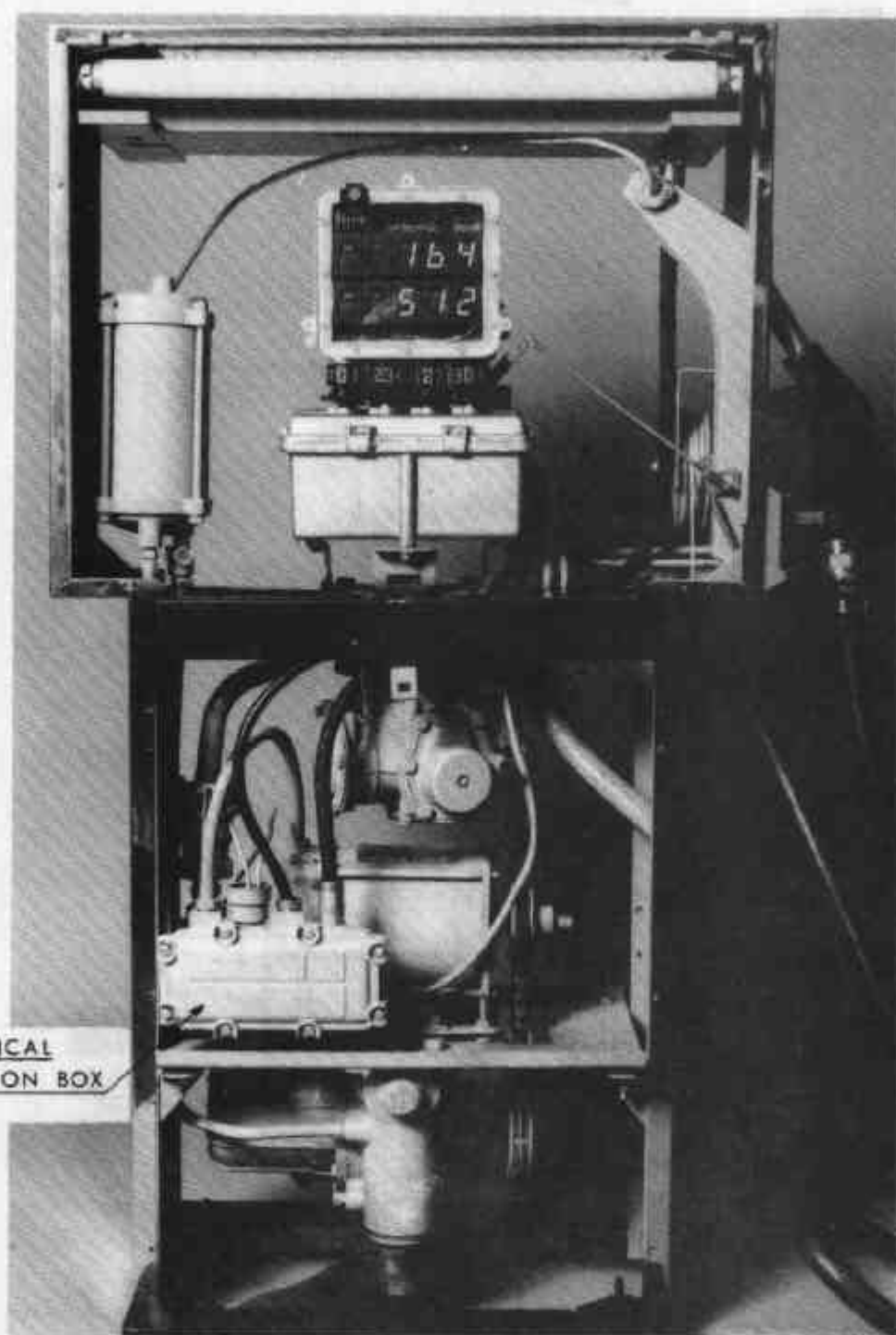
Trimline-type Flowmeter (Square Housing)

FIGURE 5/6A/78A - 8



Trimline-type Flowmeter (Round Housing)

FIGURE 5/6A/78A - 9

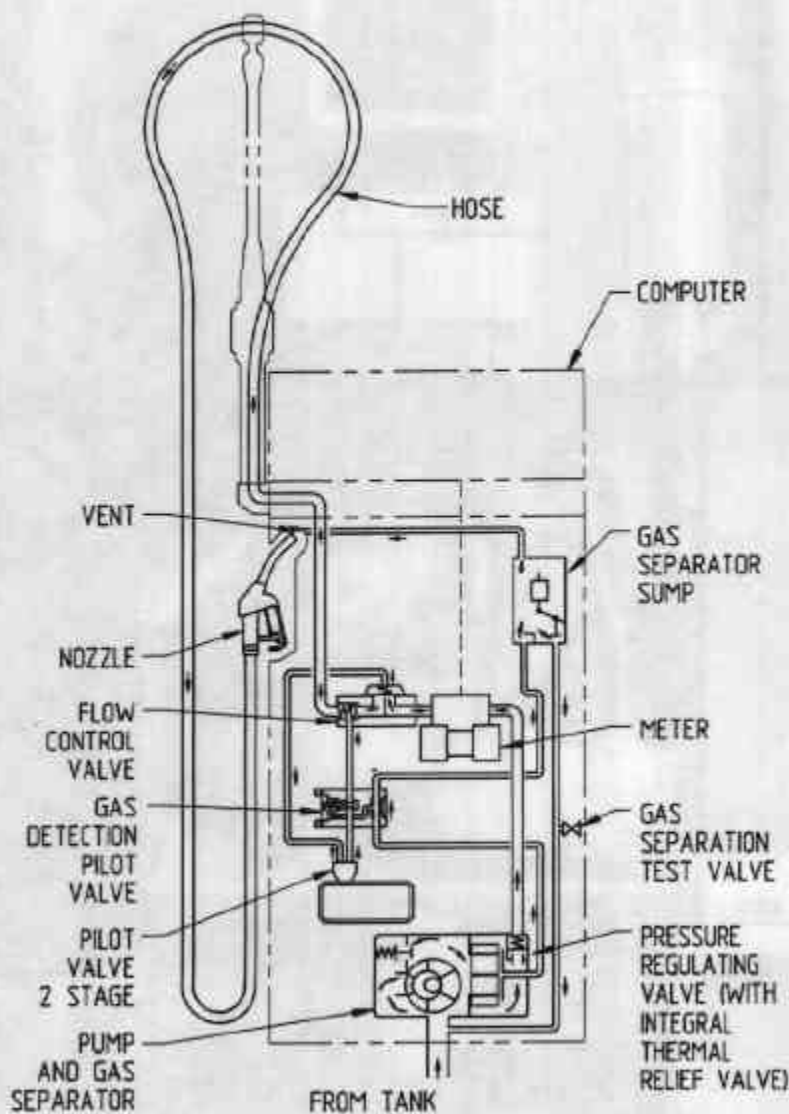


ELECTRICAL  
JUNCTION BOX

Trimline-type Flowmeter Without Covers

5/6A/78A  
27/8/90

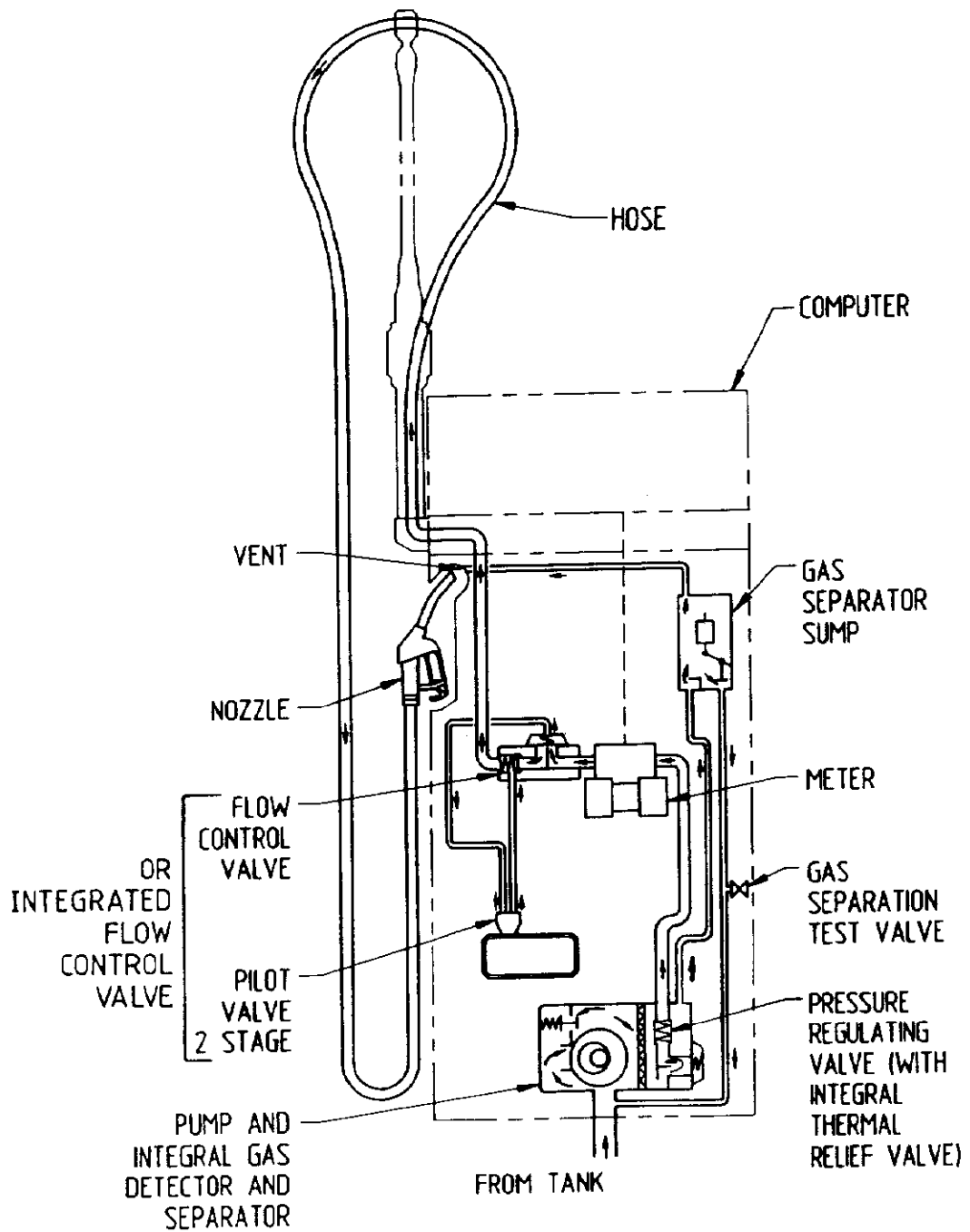
FIGURE 5/6A/78A - 10



Typical Hydraulic Arrangement  
(Various Products And With Preset)

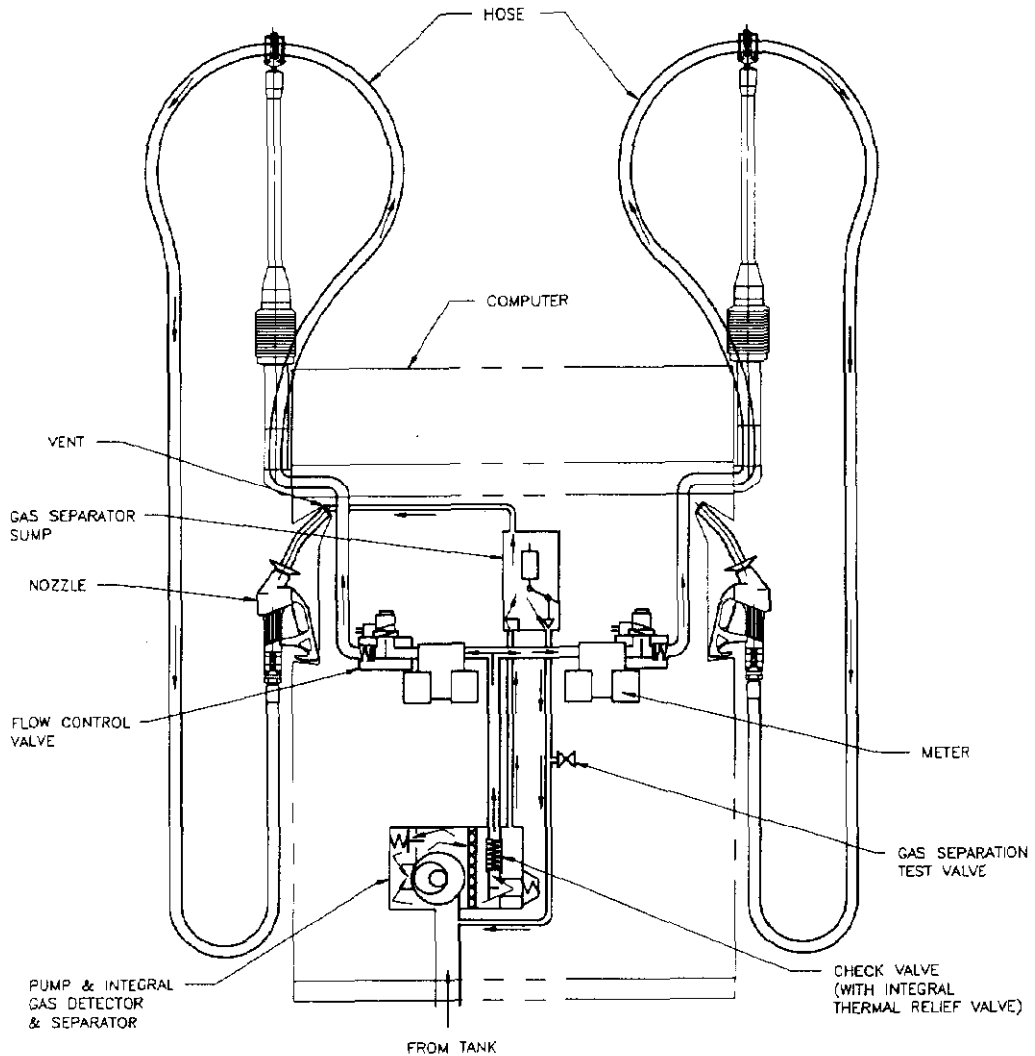


FIGURE 5/6A/78A - 11



Typical Hydraulic Arrangement - Variant 4

FIGURE 5/6A/78A - 12



Typical Variant 6 Driveway Flowmeter  
With Single Pump and Two Meters