

National Standards Commission



Cancellation Certificate of Approval

No 4/5/15

Issued under Regulation 9
of the
National Measurement (Patterns of Measuring Instruments) Regulations

This is to certify that the approval for use for trade granted in respect of the

ITW Model ETN Liquor Dispenser

submitted by ITW New Zealand Ltd
7 Charann Place
Avondale Auckland 7
NEW ZEALAND

and described in Certificate of Approval No 4/5/15

will be cancelled in respect of new instruments as from 30 September 1993.

Signed and sealed by a person authorised under
Regulation 9 of the National Measurement
(Patterns of Measuring Instruments) Regulations
to exercise the powers and functions of the
Commission under this Regulation.

A handwritten signature in black ink, appearing to read 'J. Birch'. The signature is written in a cursive style with a large initial 'J'.

National Standards Commission



Certificate of Approval

No 4/5/15

Issued under Regulation 9
of the
National Measurement (Patterns of Instruments) Regulations

This is to certify that an approval for use for trade has been granted in respect of the

ITW Model ETN Liquor Dispenser

submitted by ITW New Zealand Ltd
7 Charann Place,
Avondale Auckland 7
NEW ZEALAND

Signed and sealed by a person authorised under Regulation 9 of the National Measurement (Patterns of Instruments) Regulations to exercise the powers and functions of the Commission under this Regulation.

A handwritten signature in black ink, appearing to be 'J. H. ...', is written over the signature line.

CONDITIONS OF APPROVAL

This approval is subject to review on or after 1/1/96.

This approval expires in respect of new instruments on 1/1/97.

Instruments purporting to comply with this approval shall be marked NSC No 4/5/15 and only by persons authorised by the submittor.

It is the submittor's responsibility to ensure that all instruments marked with this approval number are constructed as described in the drawings and specifications lodged with the Commission and with the relevant Certificate of Approval and Technical Schedule. Failure to comply with this Condition may attract penalties under Section 19B of the National Measurement Act and may result in cancellation or withdrawal of the approval, in accordance with the Commission's Document 106.

The Commission reserves the right to examine any instrument or component of an instrument purporting to comply with this approval.

DESCRIPTIVE ADVICE

Pattern: approved 4/12/90

- An ITW model ETN bottle-mounted liquor dispenser of 30 mL capacity.

Variant: approved 4/12/90

1. Of 15 mL capacity.

Technical Schedule No 4/5/15 describes the pattern and variant 1.

FILING ADVICE

The documentation for this approval comprises:

Certificate of Approval No 4/5/15 dated 13/3/91
Technical Schedule No 4/5/15 dated 13/3/91 (incl. Test Procedure)
Figures 1 and 2 dated 13/3/91



National Standards Commission

TECHNICAL SCHEDULE No 4/5/15

Pattern: ITW Model ETN Liquor Dispenser

Submitter: ITW New Zealand Ltd
7 Charann Place,
Avondale Auckland 7
NEW ZEALAND

1. Description of Pattern

An ITW model ETN single-delivery push-button-activated bottle-mounted dispenser (Figure 1) for the measurement of 30 mL of brandy (including cognac and armagnac), gin, rum, vodka or whisky (whiskey).

It consists of a measuring chamber and an internal valving arrangement which, when operated by the solenoid and electronic timing mechanism, allows a measured quantity of liquid to be dispensed.

1.1 Operation

The measurement of a full quantity of liquid is independent of the operator's control and depends on the internal electronically-controlled timing mechanism. A delivery once started cannot be stopped by the operator and, the next delivery cannot be started until the measuring chamber has had sufficient time to refill as indicated by the LEDs.

A removable bottle adaptor with a valve between the measuring chamber and the bottle allows bottles to be replaced without removing the dispenser from its mount. An electronic counter may be fitted which displays up to 999 deliveries.

1.2 Markings and Verification Provision

The displacement spacer and the measuring chamber of the instrument are clearly and permanently marked "30 mL" (Figure 2). In addition, the instrument is clearly marked, either on a permanently attached nameplate or as part of the instrument, with the following information:

Manufacturer's name or mark

Serial number

NSC approval number

Quantity

NSC No 4/5/15

The instrument has provision for a verification mark to be applied.

2. Description of Variant 1

Of 15 mL capacity.

TEST PROCEDURE

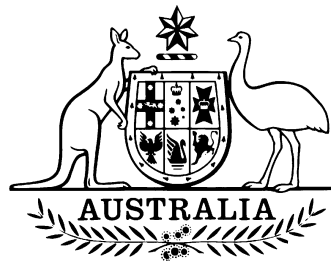
Instruments should be tested in conjunction with any relevant tests specified in the Inspector's Handbook.

Maximum Permissible Errors at Verification/Certification

The maximum permissible errors applicable at verification/certification are:

± 0.6 mL for deliveries of 15 mL; and
 ± 1.0 mL for deliveries of 30 mL.

4/5/15
28 September 2001



National Standards Commission

12 Lyonpark Road, North Ryde NSW

Notification of Change

Certificate of Approval No 4/5/15

Change No 1

The following change is made to the approval documentation for the

ITW Model ETN Liquor Dispenser

submitted by ITW New Zealand Ltd
now ITW Fastex New Zealand
7 Charann Place
Avondale Auckland 7
New Zealand.

In Technical Schedule No 4/5/15 dated 13 March 1991, clause 1. **Description of Pattern** should be amended by adding the following:

“Instruments may be fitted with a wire from the solenoid coil connection on the circuit board to allow transfer of pulse information to an area controller. The controller converts the pulse information into programmed information for downloading to a bar management system.”

NOTE: This approval was cancelled in respect of new instruments on 30 September 1993.

Signed by a person authorised under Regulation 60 of the National Measurement Regulations 1999 to exercise the powers and functions of the Commission under this Regulation.



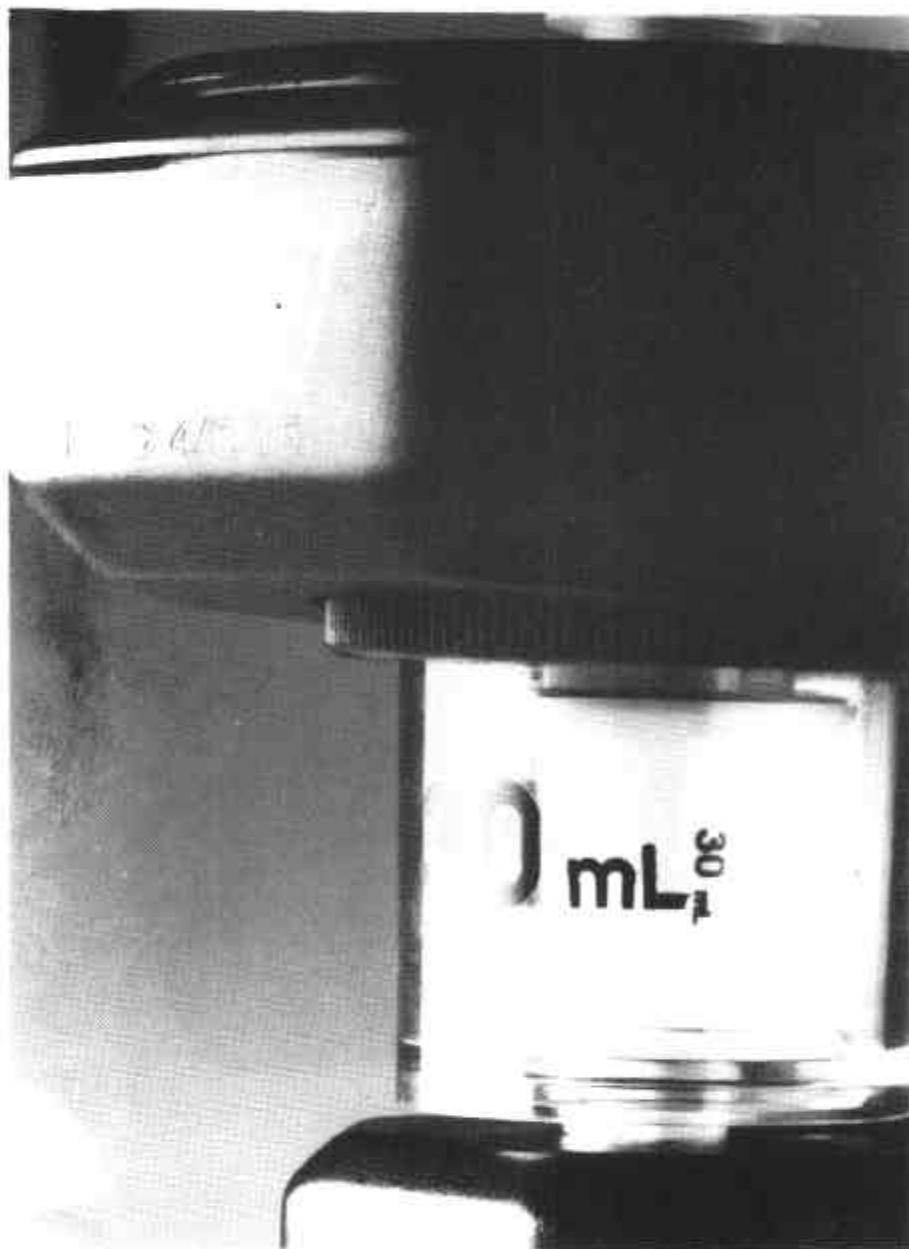
FIGURE 4/5/15 - 1



ITW Model ETN 30 mL Liquor Dispenser

4/4/15
13/3/91

FIGURE 4/5/15 - 2



Showing Bowl and Spacer Markings