



Australian Government

Department of Industry,
Science and Resources

**National
Measurement
Institute**

36 Bradfield Road, West Lindfield NSW 2070

Supplementary Certificate of Approval
NMI S809

Issued by the Chief Metrologist under Regulation 60
of the
National Measurement Regulations 1999

This is to certify that an approval for use for trade has been granted in respect of the instruments herein described.

Ai Menu Systems model Ai-POS Point of Sale (POS) System

submitted by Ai Menu Systems Pty Ltd
Unit 1b / 50 Logan Rd
Woolloongabba QLD 4102

NOTE: This Certificate relates to the suitability of the pattern of the instrument for use for trade only in respect of its metrological characteristics. This Certificate does not constitute or imply any guarantee of compliance by the manufacturer or any other person with any requirements regarding safety.

This approval has been granted with reference to document NMI M 7, *Pattern Approval Specifications for Point of Sale Systems*, dated June 2012.

This approval is subject to review at the decision of the Chief Metrologist in accordance with the conditions specified in the document NMI P 106.

DOCUMENT HISTORY

Rev	Reason/Details	Date
0	Pattern provisionally approved – interim certificate issued	08/04/21
1	Pattern approved – certificate issued	15/12/21
2	Variant 1 approved – certificate issued	10/07/25

CONDITIONS OF APPROVAL

General

Instruments purporting to comply with this approval shall be marked with pattern approval number 'NMI S809' and only by persons authorised by the submitter.

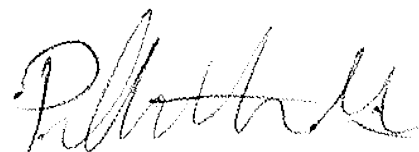
Instruments purporting to comply with this approval and currently marked 'NMI PS809' may be re-marked 'NMI S809' but only by persons authorised by the submitter.

It is the submitter's responsibility to ensure that all instruments marked with this approval number are constructed as described in the documentation lodged with the National Measurement Institute (NMI) and with the relevant Certificate of Approval and Technical Schedule. Failure to comply with this Condition may attract penalties under Section 19B of the National Measurement Act and may result in cancellation or withdrawal of the approval, in accordance with document NMI P 106.

Special

Certain aspects of this instrument (in particular transaction record printing formats) are able to be configured by the user. Whilst NMI believes that acceptable formats can be achieved for typical basic sales modes, it is also possible for the instrument to be configured to produce unacceptable formats, and use of some formats may be inappropriate for different sales modes. It is the responsibility of the user to ensure that acceptable and appropriate formats are used in any particular situation.

Signed by a person authorised by the Chief Metrologist
to exercise their powers under Regulation 60 of the
National Measurement Regulations 1999.



Phillip Mitchell
A/g Manager
Policy and Regulatory Services

TECHNICAL SCHEDULE No S809

1. Description of Pattern provisionally approved on 08/04/21 approved on 15/12/21

An Ai Menu Systems model Ai-POS (**) point of sale (POS) system to provide certain additional facilities for transactions when interfaced to compatible (#) NMI-approved measuring instruments granted with reference to document NMI M 7.

1.1 Key Features

- The system provides point of sale arrangements for a CAS model PD-II self-indicating non-automatic weighing instrument (approval NMI 6/4C/237) or other compatible (#) NMI-approved measuring instruments.
 - The system receives measurement data from the output interface of the approved measuring instrument and computes prices using a product look up (PLU) facility.
 - The system computes total price for multiple items including non-measured items and is approved for use for transactions direct to the public.
 - Manually entered measurement data shall be indicated as such on a printed transaction record.
 - The system is able to apply a preset tare value up to the maximum capacity of the approved measuring instrument. Preset tare values may be keyboard-entered or stored (e.g. within a PLU facility).
 - The POS controllers may be connected in a network to share common PLU data, and to accumulate and retrieve management information.
- (#) 'Compatible' is defined to mean that no additions/changes to the hardware/software specified in this approval are required for satisfactory operation of the system.

1.2 System Description

The ABC point of sale (POS) system (Figure 1) comprises:

(i) POS Controller

The Ai Menu Systems model Ai-POS POS controller comprises a Ai Menu TouchPOS model 6000P or equivalent (*) PC-based device that operates a Microsoft Windows-based operating system running Ai-POS version 5.x.x.x software. The software version number is displayed in the title bar of the software.

(ii) Electronic Indications

Indications shall satisfy the requirements of document NMI M 7, *Pattern Approval Specifications for Point of Sale Systems*.

The TouchPOS model 6000p POS controller has an integral touch sensitive display to provide an indication for the operator (Figure 2).

Information additional to that required by document NMI M 7, including totalisation details and product images, may also be indicated.

Note: There is no NMI M 7 compliant customer display fitted to the POS system.

(iii) Printing Devices

Transaction records shall satisfy the requirements of document NMI M 7, *Pattern Approval Specifications for Point of Sale Systems*.

An Ai Menu model 800WF receipt printer or equivalent (*) is connected to provide a transaction record printing facility. A typical record is shown in Figure 3.

- (*) 'Equivalent' is defined to mean other proprietary equipment of the same or better specifications requiring no changes to the software specified in this approval for satisfactory operation of the system.

(iv) Additional System Facilities

In addition, the system may include other facilities including point of sale cash drawers, magnetic card and/or barcode reader and electronic funds transfer (EFT), etc. The facilities shall not interact with the system in a way that would cause an incorrect indication of the measured quantity or price.

1.3 Verification Provision

Provision is made for the application of a verification mark.

1.4 Descriptive Markings

The POS controller is marked in a clear and permanent manner, in one location, with the following information:

Submittor's name or mark
Serial number or other unique identifier
Pattern approval number	NMI S809

2. Description of Variant 1

approved on 10/07/25

The Ai Menu Systems model Ai-POSX point of sale (POS) system is similar to that described in clause 1.2 but with updated UI application (Figure 4). The legally relevant operation of the system remains unchanged. A typical record is shown in Figure 5.

TEST PROCEDURE No S809

The POS system shall be tested in addition to any tests specified in the approval documentation for the measuring instrument/s to which the POS system is connected, as appropriate

The POS system shall be tested in the normal operational mode of the instrument and device, not in 'training mode' or any other management mode.

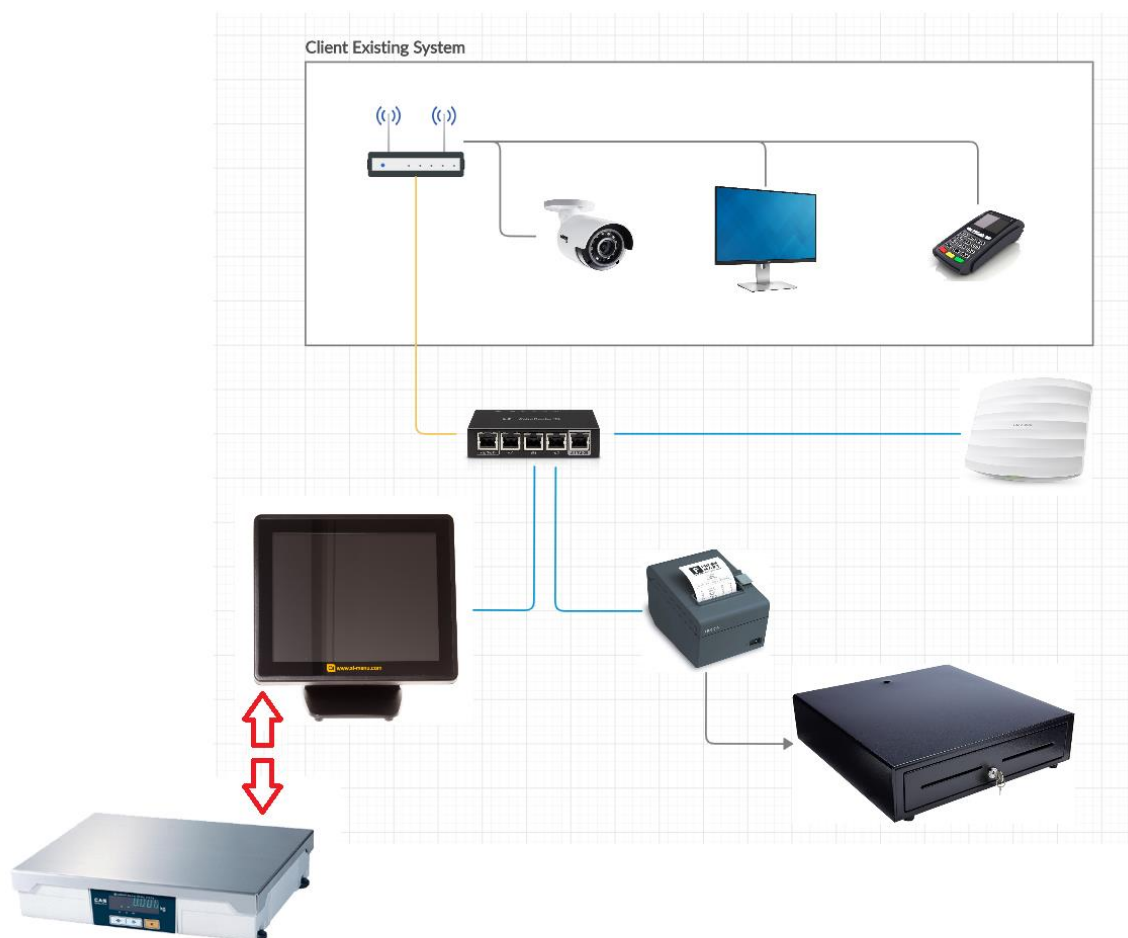
Maximum Permissible Error

The maximum permissible error for price computation is ± 0.5 cent.

TESTS

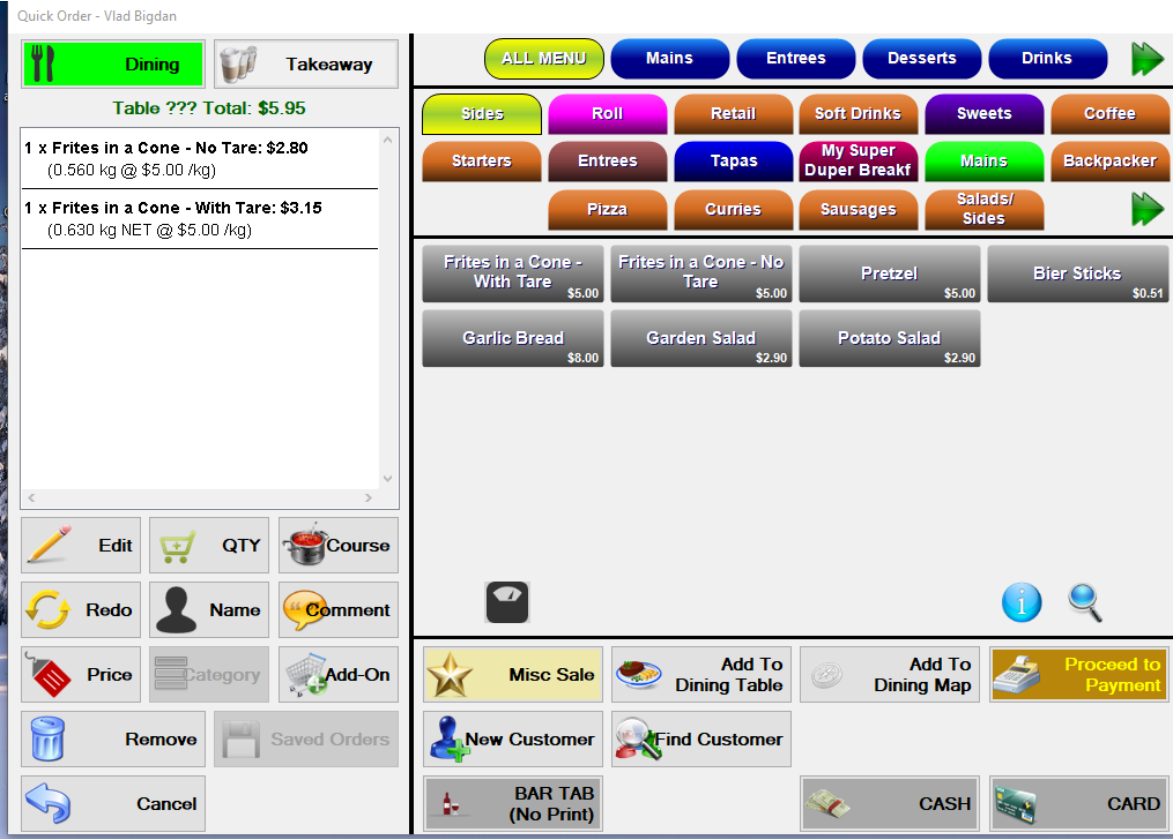
1. Check the software version number/s.
2. Check that the POS system faithfully reproduces the measurement data in the same units and scale interval as the connected approved measuring instrument, e.g. test by using a PLU without a stored tare.
3. Check that the system performs correct price computation, and computes and indicates a correct unrounded subtotal. For cash payment methods, check that any rounding calculation is correct.
4. Perform a measurement with a preset tare applied and confirm that the POS system correctly calculates and indicates a net measurement result.
5. Manually enter some pre-determined measurement data and ensure that the printed transaction record clearly indicates the transaction as such.
6. For network systems check to ensure that the measurement data printed on the transaction record is correctly reproduced.
7. Ensure that electronic indications and printed information are in accordance with document NMI M 7.

FIGURE S809 – 1



Ai Menu Systems model Ai-POS Point of Sale (POS) System

FIGURE S809 – 2



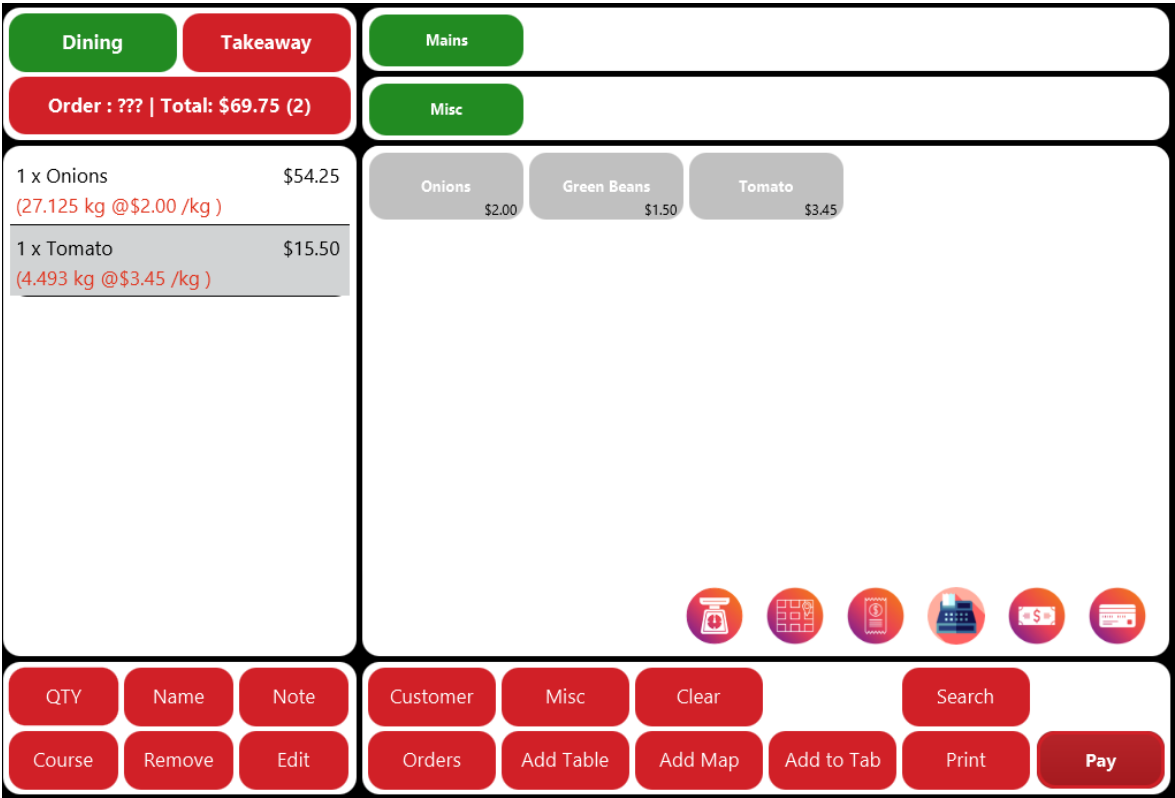
Typical Operator Display

FIGURE S809 – 3

TAX INVOICE	
DATE: 25/11/2021	
TIME: 4:54 PM	
ORDER: 2	
Sides:	
1 x Frites in a Cone - No Tare (0.560 kg @ \$5.00/kg *	\$2.80
1 x Frites in a Cone - With Tare (0.630 kg NET @ \$5.00/kg * Manual Entry)	\$3.15
<hr/>	
Total: \$5.95 (Includes GST of \$0.54)	
Total Due: \$5.95	

A Typical Receipt

FIGURE S809 – 4



Typical Operator Display (Variant 1)

FIGURE S809 – 5

Demo Restaurant

50 xxx Road, yyyy QLD -4000

ABN: 1231235

Tel: 111111

TAX INVOICE

INV#: OaLjmLgvhvPXbcf98L5RcA

DATE: 07/07/2025

TIME: 11:55 AM

ORDER
2

Misc:

1 x Item w/Tare(0.5Kg)	\$20.85
(1.390 kg NET @ \$15.00 /kg)	
1 x Milk 3L	\$5.50
1 x Onions	\$5.78
(2.890 kg @ \$2.00 /kg)	
1 x Tomato	\$12.08
(3.500 kg @ \$3.45 /kg)	

Gratuity: \$ _____

Total: \$44.21

(Includes GST of \$4.02)

Total Due: \$44.21

A Typical Receipt (Variant 1)

~ End of Document ~