



Australian Government
**Australian Customs and
Border Protection Service**

**REVIEW OF THE ANTI-DUMPING MEASURES RELATED TO CONSUMER
PINEAPPLE EXPORTED FROM THAILAND**

Notice of additional information obtained by Customs and Border Protection

Customs and Border Protection invites interested parties to provide submissions in relation to the following information, obtained subsequent to the publication of the Statement of Essential Facts (SEF) No. 195A and 195B:

- TROPFIN Report on raw material price and weather conditions related to pineapple in Thailand, dated April 2013, available below.
- Daily pineapple prices (USD/kg) for the period 1 October 2012 to 11 June 2013, obtained from the Centre for Agricultural Information, Office of Agricultural Economics, Thailand. This has been translated to English and is condensed into a separately attached excel spreadsheet. The translated spreadsheet includes links to the Centre for Agricultural Information's web-site, where the information is available in Thai.

Lodgement of Submissions

Customs and Border Protection's report of its final recommendations to the Minister for Home Affairs (the Minister) is due on **24 June 2013**.

Interested parties are invited to lodge written submissions concerning this additional information by email, no later than **17 June 2013** to itrops1@customs.gov.au.

Submissions containing confidential information must clearly be marked "For Official Use Only". Interested parties must also lodge a non-confidential version or summary of their submission to be placed on the public record. Further direction on the provision of information for the public record is available at:

<http://www.customs.gov.au/webdata/resources/files/ACDN201242Provisionofinformationforhepublicrecord.pdf>

Enquiries about the review may be directed to the case team by phone on 6275 5675 or email itrops1@customs.gov.au.

PUBLIC RECORD



TROPFIN
PROCESSED TROPICAL FRUITS

Tropfin (Thailand) Co., Ltd
138/89 J.C. Building Fl 11 - J 11
Nares Road, Siphaya, Bangrak,
Bangkok 10500 - **Thailand**

Tel: +66 (0)2 267.6713
Fax: +66 (0)2 267.6714
E-mail: info@tropfin.co.th

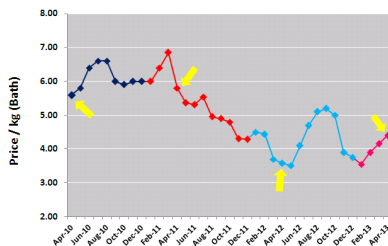
Pineapple - Thailand

April, 2013

Fruit intake and raw material price

Volumes of raw materials have not been improved from last month and supply is getting more limited. Some smaller and middle sized factories are not able to process everyday due to lack of raw materials to start up their production. Raw material price has been further rising to the level of THB 4.2-4.8/ kg and are expected to reach level of THB 5.0-5.5/ kg during May.

Pineapple, Thailand, Raw mat price: 2010 - 2013

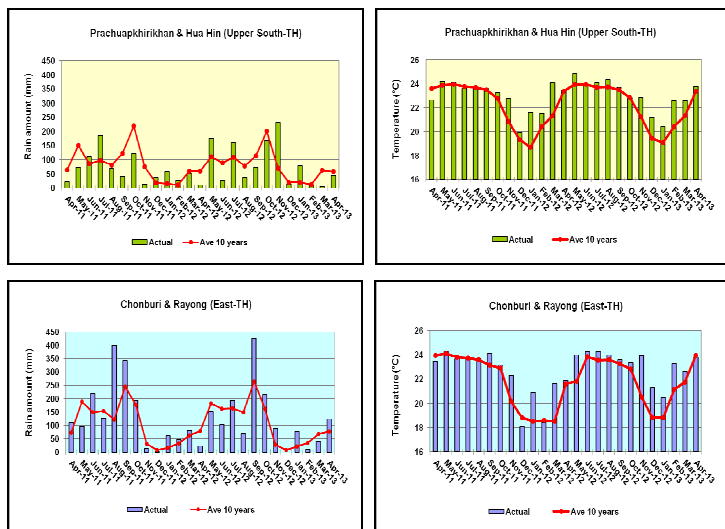


Data source: Office of Agricultural Economics (OAE)

Weather, b/a, nitrate

During April, rainfall in the East was higher than previous month and higher than the same period in last 2 years. The increased rainfall will not compensate the damage caused by the drought during February and March. Temperatures in both areas were higher than previous month, but considered at the same level as the 10 years average.

Rain amount and temperature during Apr'11 - Apr'13 in major pineapple growing areas

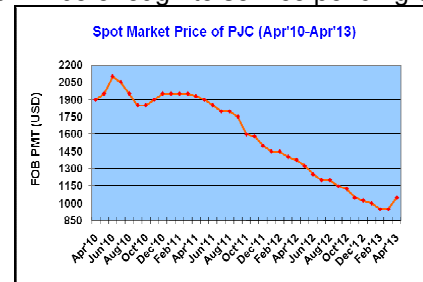


Data source: Thai Meteorological Department (TMD)

B/a ratio's during April were in the same level as previous month, 20-25 in the South and Min. 22 in the East. Nitrate levels are still managed at max. 25 ppm and are mostly under 15 ppm especially in the East. Early harvesting during this shortage period could lead to increased nitrate values.

PJC Bx60 prices

Spot market prices for Pineapple Juice Concentrate (PJC) Bx60 were rising to the level of USD 1,000 - 1,150 pmt FOB Thailand for PJC produced during winter crop. Last year stocks (Frozen or Aseptic) are still being offered at appr. USD 900 pmt FOB for prompt take off in bigger volumes, but these offers are getting less. At the same time, there are more buyers considering to cover their demand quickly. Another factor leading to upward pressure on the cost price for pineapple processors is the continuous appreciation of the Thai baht: appr. 5% since the beginning 2013. Some factories are withdrawing pending offers, giving short validities or even stop offering until the raw material supply situation becomes clearer. Factories are worried whether current crop will be enough to service pending contracts.



The DDU (duty unpaid) prices in Europe for PJC Bx60 as standard blend in tank wagon or a grade A product in drums directly from origin, are also increasing to USD 1,150 – 1,300 pmt, dependent on quality and origin of the products.

Thai PJC exports in MT

	Jan-Dec			Jan-Mar 2012	Jan-Mar 2013
	2010	2011	2012		
Netherlands	54,378	53,697	50,522	14,501	13,996
Italy	10,905	15,795	12,241	2,616	1,667
Spain	5,158	4,273	4,463	1,194	1,167
U.K.	1,742	1,665	2,659	663	928
France	1,173	1,815	1,108	137	506
Germany	944	2,123	242	52	45
Russia	668	669	1,232	189	365

From the statistics can be concluded that less PJC was been shipped to main market Europe even though prices are appr. 30% lower than last year. Worldwide exports of PJC in MT from Thailand during Q1-2013 has been slightly increasing especially to the USA, Iran, Israel, Egypt, Chile and South Korea.

NFC Prices

Not From Concentrate (NFC) pineapple juice shipments from Thailand are limited compared to PJC shipments and going mainly to the Netherlands, Spain and Egypt.

PINEAPPLE

Purchase prices of agricultural products to the market daily, medium and major markets

Centre for Agricultural Information, Office of Agricultural Economics

Information May 2013

Unit: USD / kg

Oct 2012 - June 2013		Pineapple plant				
		Siam Food Factory	SAICO Company Ltd	Pineapple Growers Cooperative	Samroyod Company Ltd	Kui Fruit Company Limited
		Nong District, Chonburi Tel. (038) 291391	Tue Development Rayong	Ban Kha Tambon Bung, the Ratchaburi Tel. (032) 731267	Prachuap Khiri Khan. Tel. (032) 684234	Kui Buri District, Prachuap Khiri Khan Tel. (032) 681578-9
Month	Day	Large size				
Oct	1	5.20	5.20	5.30	5.50	5.40
	2	5.20	5.20	5.30	5.50	5.40
	3	5.20	5.20	5.30	5.50	5.40
	4	5.20	5.20	5.50	5.50	5.40
	5	5.20	5.20	5.50	5.50	5.40
	6	-	-	-	-	-
	7	-	-	-	-	-
	8	5.20	5.20	5.50	5.50	5.40
	9	5.20	5.20	5.50	5.50	5.40
	10	5.20	5.20	5.50	5.50	5.40
	11	5.20	5.20	5.50	5.50	5.40
	12	5.20	5.20	5.50	5.50	5.40
	13	-	-	-	-	-
	14	-	-	-	-	-
	15	5.20	5.20	5.00	5.25	5.20
	16	5.20	5.20	5.00	5.25	5.20
	17	5.20	5.20	4.50	5.00	5.10
	18	5.20	5.20	4.50	5.00	5.10
	19	5.20	5.20	4.50	5.00	5.10
	20	-	-	-	-	-
	21	-	-	-	-	-
	22	4.80	5.00	4.50	4.90	4.80
	23	-	-	-	-	-
	24	5.20	5.00	4.50	4.90	4.80
	25	4.60	5.00	4.50	4.90	4.80
	26	4.60	5.00	4.50	4.90	4.80
	27	-	-	-	-	-
	28	-	-	-	-	-
	29	4.40	4.60	4.10	4.20	4.40
	30	4.40	4.60	4.10	4.20	4.40
	31	4.40	-	4.10	4.20	4.40
Nov	1	4.20	4.60	3.90	4.20	4.40
	2	4.20	4.40	3.70	4.00	4.00
	3	-	-	-	-	-
	4	-	-	-	-	-
	5	4.20	4.40	3.70	3.70	4.00
	6	4.20	4.20	3.70	3.70	4.00
	7	4.20	4.20	3.60	3.60	3.90
	8	4.20	4.20	3.60	3.60	3.90
	9	4.00	4.20	3.60	3.60	3.90
	10	-	-	-	-	-
	11	-	-	-	-	-
	12	4.00	4.20	3.40	3.30	3.50
	13	4.00	4.20	3.40	3.30	3.50
	14	4.00	4.20	3.40	3.30	3.50
	15	4.00	4.20	3.40	3.30	3.50
	16	4.00	4.20	3.40	3.60	3.60
	17	-	-	-	-	-
	18	-	-	-	-	-
	19	4.00	4.20	3.60	3.80	3.80
	20	4.00	4.20	3.60	3.80	3.80
	21	4.00	4.20	3.60	3.90	3.80
	22	4.00	4.20	3.60	3.90	3.80
	23	4.00	4.20	3.80	3.90	3.80
	24	-	-	-	-	-
	25	-	-	-	-	-
	26	4.00	4.20	3.80	3.90	3.80
	27	4.00	4.20	3.80	3.90	3.80
	28	4.00	4.20	3.90	3.90	3.80
	29	4.00	4.20	3.90	3.90	3.80
	30	4.00	4.20	4.00	3.90	3.80
Dec	1	-	-	-	-	-
	2	-	-	-	-	-
	3	4.00	4.20	4.00	3.90	3.80
	4	4.00	4.20	4.00	3.90	3.80
	5	-	-	-	-	-
	6	4.00	4.20	3.70	3.70	3.80
	7	4.00	4.20	3.70	3.70	3.80
	8	-	-	-	-	-
	9	-	-	-	-	-
	10	-	-	-	-	-
	11	4.00	4.20	3.60	3.60	3.70
	12	4.00	4.20	3.60	3.60	3.70
	13	4.00	4.20	3.60	3.60	3.70
	14	4.00	4.20	3.60	3.60	3.70
	15	-	-	-	-	-
	16	-	-	-	-	-
	17	4.00	4.20	3.30	3.40	3.50
	18	4.00	4.20	3.30	3.40	3.50
	19	4.00	4.20	3.30	3.40	3.50
	20	4.00	4.20	3.30	3.40	3.50
	21	4.00	4.20	3.40	3.40	3.50
	22	-	-	-	-	-

	23	-	-	-	-	-
	24	4.00	4.20	3.40	3.30	3.40
	25	4.00	4.20	3.40	3.30	3.40
	26	4.00	4.20	3.40	3.30	3.40
	27	4.00	4.20	3.40	3.30	3.40
	28	4.00	4.20	3.40	3.30	3.40
Jan	1	-	-	-	-	-
	2	4.00	4.20	3.40	3.30	3.40
	3	4.00	4.20	3.40	3.30	3.40
	4	4.00	4.20	3.50	3.30	3.40
	5	-	-	-	-	-
	6	-	-	-	-	-
	7	4.00	4.00	3.25	3.30	3.40
	8	4.00	4.00	3.25	3.30	3.40
	9	4.00	4.00	3.40	3.30	3.40
	10	4.00	4.00	3.30	3.30	3.40
	11	4.00	4.00	3.30	3.30	3.40
	12	-	-	-	-	-
	13	-	-	-	-	-
	14	4.00	4.00	3.30	3.30	3.40
	15	4.00	4.00	3.30	3.30	3.40
	16	4.00	4.00	3.30	3.30	3.40
	17	4.00	4.00	3.30	3.30	3.40
	18	4.00	4.00	3.30	3.30	3.40
	19	-	-	-	-	-
	20	-	-	-	-	-
	21	4.00	4.00	3.30	3.30	3.40
	22	4.00	4.00	3.30	3.30	3.40
	23	4.00	4.00	3.30	3.30	3.40
	24	4.00	4.00	3.30	3.30	3.40
	25	4.00	4.00	3.30	3.30	3.30
	26	-	-	-	-	-
	27	-	-	-	-	-
	28	4.00	4.00	3.70	3.60	3.70
	29	4.00	4.00	3.70	3.60	3.70
	30	4.00	4.00	3.70	3.60	3.70
	31	4.00	4.00	3.70	3.60	3.70
Feb	1	4.00	4.00	3.70	3.60	3.70
	2	-	-	-	-	-
	3	-	-	-	-	-
	4	4.00	4.00	3.70	3.70	3.80
	5	4.00	4.00	3.70	3.70	3.80
	6	4.20	4.00	3.70	3.70	3.80
	7	4.20	4.20	3.70	3.70	3.80
	8	4.20	4.20	3.70	3.70	3.80
	9	-	-	-	-	-
	10	-	-	-	-	-
	11	4.20	4.20	3.80	3.80	3.90
	12	4.20	4.20	3.80	3.80	3.90
	13	4.20	4.20	3.80	3.80	3.90
	14	4.20	4.20	3.80	3.80	3.90
	15	4.20	4.20	3.80	3.80	3.90
	16	-	-	-	-	-
	17	-	-	-	-	-
	18	4.20	4.20	3.80	3.80	3.90
	19	4.20	4.20	3.80	3.80	3.90
	20	4.20	4.20	3.80	3.80	3.90
	21	4.20	4.20	3.80	3.80	3.90
	22	4.20	4.20	3.80	3.80	3.90
	23	-	-	-	-	-
	24	-	-	-	-	-
	25	-	-	-	-	-
	26	4.20	4.20	3.80	3.80	3.90
	27	4.20	4.20	3.80	3.80	3.90
	28	4.20	4.20	3.80	3.80	3.90
Mar	1	4.20	4.20	3.80	3.80	3.90
	2	-	-	-	-	-
	3	-	-	-	-	-
	4	4.20	4.20	4.00	4.00	4.10
	5	4.20	4.20	4.00	4.00	4.10
	6	4.20	4.20	4.00	4.00	4.10
	7	4.20	4.20	4.00	4.00	4.10
	8	4.20	4.20	4.00	4.00	4.10
	9	-	-	-	-	-
	10	-	-	-	-	-
	11	4.20	4.20	4.00	4.00	4.10
	12	4.20	4.20	4.00	4.00	4.10
	13	4.20	4.20	4.00	4.00	4.10
	14	4.20	4.20	4.00	4.00	4.10
	15	4.20	4.20	4.00	4.00	4.10
	16	-	-	-	-	-
	17	-	-	-	-	-
	18	4.20	4.30	4.00	4.10	4.20
	19	4.20	4.30	4.00	4.10	4.20
	20	4.20	4.30	4.00	4.10	4.20
	21	4.20	4.30	4.00	4.10	4.20
	22	4.20	4.30	4.00	4.10	4.20
	23	-	-	-	-	-
	24	-	-	-	-	-
	25	4.20	4.30	4.10	4.30	4.20
	26	4.20	4.40	4.10	4.30	4.20
	27	4.20	4.40	4.10	4.30	4.20
	28	4.20	4.40	4.10	4.30	4.20
	29	4.20	4.40	4.10	4.30	4.20
	1	4.20	4.40	4.10	4.30	4.20
	2	4.20	4.40	4.10	4.30	4.20

Apr	3	4.20	4.40	4.10	4.30	4.20	
	4	4.20	4.40	4.10	4.30	4.20	
	5	4.20	4.40	4.10	4.50	4.40	
	6	-	-	-	-	-	
	7	-	-	-	-	-	
	8	-	-	-	-	-	
	9	4.20	4.40	4.30	4.50	4.40	
	10	4.20	4.40	4.30	4.50	4.40	
	11	4.20	4.40	4.30	4.50	4.40	
	12	-	-	-	-	-	
	13	-	-	-	-	-	
	14	-	-	-	-	-	
	15	-	-	-	-	-	
	16	-	-	-	-	-	
	17	4.20	4.40	4.10	4.50	4.40	
	18	4.20	4.40	4.10	4.50	4.40	
	19	4.40	4.40	4.20	4.60	4.50	
	20	-	-	-	-	-	
	21	-	-	-	-	-	
	22	4.40	4.40	4.20	4.60	4.50	
	23	4.40	4.40	4.20	4.60	4.50	
	24	4.40	4.60	4.20	4.60	4.50	
	25	4.60	4.80	4.20	4.60	4.50	
	26	4.60	4.80	4.20	4.60	4.50	
	27	-	-	-	-	-	
	28	-	-	-	-	-	
	29	4.60	4.80	4.20	4.60	4.50	
	30	4.60	4.80	4.20	4.60	4.50	
	May	1	4.60	4.80	4.20	4.60	4.50
		2	4.60	4.80	4.20	4.60	4.50
3		4.60	4.80	4.20	4.60	4.50	
4		-	-	-	-	-	
5		-	-	-	-	-	
6		-	-	-	-	-	
7		4.70	4.80	4.50	5.20	5.00	
8		4.70	4.80	4.50	5.20	5.00	
9		4.70	4.80	4.90	5.20	5.00	
10		4.70	4.80	4.90	5.20	5.00	
11		-	-	-	-	-	
12		-	-	-	-	-	
13		-	-	-	-	-	
14		4.70	5.00	4.90	5.20	5.00	
15		4.70	5.00	4.90	5.20	5.00	
16		4.70	5.00	4.90	5.20	5.00	
17		4.70	5.00	4.90	5.20	5.00	
18		-	-	-	-	-	
19		-	-	-	-	-	
20		5.10	5.00	4.90	5.20	5.00	
21		5.10	5.20	4.90	5.20	5.00	
22		5.40	5.20	4.90	5.20	5.00	
23		5.40	5.20	4.90	5.20	5.00	
24		-	-	-	-	-	
25		-	-	-	-	-	
26		-	-	-	-	-	
27		5.60	5.20	5.30	5.50	5.20	
28		5.60	5.20	5.30	5.50	5.20	
29		5.60	5.20	5.30	5.50	5.20	
30		5.60	5.20	5.40	5.60	5.40	
31		5.70	5.50	5.40	5.60	5.40	
June	1	-	-	-	-	-	
	2	-	-	-	-	-	
	3	5.70	5.50	5.60	5.70	5.60	
	4	5.70	5.50	5.60	5.70	5.60	
	5	5.70	5.50	5.60	5.70	5.60	
	6	5.70	5.50	5.60	5.70	5.60	
	7	5.70	5.50	5.60	5.90	5.80	
	8	-	-	-	-	-	
	9	-	-	-	-	-	
	10	5.70	5.50	5.60	5.90	5.80	
	11	5.70	5.50	5.60	5.90	5.80	

Primary source:

Office of Agricultural Economics: Daily Agricultural Prices
<http://www.oae.go.th/main.php?filename=price>

Daily pineapple prices - available at:

Oct-11 <http://www.oae.go.th/download/price/priceday/OCT/pineapple.html>
Nov-11 <http://www.oae.go.th/download/price/priceday/NOV/pineapple.html>
Dec-11 <http://www.oae.go.th/download/price/priceday/DEC/pineapple.html>
Jan-12 <http://www.oae.go.th/download/price/priceday/JAN56/pineapple.htm>
Feb-12 <http://www.oae.go.th/download/price/priceday/FEB56/pineapple.html>
Mar-12 <http://www.oae.go.th/download/price/priceday/MAR56/pineapple.html>
Apr-12 <http://www.oae.go.th/download/price/priceday/APR56/pineapple.html>
May-12 <http://www.oae.go.th/download/price/priceday/MAY56/pineapple.html>
Jun-12 <http://www.oae.go.th/download/price/priceday/JUNE56/pineapple.html>