



3 July 2014

The Director
Operations 3
Anti-Dumping Commission
1010 Latrobe Street
Melbourne Docklands VIC 3008

Inquiry 241: Goods covered by the notices

This submission is made on behalf of Capral Limited, the applicant, in relation to the anti-circumvention inquiry into aluminium extrusions from China. We specifically refer to section B.3 of the importer questionnaire, which asks importers to supply information on particular shipments claimed not to be the goods subject to the dumping and countervailing duty notices. This submission may assist the Anti-Dumping Commission in its verification of this information and determine whether imports have been correctly declared.

In the original investigation Customs published a table illustrating its interpretation of the goods under consideration as follows.¹

< GUC >				< Non GUC >		
1	2	3	4	5	6	7
Aluminium extrusions	Aluminium extrusions with minor working	Aluminium extrusions that are parts intended for use in intermediate or finished products	Aluminium extrusions that are themselves finished products	Unassembled products containing aluminium extrusions, e.g. 'kits' that at time of import comprise all necessary parts to assemble finished goods	Intermediate or partly assembled products containing aluminium extrusions	Fully assembled finished products containing aluminium extrusions
< Examples >						
Mill finish, painted, powder coated, anodised, or otherwise coated aluminium extrusions	Precision cut, machined, punched or drilled aluminium extrusions	Aluminium extrusions designed for use in a door or window	Carpet liner, fence posts, heat sinks	Shower frame kits, window kits, unassembled unitised curtain walls	Unglazed window or door frames	Windows, doors

¹ Customs Report No. 148, p.19 at 3.4.1

Non-Confidential – For Public Record

Our understanding of goods that are covered by each of the seven categories are outlined as follows, with suitable examples attached.

Goods covered by the notices

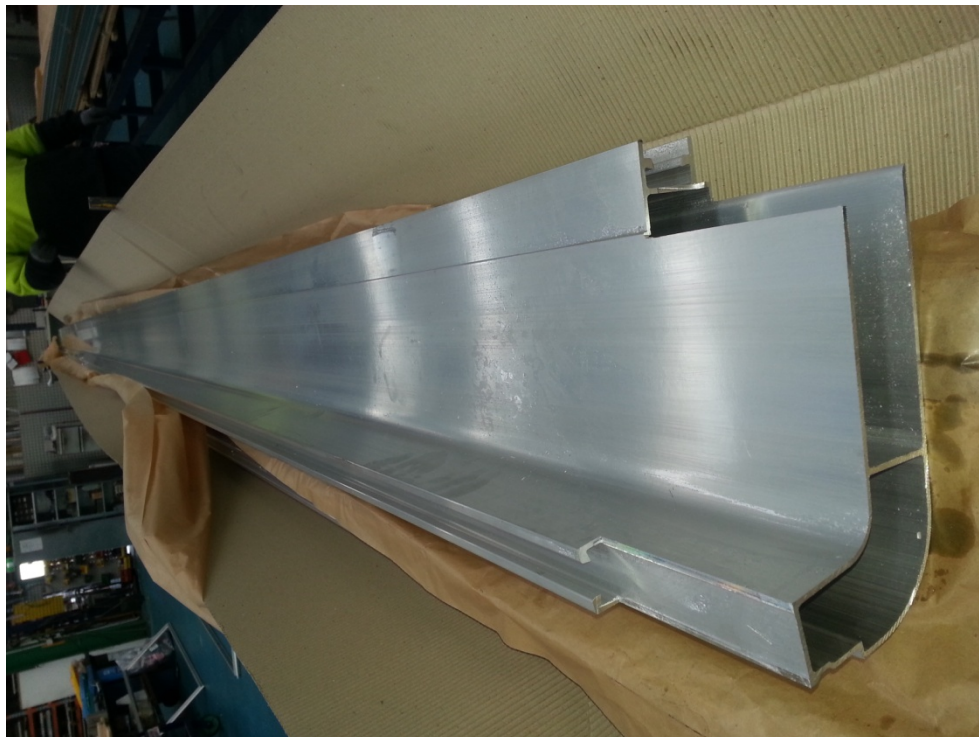
1. Aluminium extrusions

Aluminium can be extruded through a die into a wide variety of shapes. Capral holds more than 20,000 dies—from simple angles to complex hollow profiles. Examples of basic extrusions that are raw materials for downstream manufacturing are highlighted in Capral's Aluminium Extrusion Catalogue at Attachment A.

2. Aluminium extrusions with minor working

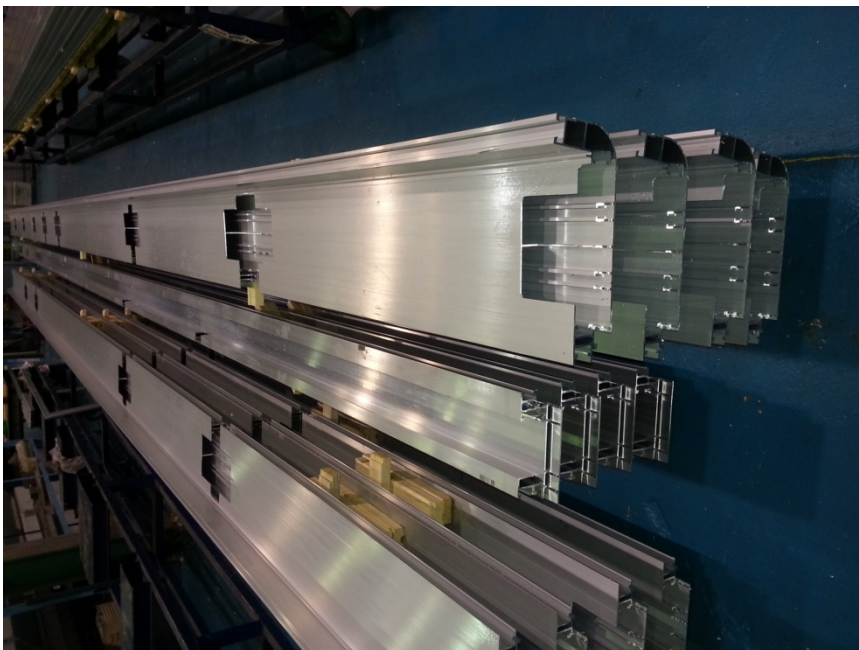
Aluminium extrusions can be precision cut, machined, punched or drilled by the extruder. The following are examples of extrusions produced with such workings.

Application: Transport – Cantrail



Non-Confidential – For Public Record

Application: Transport – Offside, nearside and main beam cantrails



Application: Transport – Air-conditioning duct



3. Aluminium extrusions that are parts intended for use in intermediate or finished products

Aluminium extrusions can be used as parts in the production of intermediate or finished products. These extrusions often incorporate minor working and would also fall into the above category, however this 'parts' category highlights that goods that do not necessarily look like standard extrusions are in fact goods subject to the notices. The following are examples of extrusions that are parts for use in the manufacture of other products.

Non-Confidential – For Public Record

Application: Curtain wall bracket



Application Transport – Truck component



Non-Confidential – For Public Record

Application Transport – Truck hinge



Application Transport – Truck hinge

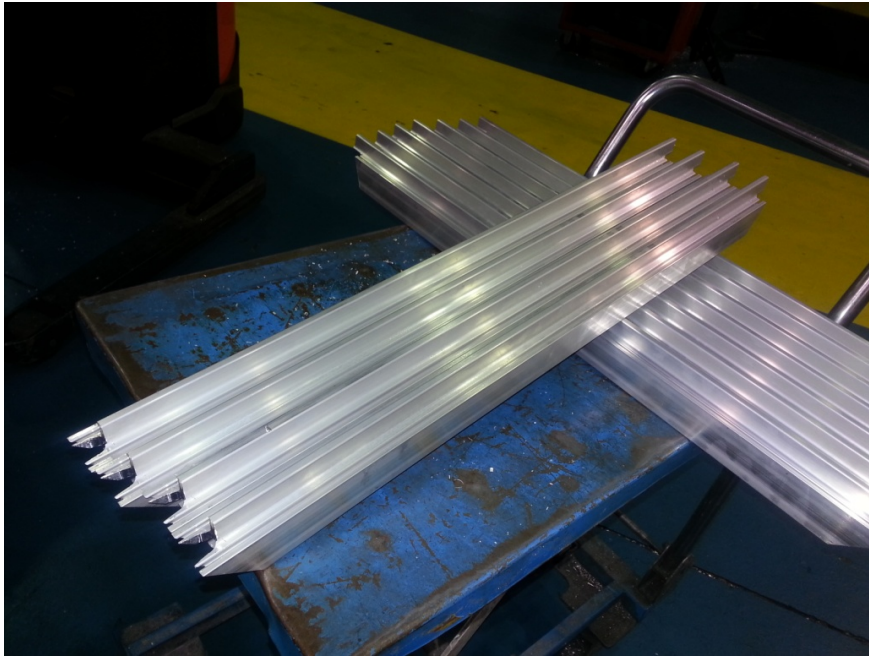


4. Aluminium extrusions that are themselves finished products

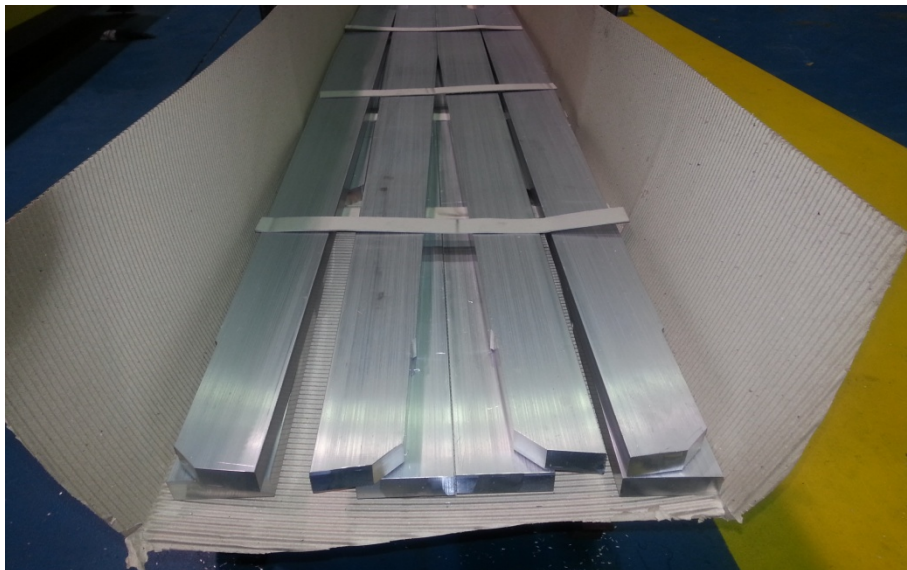
Aluminium extrusions can themselves be finished products despite the fact that they are basically just extrusions. The following are examples of extrusions that could be described as finished products.

Non-Confidential – For Public Record

Application: Gable upright



Application: Transport – Roll-over bar



Non-Confidential – For Public Record

Application: Transport – Roll-over bar



Goods not covered by the notices

5. Unassembled products containing aluminium extrusions, eg kits

Customs excluded unassembled products/kits from the notices and stated that in order to qualify for this exclusion imports must, at the time of import, comprise all necessary parts to assemble finished goods.² Capral believes that there has been some abuse of this exclusion, whereby some of the other parts necessary to fabricate a finished product (eg fasteners) are included in a shipment of extrusions, but in reality other materials and additional work (eg cutting and finishing) are required post-importation in order to produce the finished good. In these cases the extrusions are covered by the notices and duties should apply.

The following is an example of a product that Capral considers would satisfy, using Customs' original definition/interpretation of the goods under consideration, the definition of an unassembled product/kit.

² Customs Report No. 148, p.20 at 3.4.3

Non-Confidential – For Public Record

Fence kits

Kit In A Box Australia Pty Ltd

[Welcome Page](#)
[Contact Us](#)
[Pool Fencing](#)
[Panel Gates](#)
[Pool Posts](#)
[Panel Brackets](#)
[Diy Bools](#)
[Diy Panel Brackets](#)
[Diy Delivery Costs](#)
[Product Specs](#)
[Diy Panel Solutions](#)
[About Us](#)
[Inquiry Form](#)
[Wholesale Sales](#)
[Location Map](#)

DIY pool fencing in a box "Flat Pack"
sales@kitinabox.com.au

[Product Search](#) | [Product List](#) | [View basket](#)


[Click to view details](#)

Product Name	: Panel Flat Top - Black
Product ID	: PanelFlat
Product Price	: AUD 79.00
Quantity	: <input type="text"/> each
Product Weight	: 7 kg

Panel Flat Top Black Satin
2350 x 1200mm high (Flat Pack)

[Add to Cart](#)


[Click to view details](#)

Product Name	: Combo A type - Black
Product ID	: combo-a
Product Price	: AUD 99.50
Quantity	: <input type="text"/> each
Product Weight	: 10 kg

Combo A = 1 x 2350 x 1200mm high (Flat Pack)
panel \$59.00, 1 x 1800mm post+cap \$28.50 and 4 shrouds+screws \$12.00 in Black Satin

[Add to Cart](#)



Panel Flat Top in Black Satin. 2350 long x 1200mm high (Flat Pack) Top & Bottom rail 38x25mm, tube is 19mm wide 68mm apart.

You may cut panels to any size under 2350mm you want easily using a hacksaw.

Note: This panel is supplied in Flat Pack and needs assembly, as shown above.

Source: <http://kitinabox.com.au/>

6. Intermediate or partly assembled products containing aluminium extrusions

The most common type of intermediate or partly assembled product likely to be imported would be a frame to which other materials are attached and finishing work undertaken post-importation. The following is an example of such a product.

Curtain wall frame



7. Fully assembled finished products containing aluminium extrusions

The most common type of fully assembled finished products likely to be imported would be fabricated products incorporating aluminium extrusions and flat glass such as curtain walls, windows, doors and shower screens. The following are examples of such products.

Glazed curtain wall



Non-Confidential – For Public Record

Windows and doors



Source: <http://www.stegbar.com.au/Products/Showerscreens/Framed-Showerscreens>

Shower screen



Source: <http://www.stegbar.com.au/Products/Showerscreens/Framed-Showerscreens>