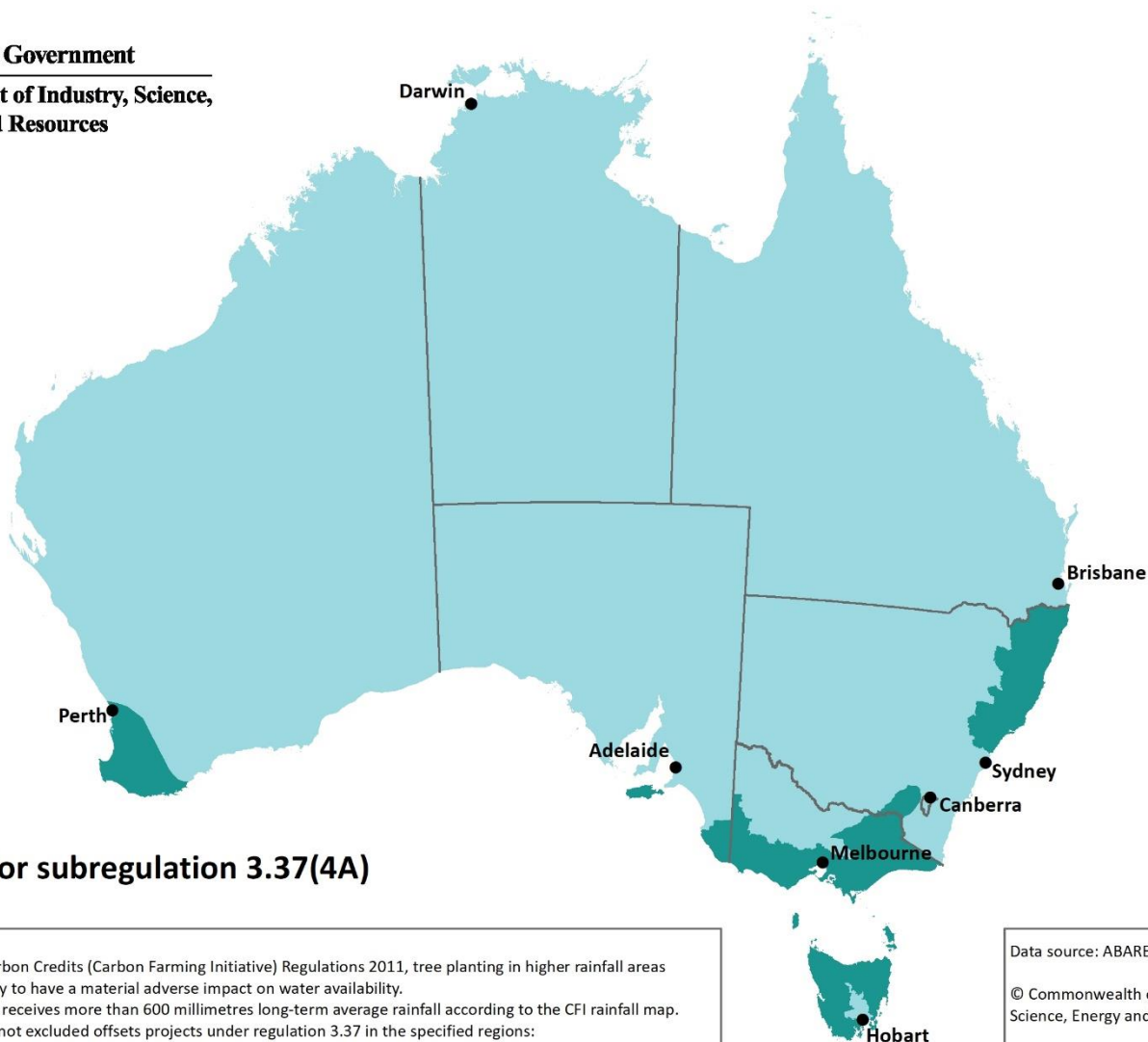




Australian Government

**Department of Industry, Science,
Energy and Resources**



Specified regions for subregulation 3.37(4A)

Specified regions

For subregulation 3.37(4A) of the Carbon Credits (Carbon Farming Initiative) Regulations 2011, tree planting in higher rainfall areas within the specified regions is unlikely to have a material adverse impact on water availability.

A 'higher rainfall area' is an area that receives more than 600 millimetres long-term average rainfall according to the CFI rainfall map.

The following proposed projects are not excluded offsets projects under regulation 3.37 in the specified regions:

- * plantation forestry
- * farm forestry
- * all other specified tree planting projects.

For proposed projects outside the specified regions, see regulation 3.37 for other options to participate in the Emissions Reduction Fund, and not be excluded offsets projects. See the specified regions and CFI rainfall map data layers on the data.gov.au website.

0 500 kms
Lambert Conformal Conic Projection

Data source: ABARES 2020, DAWE 2021

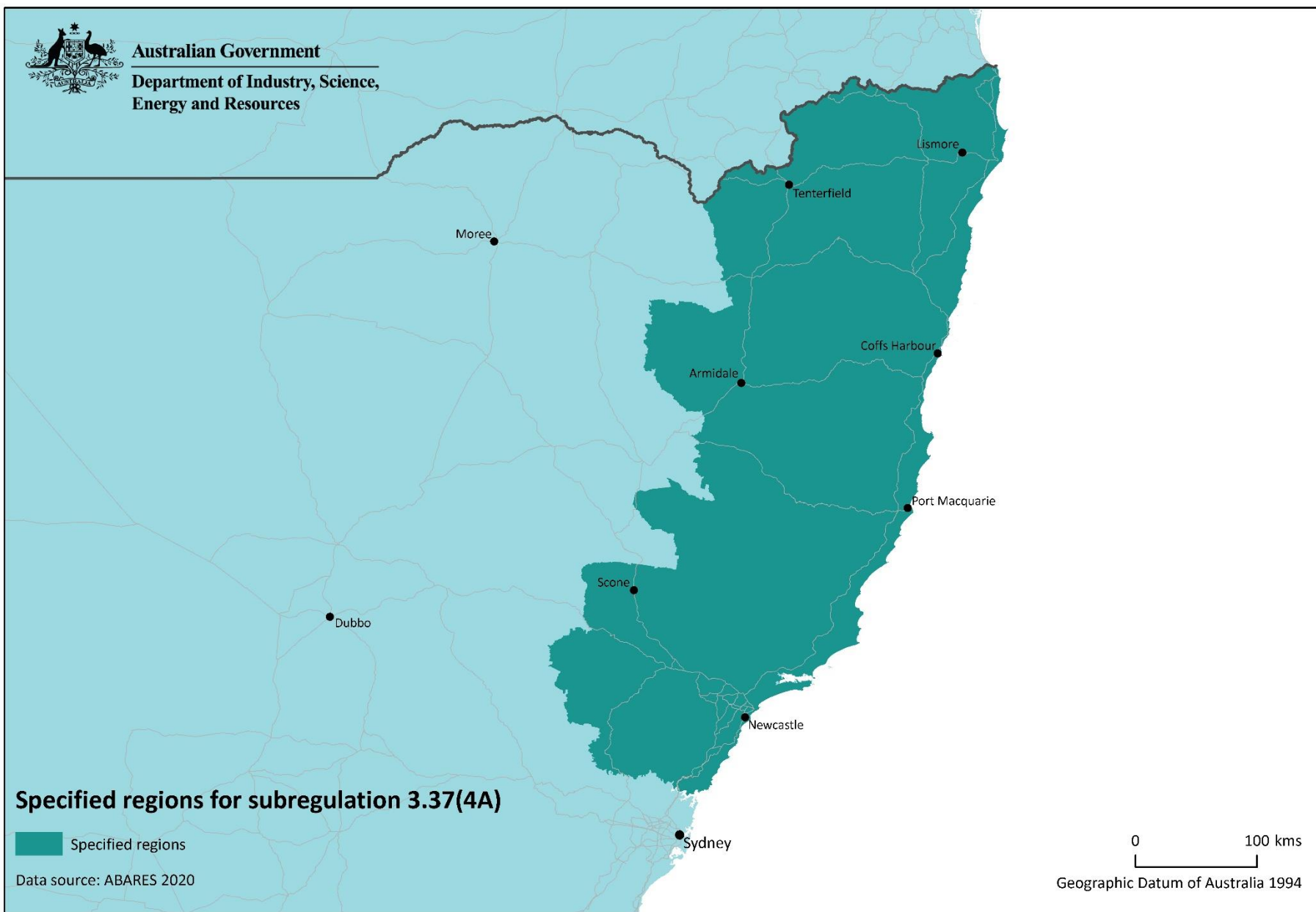
© Commonwealth of Australia (Department of Industry, Science, Energy and Resources) 2021

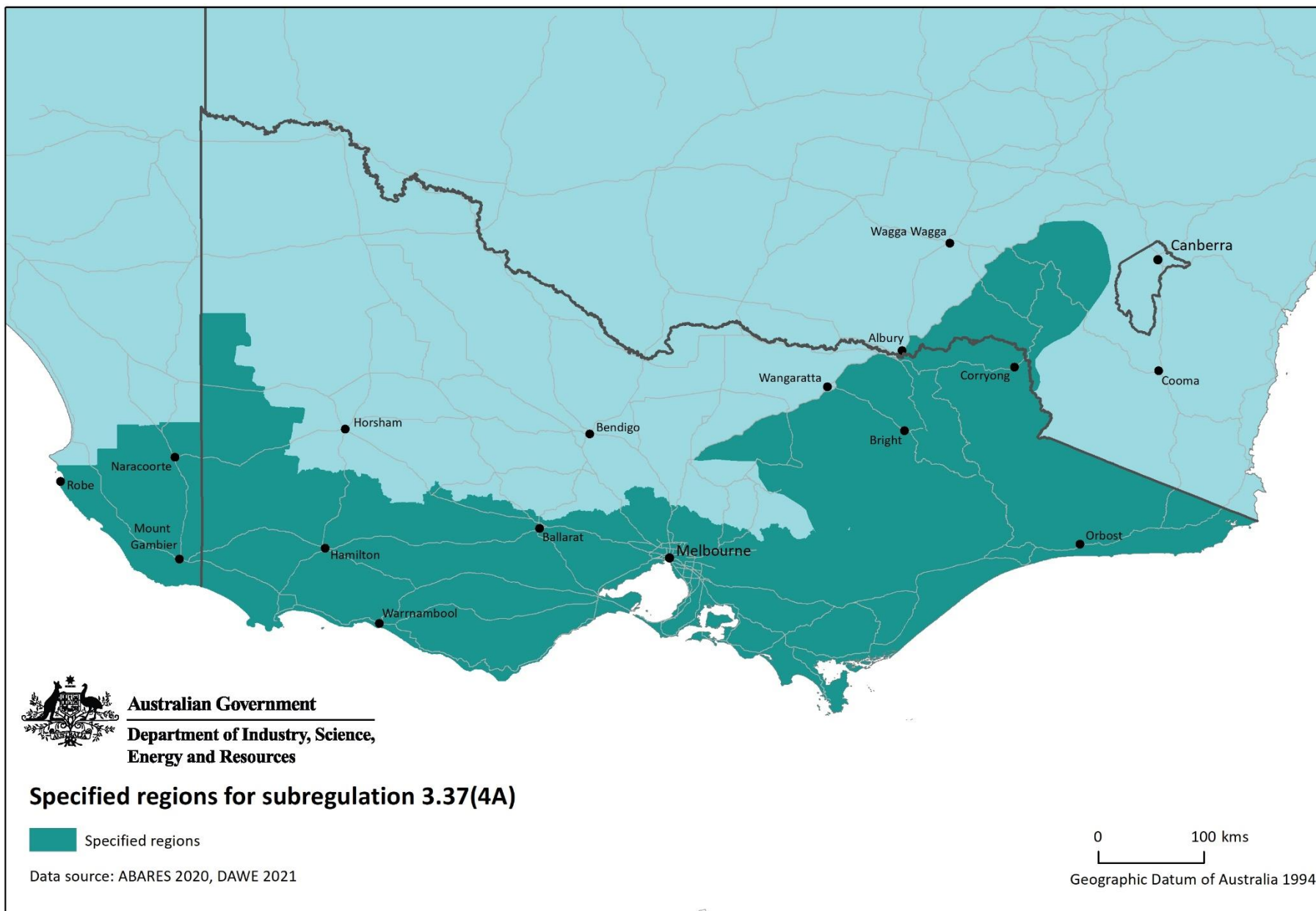
With the exception of the Commonwealth Coat of Arms and where otherwise noted, this product is provided under a Creative Commons Attribution 4.0 International Licence

Map can be downloaded from industry.gov.au



Australian Government
Department of Industry, Science,
Energy and Resources







Australian Government

Department of Industry, Science,
Energy and Resources



Specified regions for subregulation 3.37(4A)

 Specified regions

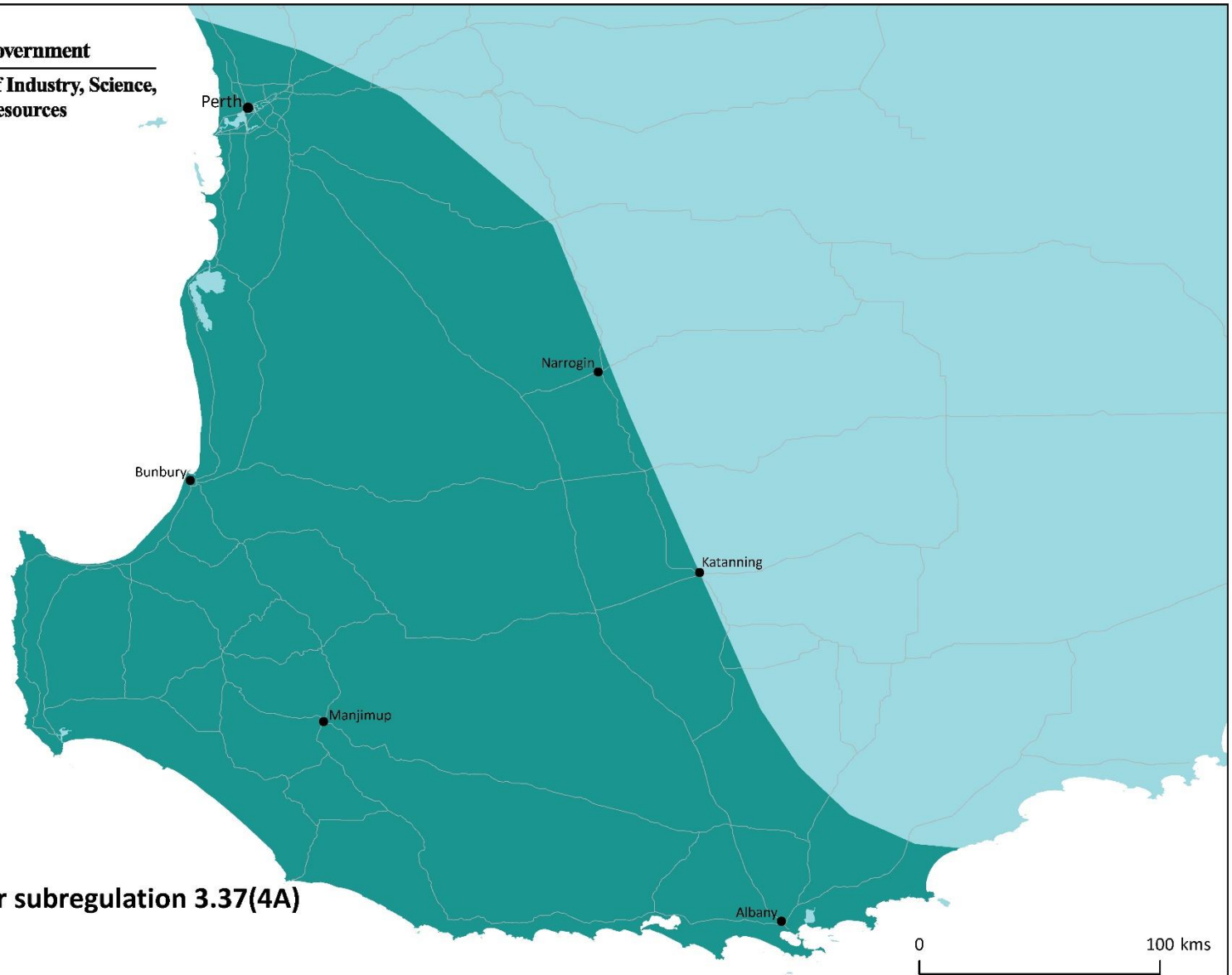
Data source: DAWE 2021

0 50 kms

Geographic Datum of Australia 1994



Australian Government
Department of Industry, Science,
Energy and Resources



Specified regions for subregulation 3.37(4A)

 Specified regions

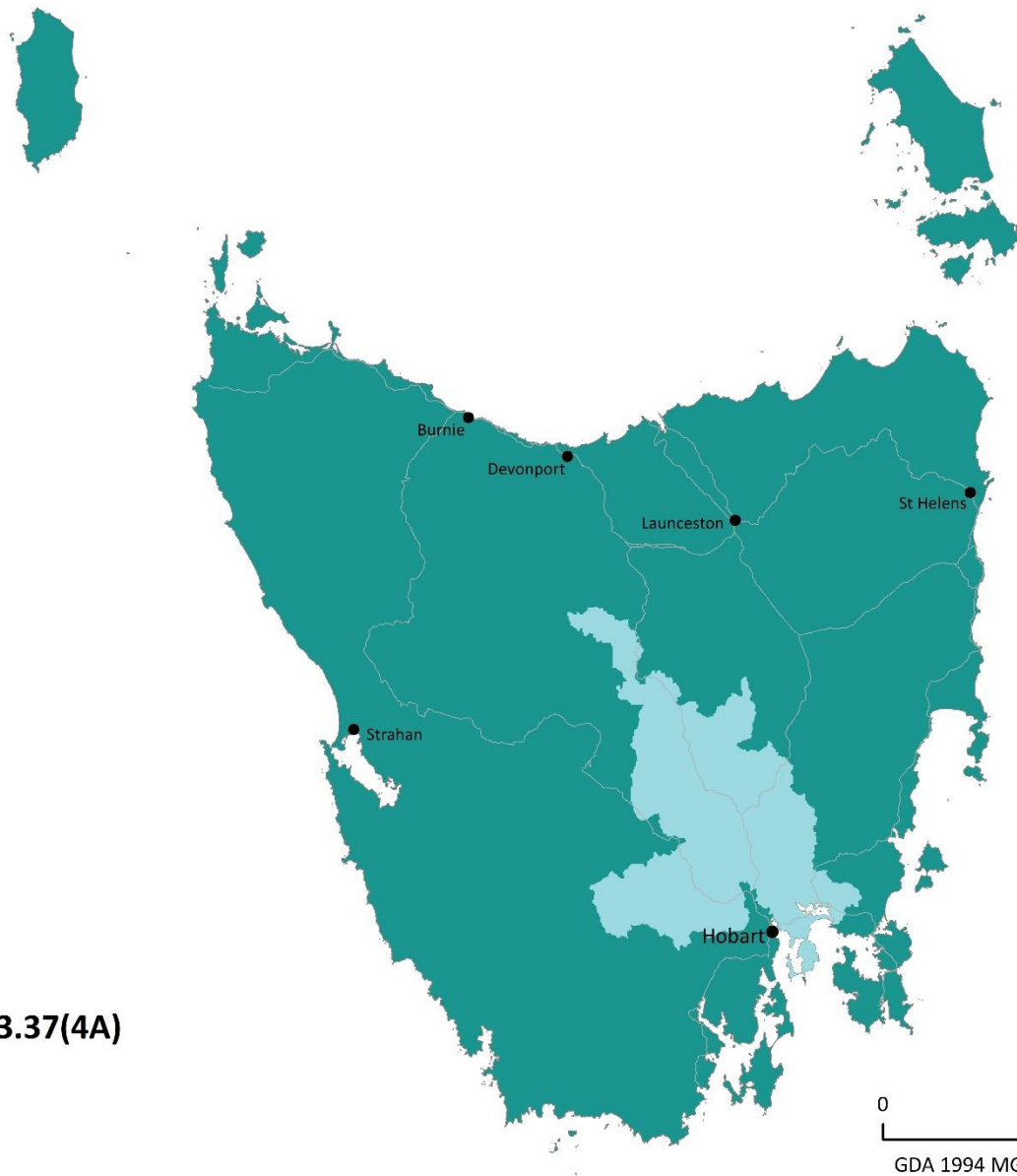
Data source: ABARES 2020

0 100 kms
Geographic Datum of Australia 1994



Australian Government

**Department of Industry, Science,
Energy and Resources**



Specified regions for subregulation 3.37(4A)

 Specified regions

Data source: ABARES 2020, DAWE 2021